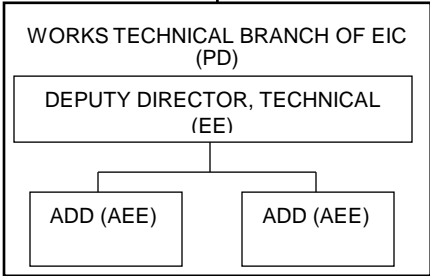


DEPARTMENT OF WATER RESOURCES

ENGINEER - IN - CHIEF, PLANING & DESIGN
BHUBANESWAR

ASST. TO EIC (P&D),
(SE)



CE,
QUALITY
ASSURANC
E

CE,
PLANING

CE, SURVEY &
INVESTIGATION

CE, ISWI

CE,
DRAINAGE

CE, MINOR
IRRIGATION

CE, GROUND
WATER

CE, MEGALIFT

CE, WATER
SERVICES

CE, DESIGN

CE, DAM SAFETY