



# Flood Bulletin, 2023

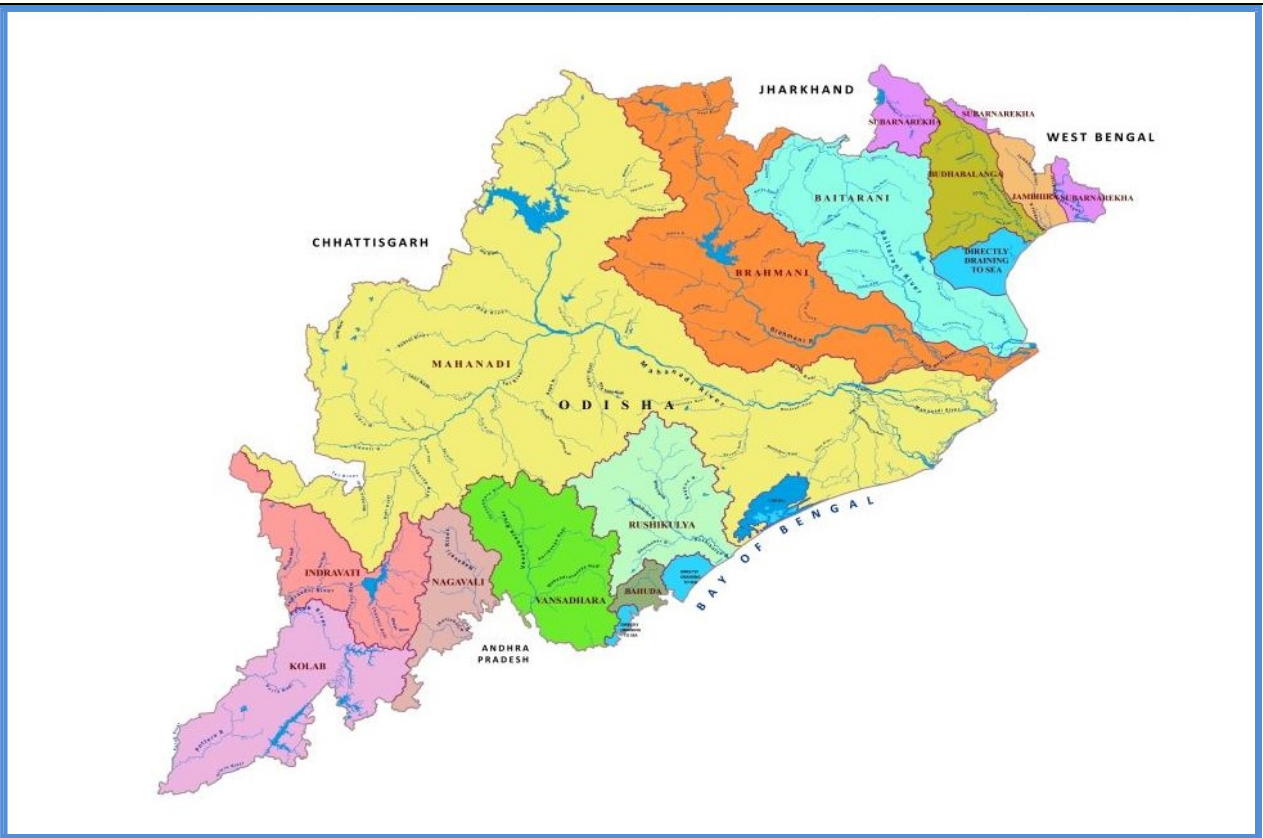
Government of Odisha

## Department of Water Resources

Volume No.87

Date: 26.08.2023

Time: 14:00Hr



### Contents

- Status of River Gauge
- Status of Reservoirs
- IMD Weather Bulletin
- River Discharge
- Rainfall Situation
- IMD Forecast

### Flood Cell

Office of the Engineer-in-Chief, Water Resources, Odisha  
Secha Sadan, Bhubaneswar  
Tel:0674-2395951,2395953e-Mail:[floodcelleicwr@gmail.com](mailto:floodcelleicwr@gmail.com)  
url: [dowr.odisha.gov.in](http://dowr.odisha.gov.in) & [dowrodisha.gov.in](http://dowrodisha.gov.in)

## Status of Gauge (in m)

Name of River	Gauge Site	Danger Level (DL)	Warning Level	Time (Hrs)	Present Level	Trend	(wrt DL)	Highest Recorded Level	
								Level	Date
Mahanadi	Khairmal	109.0	108.0	12:00	101.72	S	-7.28	108.31	19.09.08
	Tikarpara	-	-	12:00	57.45	S	-	74.98	30.08.82
	Naraj (IB)	26.41	25.41	12:00	22.49	S	-3.92	27.60	31.08.82
Kusabhadra	Nimapara	10.76	9.85	12:00	3.58	S	-7.18	11.60	31.08.82
Devi	Alipingala	11.76	10.85	12:00	3.08	F	-8.68	13.05	20.09.08
Brahmani	Panposh	178.42	177.51	12:00	172.81	R	-5.61	181.44	24.09.11
	Rengali	88.0	-	12:00	78.09	S	-9.91	92.25	18.08.75
	Talcher	62.91	-	12:00	54.83	F	-8.08	65.53	19.08.75
	Jenapur	23.0	22.0	12:00	19.51	S	-3.49	24.78	20.08.75
	Indupur	8.23	-	12:00	4.31	S	-3.92	-	-
Baitarani	Champua	376.41	375.33	12:00	372.0	F	-4.41	379.06	23.09.11
	Swampatna	311.1	-	12:00	306.38	S	-4.72	315.66	14.08.75
	Anandapur	38.36	37.44	12:00	34.72	R	-3.64	41.80	19.08.75
	Akhuapada	18.33	17.83	12:00	17.21	F	-1.12	21.95	16.08.60
Budhabalanga	Chandanpur	-	-	12:00	81.64	S	-	85.80	09.11.95
	Baripada	30.92	29.7	12:00	21.96	S	-8.96	37.20	12.10.73
	Balimundali	-	-	12:00	36.70	S	-	42.20	1995
	NH5-Govindapur	8.13	7.21	12:00	2.62	F	-5.51	9.67	12.10.73
Subarnarekha	Jamshedpur	123.5	122.5	12:00	117.36	F	-6.14	129.82	12.10.73
	Jamsolaghat	49.16	48.32	12:00	45.46	S	-3.7	56.91	03.09.78
	Rajghat	10.36	9.45	12:00	5.46	S	-4.9	12.69	19.06.08
Jalaka	Mathani Road Bridge	6.50	6.0	12:00	5.83	S	-0.67	7.31	22.09.21
Rushikulya	Sorada	81.99	80.99	12:00	77.65	F	-4.34	83.21	04.11.90
	Madhabarida	60.65	-	12:00	56.24	S	-4.41	61.44	18.10.99
	Purusottampur	16.84	15.84	12:00	12.35	S	-4.49	19.60	04.11.90
Vansadhara	Gudari	-	-	12:00	114.26	S	-	121.82	17.09.80
	Gunupur	84.0	83.0	12:00	80.93	S	-3.07	88.75	17.09.80
	Kashinagar	54.6	53.6	12:00	52.88	R	-1.72	58.93	18.09.80

## Status of Major Reservoirs

Name of the Reservoir	Dead Storage Level	FRL/ MWL	Reservoir Level	LS Available/ Live Storage Capacity (%)	Last Year (2022) Live Storage Avl (%) / R.L	Inflow	Total Outflow	Gates Open (Nos)/ Trend
<b>1.Hirakud 12:00Hr</b>	590.0 ft	630.0ft	621.12 ft	<u>3195.0 Mcum</u> 4822.83Mcum (66.2%)	<u>76.7%</u> 624.3 ft	56,825.0 Cusec	34,730.0 Cusec	0/98 Rising
<b>2.Rengali 12:00Hr</b>	109.72 m	<u>123.5 m</u> 125.4 m	117.30 m.	<u>148171.0 Ham</u> 341371.0 Ham (43.4%)	<u>84.4%</u> 121.9 m	675.07 Cumec	658.35 Cumec	0/27 Rising
<b>3.U. Indravati 09:00Hr</b>	625.0 m	<u>642 m</u> 643 m	631.42 m.	<u>44356.0 Ham</u> 148550.0 Ham (29.9%)	<u>86.5%</u> 640.5 m	126.22 Cumec	53.26 Cumec	0/12 Rising
<b>4.UpperKolab 08:00Hr</b>	844.0 m	858.0 m	851.53 m.	<u>391.24 Mcum</u> 935.0 Mcum (41.8%)	<u>47.2%</u> 852.2 m	47.99 Cumec	39.3 Cumec	0/11 Rising
<b>5.Balimela 08:00Hr</b>	1440.0 ft	<u>1516 ft</u> 1518 ft	1471.90 ft	<u>80253.0 Ham</u> 267600.0 Ham (30.0%)	<u>31.3%</u> 1473.0 ft	7686.0 Cusec	6413.24 Cusec	0/12 Rising
<b>6.Machhkund (Jalaput) 08:00Hr</b>	2685.0 ft	2750.0 ft	2713.15 ft	<u>21432.0Ham</u> 89254.7 Ham (24.0%)	<u>37.2%</u> 2722.4 ft	1853.0 Cusec	1810.0 Cusec	2/12 Rising
<b>7.Salandi 08:00Hr</b>	50.24 m	<u>82.3 m</u> 83.21m	77.39 m.	<u>40432.0 Ham</u> 55650.0 Ham (72.7%)	<u>79.2%</u> 78.6 m	45.30 Cumec	46.34 Cumec	2/11 Steady
<b>8.LowerIndra 08:00Hr</b>	251.0 m	<u>265 m</u> 265 m	262.84 m.	<u>24821.80 Ham</u> 31425.2Ham (79.0%)	<u>77.4%</u> 262.7 m	23.81 Cumec	31.82 Cumec	0/9 Falling

**Note:** Total Outflow consists of Irrigation, Spillway, Sluice, Power generation, Industrial & other supply and Evaporation loss \*U Indravati-7 gates, Muran Dam-5 gates (Total-12 Nos)

## Average Inflow into & Outflow from Reservoir

Reservoir	Inflow	Outflow	Observation Period
<b>Hirakud</b>	63,689 Cusec	33,312 Cusec	During last 24 Hrs ending 08:00Hrs of 26.08.2023
<b>Rengali</b>	636.35 Cumec	726.63 Cumec	During last 24 Hrs ending 06:00Hrs of 26.08.2023

## Travel Time of Flow in Mahanadi River

<b>Hirakud Dam</b>	<b>115 km</b>	<b>Khairmal</b>	<b>106 km</b>	<b>Barmul</b>	<b>95 km</b>	<b>Mundali</b>
	12-18 Hrs		12-16 Hrs		12-16 Hrs	

## River Discharge

Name of the River	G&D Site	Time (Hrs)	Discharge (cusec)
<b>Mahanadi (Up Stream Hirakud)</b>	Champa	12:00	19,960
	Tarapur	12:00	BG
	Saradihi	12:00	39,095
	Kalma	09:00	NR
	Deogaon	12:00	4,270
<b>Mahanadi (Down Stream Hirakud)</b>	Khairmal	12:00	66,000
	Barmul	12:00	76,000
	Mundali	12:00	60,400
<b>Tel</b>	Patharla	12:00	37,743
<b>Baitarani</b>	NH-5 Akhuapada	08:00	NR
<b>Brahmani</b>	Pankapal	08:00	36451
<b>Subarnarekha</b>	Rajghat	08:00	19,142
<b>Rushikulya</b>	Purusottampur	09:00	2812

## Status of Medium Reservoir

Sl.	Name of Dam / Reservoir	Available Live Storage (%) (Gates Open)	Sl.	Name of Dam / Reservoir	Available Live Storage (%) (Gates Open)	Sl.	Name of Dam / Reservoir	Available Live Storage (%) (Gates Open)
1.	Badanalla	46.6%	17.	Harabhangi	24.4%	33.	Ret	89.6%
2.	Baghalati	57.3%	18.	Harihorjore	97.0%	34.	Rukura	72.4%
3.	Baghua	28.4%	19.	Jambira*	3.4%	35.	Saipala	52.9%
4.	Bankabahal	70.9%	20.	Jharbandh*	67.1%	36.	Salia*	50.1%
5.	Bhanjanagar	72.5%	21.	Kalo	83.9%	37.	Sapua*	65.0%
6.	Bhaskel*	36.1%	22.	Kanjhari	83.2%	38.	Saraphgarh	47.8%
7.	Budhabudhiani	65.3%	23.	Kansabahal	77.9%	39.	Satiguda*	90.4%
8.	Dadarghati*	45.0%	24.	Khadkhai	67.5%	40.	Soroda*	39.3%
9.	Daha	24.4%	25.	Kuanria	49.3%	41.	Sunder	50.9%
10.	Deo	89.0% (4)	26.	Mandira	30.4% (5)	42.	Sunei	75.7%
11.	Derjang	77.5%	27.	Manjore	75.2%	43.	Talsara	83.7% (2)
12.	Dhanei*	42.5%	28.	Nesa*	85.5%	44.	Telengiri	69.3%
13.	Dumberbahal	83.3%	29.	Pilasalki*	100.0%	45.	Titlagarh	37.8%
14.	Ghodahada	41.6%	30.	Pitamahal*	100.0%	46.	Upper Jonk	77.5%
15.	Gohira	84.7%	31.	Ramial	77.6%	47.	Upper Suktel*	69.4%
16.	Haladia	18.7%	32.	Remal	83.2%			

Note: \*Un-gated Dams (13 Nos.)

Above 75%   
 Above 90%

**Medium Reservoir: 47 Nos**

(Gated-32, Un-Gated-13),

Below 50%: 15 Nos., Between 50% to 75%: 13 Nos., Above 75%:19 Nos.

## AVAILABLE LIVE STORAGE CAPACITY OF MAJOR & MEDIUM RESERVOIRS (26.08.2023)

**No. of Gates Open/Total Gates:**

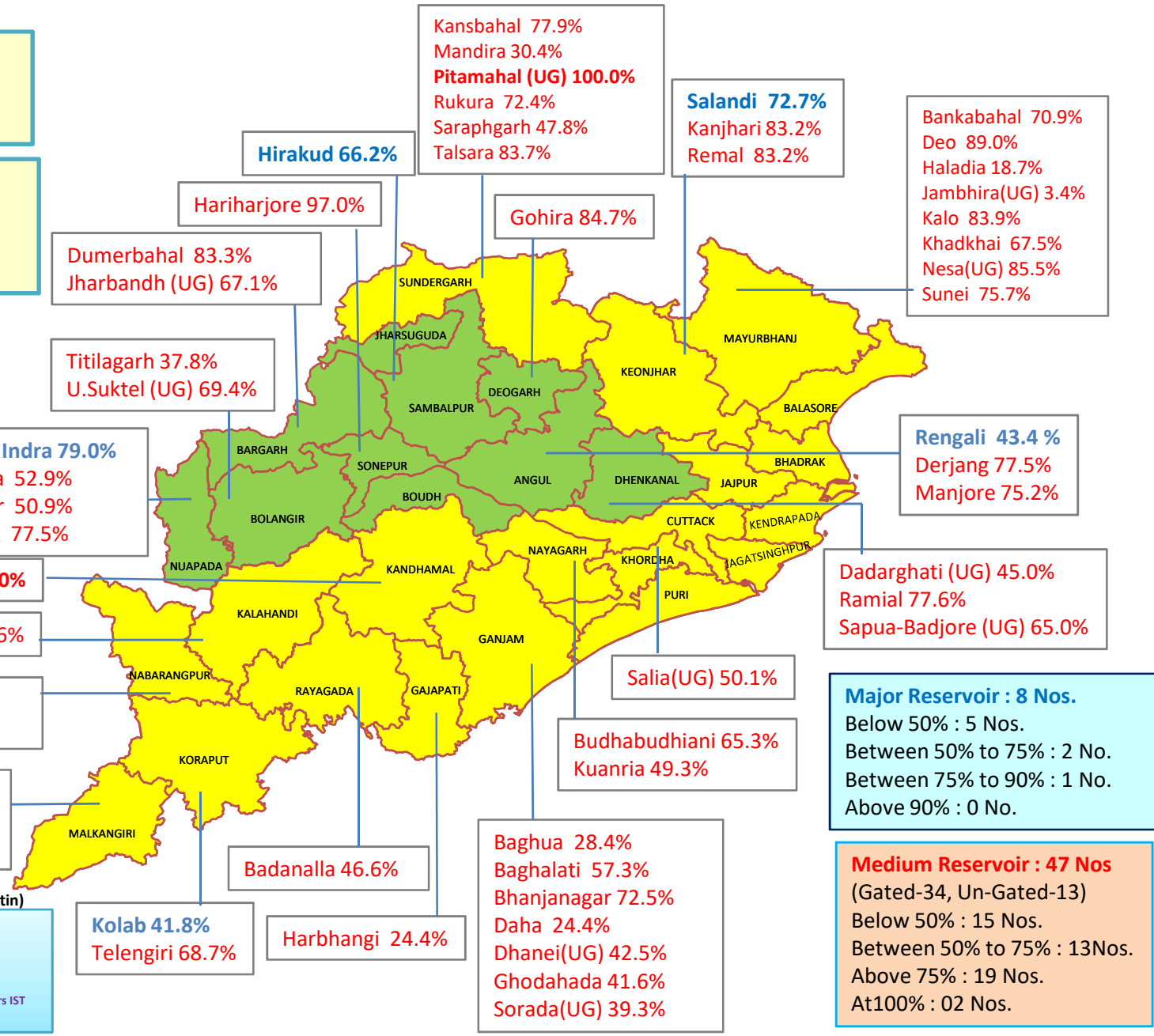
**Major**

1. Jalaput – 02/12
2. Salandi – 02/ 11

**No. of Gates Open/Total Gates:**

**Medium**

1. Deo- 04/07
2. Mandira – 05/13
3. Talasara-02/06



Source IMD-26.08.23 ( Mid Day Bulletin)

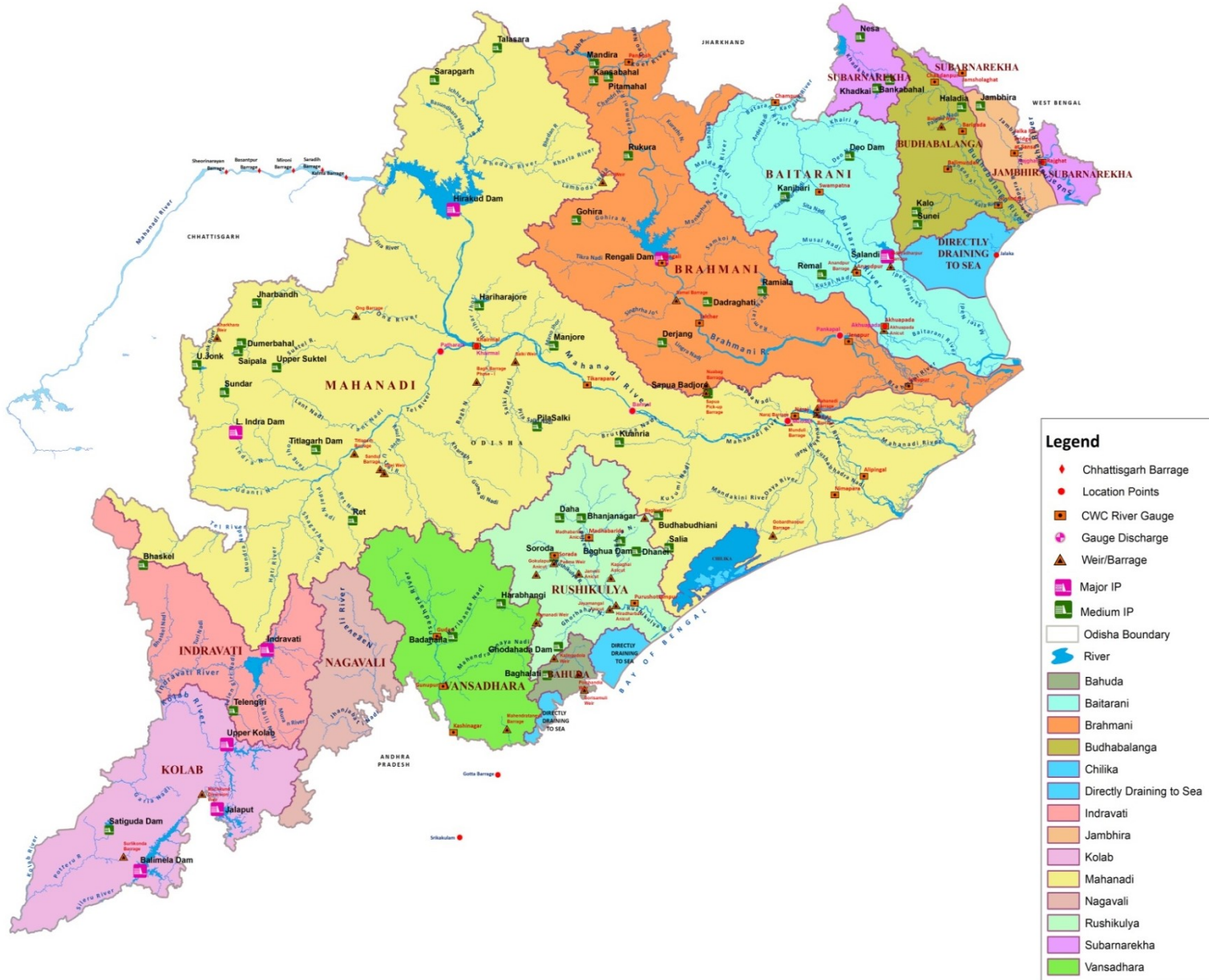
- No Warning
- Heavy Rainfall
- Very Heavy Rainfall
- Extremely Heavy Rainfall
- Thunderstorm with Lightning & Rainfall

(Valid from 13.00 hrs of 26.08.2023 to 08:30 hrs IST of 27.08.2023)

**Major Reservoir : 8 Nos.**  
 Below 50% : 5 Nos.  
 Between 50% to 75% : 2 No.  
 Between 75% to 90% : 1 No.  
 Above 90% : 0 No.

**Medium Reservoir : 47 Nos**  
 (Gated-34, Un-Gated-13)  
 Below 50% : 15 Nos.  
 Between 50% to 75% : 13Nos.  
 Above 75% : 19 Nos.  
 At100% : 02 Nos.

# MAJOR & MEDIUM RESERVOIRS , G & D SITES IN ODISHA



भारत सरकार

□□□□ □□□□ □□□□□□□□  
□□□□□

(पृथ्वी विज्ञान मंत्रालय)

पता : मौसम विज्ञान केन्द्र, भुवनेश्वर

फोन न. २५९६०१० &

२५९६११६

फैक्स न. २५९६०१० &

२५९६००२



GOVERNMENT OF INDIA

INDIA METEOROLOGICAL DEPARTMENT

(Ministry of Earth Sciences)

METEOROLOGICAL CENTRE

BIJUPATNAIK AIRPORT

BHUBANESWAR-751020

TELE: 2596010 & 2596116

FAX : 2596010 & 2596093

E-MAIL : imdbbsr@ori.nic.in

Ref No: FM/HM Bulletin/87

Dated: 26/08/2023

Time of Issue: 1300 hrs IST

## **HYDROMET BULLETIN**

### 1) **Synoptic Situation**

The western end of Monsoon Trough continues to run along the foothills of the Himalayas and its eastern end at mean sea level now passes through Shahjahanpur, Muzaffarpur, Purnia, Bankura and thence southeastwards to northeast Bay of Bengal.

A trough runs from Sub-Himalayan West Bengal to Northeast Bay of Bengal between 4.5 & 5.8 km above mean sea level.

### a) **River Sub-basin-wise Quantitative Precipitation Forecast (QPF)**

S. No.	Basin Name	Sub-basin Name	QPF (mm)						
			Day-1 (26.08.23)	Day-2 (27.08.23)	Day-3 (28.08.23)	Day-4 (29.08.23)	Day-5 (30.08.23)	Day-6 (31.08.23)	Day-7 (01.09.23 )
1	BAITRANI	BT	0.1-10	0.1-10	0.1-10	0.1-10	0.1-10	11-25	11-25
2	LOWER BRAHMANI	LB	0.1-10	0.1-10	0.1-10	0.1-10	0.1-10	11-25	11-25
3	UPPER BRAHMANI	UB	0.1-10	0.1-10	0.1-10	0.1-10	11-25	11-25	11-25
4	BHURABALANG	BB	0.1-10	0.1-10	0.1-10	0.1-10	0.1-10	11-25	11-25
5	LOWER MAHANADI	LM	0.1-10	0.1-10	0.1-10	0.1-10	0.1-10	0.1-10	11-25
6	NAGAVALI	NV	11-25	11-25	0.1-10	0.1-10	0.1-10	0.1-10	11-25
7	RUSHIKULIYA	RK	0.1-10	0.1-10	0.1-10	0.1-10	0.1-10	11-25	11-25
8	SUBERNAREKHA	SR	11-25	0.1-10	0.1-10	0.1-10	0.1-10	0.1-10	0.1-10
9	UPPER MAHANADI	UM	0.1-10	0.1-10	0.1-10	0.1-10	0.1-10	0.1-10	0.1-10
10	VAMSDHARA	VD	11-25	0.1-10	0.1-10	0.1-10	0.1-10	0.1-10	0.1-10

PF categories (mm)	0	0.1-10	11-25	26-37	38-50	51-75	76-100	>100
--------------------	---	--------	-------	-------	-------	-------	--------	------



## 2b) River Sub-basin-wise Intensity and Distribution of QPF

S. No	Basin Name	Sub-basin Name	Intensity (I) and Spatial Distribution (D)													
			Day-1 (26.08.23)		Day-2 (27.08.23)		Day-3 (28.08.23)		Day-4 (29.08.23)		Day-5 (30.08.23)		Day-6 (31.08.23)		Day-7 (01.09.23)	
			I	D	I	D	I	D	I	D	I	D	I	D	I	D
1	BAITRANI	BT	L	SCT	L	SCT	L	SCT	L	SCT	L	SCT	M	FWS	M	FWS
2	LOWER BRAHMANI	LB	L	SCT	L	SCT	L	SCT	L	ISOL	L	SCT	M	FWS	M	FWS
3	UPPER BRAHMANI	UB	L	SCT	L	SCT	L	SCT	L	ISOL	M	SCT	M	FWS	M	FWS
4	BHURABALANG	BB	L	SCT	L	SCT	L	SCT	L	SCT	L	ISOL	M	FWS	M	FWS
5	LOWER MAHANADI	LM	L	SCT	L	SCT	L	ISOL	L	ISOL	L	SCT	L	SCT	M	FWS
6	NAGAVALI	NV	M	FWS	M	FWS	L	SCT	L	SCT	L	ISOL	L	SCT	M	FWS
7	RUSHIKULIYA	RK	L	SCT	L	SCT	L	SCT	L	SCT	L	ISOL	M	FWS	M	FWS
8	SUBERNAREKHA	SR	M	FWS	L	SCT	L	SCT	L	SCT	L	SCT	L	SCT	L	FWS
9	UPPER MAHANADI	UM	L	ISOL	L	ISOL	L	ISOL	L	ISOL	L	SCT	L	SCT	L	SCT
10	VAMSDHARA	VD	M	FWS	L	SCT	L	SCT	L	SCT	L	ISOL	L	SCT	L	FWS

Spatial Distribution		
DRY	Dry	No station reported rainfall
ISOL	One or two places	25% or less number of stations recorded rainfall 2.5 mm
SCT	At a few places	26%-50% number of stations recorded rainfall 2.5 mm
FWS	At many places	51%-75% number of stations recorded rainfall 2.5 mm
WS	At most places	76%-100% number of stations recorded rainfall 2.5 mm

Intensity					
M.Dry	NIL	0 cm	VL	Very Light Rainfall	Trace
L	Light Rainfall	Upto 1 cm	M	Moderate Rainfall	2-6 cm
H	Heavy Rainfall	7-11 cm	VH	Very Heavy rainfall	12-20 cm
EH	Extremely Heavy Rainfall	21 cm or more			
ExH	Exceptionally Heavy Rainfall	When the amount is a value near about the highest recorded rainfall at or near the station for the month or season. However, this term will be used only when the actual rainfall amount exceeds 12 cm.			

### 3) River Sub-basin-wise Heavy Rainfall Warning

S. No	Basin Name	Sub-basin Name	Day-1 (26.08.23)		Day-2 (27.08.23)		Day-3 (28.08.23)		Day-4 (29.08.23)		Day-5 (30.08.23)		Day-6 (31.08.23)		Day-7 (01.09.23)	
			I	D	I	D	I	D	I	D	I	D	I	D	I	D
1	BAITRANI	BT	NIL	NIL	NIL	NIL	NIL	NIL	NIL	NIL	NIL	NIL	H	ISOL	H	ISOL
2	LOWER BRAHMANI	LB	NIL	NIL	NIL	NIL	NIL	NIL	NIL	NIL	NIL	NIL	H	ISOL	H	ISOL
3	UPPER BRAHMANI	UB	NIL	NIL	NIL	NIL	NIL	NIL	NIL	NIL	NIL	NIL	NIL	NIL	H	ISOL
4	BHURABALANG	BB	NIL	NIL	NIL	NIL	NIL	NIL	NIL	NIL	NIL	NIL	NIL	NIL	NIL	NIL
5	LOWER MAHANADI	LM	NIL	NIL	NIL	NIL	NIL	NIL	NIL	NIL	NIL	NIL	NIL	NIL	H	ISOL
6	NAGAVALI	NV	H	ISOL	NIL	NIL	NIL	NIL	NIL	NIL	NIL	NIL	NIL	NIL	NIL	NIL
7	RUSHIKULIYA	RK	NIL	NIL	NIL	NIL	NIL	NIL	NIL	NIL	NIL	NIL	NIL	NIL	NIL	NIL
8	SUBERNAREKHA	SR	NIL	NIL	NIL	NIL	NIL	NIL	NIL	NIL	NIL	NIL	NIL	NIL	NIL	NIL
9	UPPER MAHANADI	UM	NIL	NIL	NIL	NIL	NIL	NIL	NIL	NIL	NIL	NIL	NIL	NIL	NIL	NIL
10	VAMSDHARA	VD	NIL	NIL	NIL	NIL	NIL	NIL	NIL	NIL	NIL	NIL	NIL	NIL	NIL	NIL

Spatial Distribution			Intensity					
DRY	Dry	No station reported rainfall	M.Dry	NIL	0 cm	VL	Very Light Rainfall	Trace
ISOL	One or two places	25% or less number of stations recorded rainfall 2.5 mm	L	Light Rainfall	Upto 1 cm	M	Moderate Rainfall	2-6 cm
SCT	At a few places	26%-50% number of stations recorded rainfall 2.5 mm	H	Heavy Rainfall	7-11 cm	VH	Very Heavy rainfall	12-20 cm
FWS	At many places	51%-75% number of stations recorded rainfall 2.5 mm	EH	Extremely Heavy Rainfall	21 cm or more			
WS	At most places	76%-100% number of stations recorded rainfall 2.5 mm	ExH	Exceptionally Heavy Rainfall	When the amount is a value near about the highest recorded rainfall at or near the station for the month or season. However, this term will be used only when the actual rainfall amount exceeds 12 cm.			

4) River Sub-basin-wise Probabilistic QPF

Basin Name	Sub-basin Name	QPF Probability (%)																																													
		Day-1 (26.08.2023) (QPF categories)					Day-2 (27.08.2023) (QPF categories)					Day-3 (28.08.2023) (QPF categories)					Day-4 (29.08.2023) (QPF categories)					Day-5 (30.08.2023) (QPF categories)					Day-6 (31.08.2023) (QPF categories)					Day-7 (01.09.2023) (QPF categories)															
		0	0.1-10	11-25	26-50	51-100	>100	0	0.1-10	11-25	26-50	51-100	>100	0	0.1-10	11-25	26-50	51-100	>100	0	0.1-10	11-25	26-50	51-100	>100	0	0.1-10	11-25	26-50	51-100	>100	0	0.1-10	11-25	26-50	51-100	>100	0	0.1-10	11-25	26-50	51-100	>100				
BAITRANI	B T																																														
LOWER BRAHMANI	L B																																														
UPPER BRAHMANI	U B																																														
BHURABALANG	B B																																														
LOWER MAHANADI	L M																																														
NAGAVALI	N V																																														
RUSHIKULIYA	R K																																														
SUBERNAREKHA	S R																																														
UPPER MAHANADI	U M																																														
VAMSDHARA	V D																																														



**5) Station-wise significant rainfall recorded at 0830 hrs IST of today**

S. NO.	NAME OF SUB-BASIN	NAME OF STATION AND RAINFALL ( $\geq 44.6$ MM.)
4	NAGAVALI	Pusapatirega(60.8), ,Vizianagaram(53.2)
5	SUBERNAREKHA	ARKI(47)

**6) River Sub-basin-wise observed Average Areal Precipitation (AAP) of today**

S. No.	Basin Name	Sub-basin Name	AAP (mm)
1	BAITRANI	BT	4.1
2	LOWER BRAHMANI	LB	1.2
3	UPPER BRAHMANI	UB	3.5
4	BHURABALANG	BB	9.7
5	LOWER MAHANADI	LM	1.0
6	NAGAVALI	NV	17.9
7	RUSHIKULIYA	RK	1.2
8	SUBERNAREKHA	SR	12.6
9	UPPER MAHANADI	UM	1.8
10	VAMSDHARA	VD	9.7

RAINFALL FOR PAST 24 HRS ENDING AT 0830 HRS OF DATE

Date:-26.08.2023

SI No	Name of Stations	Rainfall (in mm)
UPPER MAHANADI		
1	AMBABHONA	0.0
2	ANDHIARKHOR	0.8
3	BAIKUNTHAPUR	0.0
4	BAMNIDIHI	0.0
5	BANGODAM	6.4
6	BARAGAON	0.0
7	BASANTAPUR	0.0
8	BORANDA	0.0
9	DEOGAON (IRRI)	5.0
10	DEOGAON (CWC)	0.0
11	DHARAMJAYGARH	0.0
12	GHATORA	0.0
13	HEMGIRI	8.4
14	JAMADARPALLI	0.0
15	JAMANKIRA	0.0
16	JHARSUGUDA (IMD)	1.4
17	KORBA	21.4
18	KUCHINDA	15.0
19	KURUBHATTA	0.0
20	KELO	4.0
21	MANENDRAGARH	0.0
22	MAHULPALI	1.4
23	NAWAPARA	0.0
24	LAIKERA	0.0
25	Gundardehi	0.0
26	Doundi	0.0
27	Gurur	0.0
28	DONDILOHARA	0.6
29	BALOD	0.0
30	PALLARI/PALARI	0.0
31	BALODA BAZAR	0.0
32	Kasdole	0.3
33	Bilaigarh	0.0
34	Bhatapara	0.0
35	Darbha	7.4
36	Saja	5.5
37	Berla	0.0
38	Nawagarh	2.0
39	Than Khamaria	6.5
40	BEMETARA	1.8
41	Masturi	0.0
42	Bilha	0.0
43	Kota	0.0
44	Takhatpur	0.0
45	BILASPUR	1.0
46	Kurud	0.0
47	Nagari	0.0
48	Magarlod	0.0
49	DHAMTARI	0.0
50	Patan	0.0
51	Dhamdha	0.0
52	DURG	0.0
53	DEOBHOG	0.0
54	GARIABUND	0.0
55	Chhura	0.0
56	Mainpur	0.0
57	Akaltara	0.0
58	Pamgarh	0.0
59	Baloda	4.6
60	Jaijaipur	0.0
61	Malkharoda	0.0
62	Dhabhara	0.0
63	SAKTI	1.9
64	JANJGIR	0.0
65	CHAMPA	2.2
66	Manora	0.4
67	Bagicha	0.0
68	Duldula	4.0
69	Kunkuri	0.4
70	Kansabel	0.0
71	Tapkara	0.0

SI No	Name of Stations	Rainfall (in mm)
UPPER MAHANADI		
72	PATHALGAON	0.5
73	JASHPURNAGAR	0.0
74	Bodla	0.8
75	Sahaspurlohara	5.0
76	Pandaria	0.2
77	KAWARDHA	0.0
78	Charama	0.0
79	Nerharpur	0.0
80	Poudi Uparora	6.2
81	Kartala	9.2
82	PALI	1.4
83	KATGHORA	0.0
84	Sonhat	0.0
85	Khadgava	0.0
86	Pithora	0.0
87	Bagbahara	0.0
88	Basana	0.0
89	MAHASAMUND	0.0
90	SARAI PALI	0.0
91	Patharia	0.0
92	Lormi	0.0
93	MUNGELI	0.0
94	Kharsiya	26.3
95	Lailunga	2.6
96	Pusaur	3.4
97	Baramkela	0.0
98	Tamnar	21.8
99	SARANGARH	0.0
100	RAIGARH	15.1
101	GHARGHODA	7.3
102	MANA-RAIPUR-AP	0.0
103	ARANG	0.0
104	Tilda	0.0
105	Abhanpur	0.0
106	Chhui khadan	0.0
107	Khairagarh	0.0
108	Chhuria	0.0
109	RAJNANDGAON	0.0
110	DONGARGARH	0.0
111	DONGARGAON	0.0
112	GANDAI	0.0
113	AMBAGARH CHOWKI	6.2
114	Premnagar	0.0
115	Ramanujnagar	0.0
116	Batoli	0.0
117	Sitapur	0.0
118	Lundra	0.0
119	KOLABIRA	0.0
120	PARMANPUR	2.8
121	PENDRA RD (CWC)	0.0
122	RAIPUR(IMD)	0.0
123	RAIPUR (CWC)	0.0
124	RAJIM	0.0
125	RAMPUR	0.0
126	SANKARA	0.0
127	SEORINARAYAN	0.0
128	SIMGA	0.0
129	SUNDERGARH (IMD)	0.0
130	SUND-RH (CWC)	7.0
131	SURAJGARH	0.0
132	THETTANG	4.4
133	GOPALPUR	13.8
134	ZONDRA	0.0
135	BALISANKRA	0.0
136	BAMRA	3.4
137	LEPHRIPARA	1.0
138	KUTRA	0.0
139	TANGARPALI	0.0
140	KIRMIRA	0.0
141	LAKHANPUR	2.0

SI No	Name of Stations	Rainfall (in mm)
LOWER MAHANADI		
1	SATYABADI	0.0
2	DERABIS	0.0
3	JHARBANDH	0.0
4	GAISILETE	0.0
5	PHIRINGIA	0.0
6	ALIPINGAL	0.0
7	ARMPUR	0.0
8	ATHAGARH	0.0
9	ATHAMALIK	0.0
10	BALIGUDA	0.0
11	BANPUR	0.0
12	BARGARH	0.0
13	BARMUL	0.0
14	BELGAON	0.0
15	BHAWANIPATNA(IMD)	0.0
16	BHUBANESWAR (IMD)	1.2
17	BIJEPUR	0.0
18	BINIKA	0.0
19	BOLANGIR (IMD)	0.0
20	BOUDA GARH	0.0
21	BURLA (CWC)	0.0
22	BURLA (IRRI)	0.0
23	CUTTACK (IMD)	0.0
24	CHILIKA	0.0
25	DASHPALLA	0.0
26	DUNGURIPALI	2.0
27	GOP	0.0
28	HARABHANGA	0.0
29	HIRAKUD (IMD)	0.0
30	JAIPATNA	0.0
31	JUNAGARH	0.0
32	KAKATPUR	0.0
33	KALINGA	0.0
34	KANAS	0.0
35	KANTAMAL (BDO)	0.0
36	KANTAMAL (CWC)	0.0
37	KENDRAPARA	0.0
38	KENDRAPARA (PTO)	0.0
39	KESINGA	0.0
40	KHANDAPADA* (BDO)	0.0
41	KHANDAPADA (CWC)	0.0
42	KHARIAR	0.0
43	KHAIRMAL (IRR)	0.0
44	KHAIRAMAL (CWC)	0.0
45	KOMNA	0.0
46	M. RAMPUR	0.0
47	MUNDALI	0.0
48	NARAJ	0.0
49	NARASINGHPUR	0.0
50	NAYAGARH	0.0
51	NIMAPARA	0.0
52	PADAMPUR	0.0
53	PADMABATI	0.0
54	PAIKAMAL	0.0
55	PARADEEP (IMD)	0.7
56	G.UDAYGIRI	0.0
57	PATNA GARH	0.0
58	PATAMUNDAI	0.0
59	PHULBANI (IMD)	0.0
60	PHULBANI (CWC)	0.0
61	PIPLI	1.0
62	PURI (IMD)	0.1
63	RAIRAKHOL	0.0
64	R.K NAGAR	5.4
65	RANPUR	0.0
66	SALBHATTA	12.2
67	SAMBALPUR (IMD)	0.3
68	SOHELA	0.0
69	SONEPUR	0.0
70	TANGI	0.0
71	TIKABALI	0.0

SI No	Name of Stations	Rainfall (in mm)
LOWER MAHANADI		
72	TIKARAPARA	0.0
73	TITLA GARH (IMD)	0.0
74	KOKSARA	3.0
75	TUREIKELA	0.0
76	KALAMPUR	2.0
77	SINAPALI	0.0
78	BODEN	0.0
79	LOISINGHA	0.0
80	TIRTOL	0.0
81	SAINTALA	0.0
82	NARLA	0.0
83	AGALPUR	2.0
84	RAIKIA	0.0
85	B.M.PUR	0.0
86	BARPALI	0.0
87	ATTABIRA	0.0
88	BHATALI	0.0
89	TH. RAMPUR	15.0
90	GUDVELA	0.0
91	DEOGAON	0.0
92	BANGAMUNDA	0.0
93	BIRIDI	0.0
94	NAUGAON	0.0
95	GOLAMUNDA	0.0
96	CHAKAPAD	0.0
97	KHAJURIPADA	0.0
98	MOHAKALAPADA	0.0
99	JATNI	0.0
100	BEGUNIA	0.0
101	BHAPUR	0.0
102	DHANKAUDA	0.0
103	JAGATSingHPUR(PTO)	0.3
104	KHORDHA(PTO)	3.0
105	CHANDAHANDI	0.0
106	JHORIGAM	2.2
107	DHARMAGARH	0.0
108	BELPADA	0.0
109	KHAPRAKHOL	0.0
110	TARVA	0.0
111	K NUAGAON	0.0
112	JUJUMURA	0.0
113	ULLUNDA	2.0
114	KARLAMUNDA	0.0
115	BOLAGARH	0.0
116	GANIA	0.0
117	BANKI	0.0
118	TIGIRIA	0.0
119	ASTARANGA	0.0
120	BRAHMAGIRI	0.0
121	KRISHNAPRASAD	0.0
122	KANTAPADA	5.0
123	MAHANGA	0.0
124	NIALI	0.0
125	NISCHINTAKOILI	3.0
126	SALEPUR	4.0
127	BALIKUDA	0.0
128	RAGHUNATHPUR	0.0
129	GARADAPUR	0.0
130	MARSAGHAI	0.0
131	BALIPATNA	0.0
132	KUJANGA	0.0
133	NUAUGAON	0.0
134	ODAGAON	0.0
135	BASANA	0.0
136	DEOBHOG	0.0

**RAINFALL FOR PAST 24 HRS ENDING AT 0830 HRS OF DATE**

**Date:-26.08.2023**

SI No	Name of Stations	Rainfall (in mm)
<b>UPPER BRAHMANI</b>		
1	MANORA	0.4
2	LAHUNIPARA	0.0
3	PALLAHARA	0.0
4	PANPOSH	0.4
5	RAJGANGA PUR	0.0
6	BARKOTE	0.0
7	BONAI	9.0
8	DEOGARH	0.0
9	MANDIRADAM	0.0
10	TENSA	32.2
11	LATHIKATA	3.4
12	JODA	4.2
13	GURUNDIA	5.0
14	PALKOT	1.2
15	RAIDIH	0.0
16	KURU	0.0
17	LOHARDAGA	0.4
18	MANDAR	0.0
19	KOLEBIRA	0.0
20	KURDEG	0.0
21	SIMDEGA	0.0
22	JASHPURNAGAR	0.0
23	RAURKELA(Airport)	0.8
<b>LOWER BRAHMANI</b>		
1	REAMAL	0.0
2	RENGALI	0.0
3	ALTUMA	0.0
4	ANGUL (IMD)	0.0
5	BATAGAON	0.0
6	CHHENDIPADA	0.0
7	DHENKANAL	0.0
8	DHENKANAL (PTO)	0.0
9	HINDOL	0.0
10	JENAPUR	0.4
11	KAMAKHYA NGR	0.0
12	NAKTIDEUL	0.0
13	SUKINDA	0.0
14	TALCHER	0.0
15	TELKOI	0.0
16	KANKADAHAD	1.2
17	JAJPUR	2.0
18	JAJPUR (PTO)	3.2
19	RAJ KANIKA	0.0
20	AUL	0.0
21	RAJNAGAR	0.0
22	BANARPAL	0.0
23	KANIHA	0.0
24	PARJANG	0.0
25	GONDIA	0.0
26	BHUBAN	0.0
27	DANAGADI	0.0
28	KOREI	0.0
29	CHANDIKHOL	0.0
30	BARI	0.0
31	BINJHARPUR	0.0

SI No	Name of Stations	Rainfall (in mm)
<b>BAITARANI</b>		
1	BONTH	0.0
2	AKHUAPADA	1.0
3	ANANDAPUR	1.8
4	CHAMPUA	10.8
5	CHANDBALI (IMD)	0.4
6	DAITARI	NR
7	GHATGAON	0.0
8	JHUMPURA	0.0
9	JOSHIPUR	8.4
10	KARANJIA	10.0
11	KEON-GARH (IMD)	6.6
12	KEONJHAR (CWC)	0.0
13	SWAMPATNA	3.2
14	THAKUR-DA(BDO)	2.0
15	THAKUR-DA (CWC)	2.2
16	SAHARPADA	0.0
17	KAPTIPADA	0.0
18	HATADIHI	2.1
19	BHADRAK	0.0
20	BHANDARIPOKHARI	0.0
21	BANSPAL	0.0
22	GHASIPURA	3.3
23	SUKRULI	11.2
24	RARUANA	13.0
25	DHAMNAGAR	0.0
26	TIHIDI	1.0
27	HARICHANDANPUR	0.0
<b>NAGAVALI</b>		
1	K.SINGHPUR	17.2
2	RAYAGADA	25.4
3	SANKIL RD BRIDGE	NR
4	JANJHAVATI RDB	NR
5	JAGGAGUDA	NR
6	SRIKAKULAM	30.2
7	BANDHUGAN	5.0
8	SALUR	5.6
9	KOLNARA	21.2
10	Komarada	44.2
11	Jiyyammavalasa	19.4
12	Garugubilli	9.2
13	Parvathipuram	44.2
14	Bobbili	9.6
15	Therlam	19.2
16	Pusapatirega	60.8
17	Denkada	37.4
18	Vizianagaram	53.2
19	Vepada	26.0

SI No	Name of Stations	Rainfall (in mm)
<b>RUSHIKULYA</b>		
1	BUGUDA	0.0
2	ASKA	0.0
3	BERHAMPUR	0.0
4	BHANJANAGAR	0.0
5	CHHATRAPUR	0.0
6	DARINGIBADI	0.0
7	GOPALPUR (IMD)	0.0
8	MADHABARIDA	0.0
9	PUSOTTAMPUR	0.0
10	DIGAPAHANDI	0.0
11	JAGANNATHPRASAD	1.1
12	SORADA	0.0
13	POLASARA	0.0
14	KODALA	0.0
15	RANGEILUNDA	0.0
16	KUKUDAHANDI	0.0
17	PATRAPUR	2.0
18	SANKHEIMUNDI	0.0
19	DHARAKOTE	0.0
20	SHERAGADA	0.0
21	GANJAM	0.0
22	BELAGUNTHA	0.0
23	HINJILI	0.0
<b>VANSADHARA</b>		
1	AMBADOLA	0.0
2	BISSAM CUTTACK	5.6
3	GOTTA BARRAGE	26.6
4	GUDARI	9.2
5	GUNUPUR	11.2
6	KALINGA-NAM (IMD)	0.0
7	KASHINAGAR	16.0
8	KOTAGARH	0.0
9	KOTRAGUDA	0.0
10	MAHENDRAGARH	3.2
11	MOHANA	0.0
12	PARAKHEMUNDI	33.6
13	R.GUDA	16.6
14	NUAGADA	5.8
15	MUNIGUDA	0.0
16	R.UDAYAGIRI	21.4
17	LANJIGARH	0.0
18	NELIAPUTY	NR
19	SIRJHOLY	NR
20	GUMMA	6.0
21	GOSANI	14.0
22	CHADRAPUR	12.3
23	Balajipeta	8.4

SI No	Name of Stations	Rainfall (in mm)
<b>SUBERNAREKHA</b>		
1	SARASAKANA	12.0
2	BHOGARAI	6.0
3	FEKOGHAT	0.0
4	GHATSILA	11.4
5	JALESWAR	0.0
6	JAMSEDPUR (IMD)	26.7
7	JAMSEDPUR (CWC)	26.4
8	JAMSOLAGHAT	5.8
9	RAIRANG PUR	35.0
10	RAJGHAT	10.6
11	RANCHI	0.2
12	TIRING	10.2
13	BIJATALA	35.0
14	KUSUMI	0.0
15	JAMDA	38.0
16	ARKI	47.0
17	ICAR NAMKUM	0.0
18	ORMANJHI	0.0
19	CHANDIL	37.4
20	KHARSEMA	12.4
21	NIMDIH	8.0
22	CHAIBASA	1.4
23	CHAKRADHARPUR	39.2
24	BAHALDA	16.6
<b>BUDHABALANGA</b>		
1	BALASORE (IMD)	13.8
2	BALASORE (CWC)	21.6
3	BALIMUNDALI	3.2
4	BANGIRIPOSHI	31.6
5	BARIPADA (IMD)	5.0
6	BARIPADA (CWC)	3.8
7	CHANDANPUR	6.2
8	JAIPUR	7.8
9	NAWANA	7.6
10	NH-5, GOVINDPUR	25.0
11	NILGIRI	1.0
12	SORO	4.0
13	BETANATI	8.0
14	UDALA	35.0
15	BAHANAGA	6.0
16	KHAIRA	0.0
17	MURUDA	10.0
18	SULIAPADA	31.0
19	G.B.NAGAR	7.2
20	REMUNA	19.0
21	SAMAKHUNTA	0.0
22	BASUDEVPUR	0.0
23	CHANDUA(KULIANA)	17.0
24	RASAGOVINDAPUR	14.6
25	OUPADA	0.0

Source:-Met Centre Bhubaneswar

## BLOCKWISE RAINFALL FOR PAST 24 HRS ENDING AT 0830 HRS OF DATE

Date:26.08.2023

SI No	Name of Stations	Rainfall (in mm)	SI No	Name of Stations	Rainfall (in mm)	SI No	Name of Stations	Rainfall (in mm)	SI No	Name of Stations	Rainfall (in mm)	SI No	Name of Stations	Rainfall (in mm)
<b>1. ANGUL</b>			<b>8. DEOGARH</b>			4	Madanpur Rampur	0.0	<b>21. MALKANGIRI</b>			<b>27. RAYAGADA</b>		
1	Angul	0.0	1	Barkote	0.0	5	Narla	0.0	1	Malkangiri	9.0	1	Rayagada	27.6
2	Banarpal	0.0	2	Deogarh	0.0	6	Lanjigarh	0.0	2	Mathili	1.0	2	Kolnara	21.2
3	Chhendipada	0.0	3	Reamal	0.0	7	Thuamul Rampur	15.0	3	Khoirput	21.0	3	Kalyansingpur	17.2
4	Talcher	0.0	<b>Avg 0.0</b>			8	Dharmagarh	0.0	4	Chittrakonda (K.Gumma)	23.0	4	Kashipur	21.2
5	Kaniha	0.0	<b>9. DHENKANAL</b>			9	Junagarh	0.0	5	Korukonda	45.0	5	Gunupur	8.0
6	Athamalik	0.0	1	Dhenkanal	0.0	10	Kalampur	2.0	6	Kalimela	31.0	6	Padmapur	35.2
7	Kishorenagar	5.4	2	Gondia	0.0	11	Jayapatna	0.0	7	Podia	28.4	7	Gudari	6.4
8	Pallahara	0.0	3	Odapada	0.0	12	Kokasara	3.0	<b>Avg 22.6</b>			8	Ramanaguda	16.6
<b>Avg 0.7</b>			4	Hindol	0.0	13	Golamunda	0.0	<b>22. MAYURBHANJ</b>			9	Bissam Cuttack	5.6
<b>2. BALASORE</b>			5	Kamakhyanager	0.0	<b>Avg 1.5</b>			1	Samakhunta	0.0	<b>28. SAMBALPUR</b>		
1	Bhograi	6.0	6	Bhuban	0.0	<b>16. KANDHAMAL</b>			2	Badasahi	4.0	1	Jujumura	0.0
2	Basta	20.0	7	Parjang	0.0	1	Baliguda	0.0	3	Betanati	8.0	2	Dhankauda	0.0
3	Jaleswar	0.0	8	Kankadahad	1.2	2	Chakapad	0.0	4	Morda	10.0	3	Rengali	1.8
4	Baliapal	8.0	<b>Avg 0.2</b>			3	Daringibadi	0.0	5	Rasgovindapur	14.6	4	Maneswar	3.4
5	Balasure	18.0	<b>10. GAJAPATI</b>			4	G.Udayagiri	0.0	6	Kuliana	17.0	5	Kuchinda	15.0
6	Remuna	19.0	1	Kasinagar	16.6	5	Khajuripada	0.0	7	Sarasakana	12.0	6	Jamankira	0.0
7	Nilagiri	1.0	2	Paralakhemundi	33.6	6	Kotagarh	0.0	8	Suliapada	31.0	7	Bamra	3.4
8	Soro	4.0	3	Rayagada	3.0	7	Nuagaon	0.0	9	Bangriposi	31.6	8	Rairakhol	0.0
9	Bahanaga	6.0	4	Gumma	6.0	8	Phiringia	0.0	10	Baripada	11.0	9	Naktideul	0.0
10	Simulia	3.0	5	Nuagada	5.8	9	Phulbani	0.0	11	Khunta	4.5	<b>Avg 2.6</b>		
11	Khaira	0.0	6	R.Udaygiri	21.4	10	Raikia	0.0	12	Gopabandhunagar	7.2	<b>29. SUBARNAPUR</b>		
12	Oupada	0.0	7	Mohana	0.0	11	Tikabali	0.0	13	Udala	35.0	1	Sonepur	0.0
<b>Avg 7.1</b>			8	Gosani	14.0	12	Tumudibandh	0.0	14	Kaptipada	0.0	2	Binika	0.0
<b>3. BARGARH</b>			<b>Avg 12.6</b>			<b>Avg 0.0</b>			15	Besoi	22.0	3	Tarbha	0.0
1	Ambabhona	0.0	<b>11. GANJAM</b>			<b>17. KENDRAPARA</b>			16	Bijatata	35.0	4	Dunguripali	2.0
2	Attabira	0.0	1	Chhatrapur	0.0	1	Kendrapara	0.0	17	Rairangapur	8.0	5	Birmaharajpur	0.0
3	Bargarh	0.0	2	Ganjam	0.0	2	Derabis	0.0	18	Kusumi	0.0	6	Ullunda	2.0
4	Barpali	0.0	3	Purusottampur	0.0	3	Marshaghai	0.0	19	Jamda	38.0	<b>Avg 0.7</b>		
5	Bhatli	0.0	4	Kabisuryanagar	0.0	4	Mohakalpara	0.0	20	Bahalda	16.6	<b>30. SUNDARGARH</b>		
6	Bheden	0.0	5	Polasara	0.0	5	Garadapur	0.0	21	Tiring	10.2	1	Hemgir	8.4
7	Bijepur	0.0	6	Kodala	0.0	6	Pattamundai	0.0	22	Joshipur	8.4	2	Lephripara	1.0
8	Gaisilet	0.0	7	Khalikot	0.0	7	Aul	0.0	23	Karanja	10.0	3	Tangarpali	0.0
9	Jharbandh	0.0	8	Hinjilicut	0.0	8	Rajnagar	0.0	24	Thakurmunda	2.0	4	Sundargarh	0.0
10	Padampur	0.0	9	Rangeilunda	0.0	9	Rajkanika	0.0	25	Sukuruli	11.2	5	Subdega	0.0
11	Paikmal	0.0	10	Kukudakhandi	0.0	<b>Avg 0.00</b>			26	Raruana	13.0	6	Balisankara	0.0
12	Sohela	0.0	11	Chikiti	0.0	<b>18. KEONJHAR</b>			<b>Avg 13.9</b>			7	Bargaon	0.0
<b>Avg 0.0</b>			12	Patrapur	2.0	1	Keonjhar	5.4	<b>23. NAWARANGHPUR</b>			8	Kutra	0.0
<b>4. BHADRAK</b>			13	Sanakhemundi	0.0	2	Banspal	0.0	1	Nawarangpur	17.4	9	Rajgangpur	0.0
1	Bhadrak	0.0	14	Digapahandi	0.0	3	Telkoi	0.0	2	Nandahandi	15.0	10	Kuarmunda	0.0
2	Bhandaripokhari	0.0	15	Bhanjanagar	0.0	4	Patna	8.0	3	Tentulikhunti	21.0	11	Nuagaon	0.0
3	Basudevpur	0.0	16	Belaguntha	0.0	5	Saharpada	0.0	4	Papadahandi	7.0	12	Bisra	8.2
4	Bonth	0.0	17	Jagannathprasad	1.1	6	Ghatgaon	0.0	5	Kosagumuda	31.8	13	Lathikata	3.4
5	Chandbali	1.0	18	Buguda	0.0	7	Harichandanpur	0.0	6	Dabugaon	9.0	14	Bonai	9.0
6	Dhamnagar	0.0	19	Aska	0.0	8	Anandapur	2.5	7	Umerkote	9.2	15	Lahunipara	0.0
7	Tihidi	1.0	20	Dharakote	0.0	9	Ghasipura	3.3	8	Raighar	0.0	16	Gurundia	5.0
<b>Avg 0.3</b>			21	Sheragada	0.0	10	Hatadihi	2.1	9	Jharigaon	2.2	17	Koira	0.0
<b>5. BALANGIR</b>			22	Sorada	0.0	11	Champua	8.0	10	Chandahandi	0.0	<b>Avg 2.1</b>		
1	Balangir	0.0	<b>Avg 0.1</b>			12	Joda	4.2	<b>24. NAYAGARH</b>					
2	Puintala	0.0	<b>12. JAGATSINGHPUR</b>			13	Jhumpura	0.0	1	Bhapur	0.0			
3	Gudvella	0.0	1	Jagatsinghpur	1.0	<b>Avg 2.6</b>			2	Daspalla	0.0			
4	Duduka	2.0	2	Biridi	0.0	<b>19. KHORDHA</b>			3	Gania	0.0			
5	Deogaon	0.0	3	Raghunathpur	0.0	1	Balianta	0.0	4	Khandapara	0.0			
6	Loisingha	0.0	4	Balikuda	0.0	2	Balipatna	0.0	5	Nayagarh	0.0			
7	Patnagarh	0.0	5	Naugaon	0.0	3	Bhubaneswar	0.0	6	Nuagaon	0.0			
8	Belpada	0.0	6	Tirtol	0.0	4	Jatani	0.0	7	Odagaon	0.0			
9	Khaprakhol	0.0	7	Kujanga	0.0	5	Banapur	0.0	8	Ranpur	0.0			
10	Titilagarh	0.0	8	Erasama	0.0	6	Begunia	0.0	<b>Avg 0.0</b>					
11	Tureikela	0.0	<b>Avg 0.1</b>			7	Bolagarh	0.0	<b>25. NUAPADA</b>					
12	Bangomunda	0.0	<b>13. JAJPUR</b>			8	Chilika	0.0	1	Boden	0.0			
13	Muribahal	0.0	1	Jajpur	2.0	9	Khordha	0.0	2	Khariar	0.0			
14	Saintala	0.0	2	Binjharpur	0.0	10	Tangi	0.0	3	Komma	0.0			
<b>Avg 0.1</b>			3	Dasarathpur	0.0	<b>Avg 0.0</b>			4	Nuapada	0.0			
<b>6. BOUDH</b>			4	Korei	0.0	<b>20. KORAPUT</b>			5	Sinapali	0.0			
1	Boudh	0.0	5	Danagadi	0.0	1	Koraput	17.0	<b>Avg 0.0</b>					
2	Kantamal	0.0	6	Sukinda	0.0	2	Lamataput	15.2	<b>26. PURI</b>					
3	Harabhanga	0.0	7	Rasulpur	0.0	3	Pottangi	4.0	1	Astarang	0.0			
<b>Avg 0.0</b>			8	Dharmasala	0.0	4	Bandhugaon	5.0	2	Brahmagiri	0.0			
<b>7. CUTTACK</b>			9	Badachana	0.0	5	Nandapur	8.0	3	Delang	0.0			
1	Athagarh	0.0	10	Bari	0.0	6	Dasmantpur	16.0	4	Gop	0.0			
2	Banki-Dampada	0.0	<b>Avg 0.2</b>			7	Narayanpatna	7.6	5	Kakatpur	0.0			
3	Barang	0.0	<b>14. JHARSUGUDA</b>			8	Laxmipur	7.0	6	Kanas	0.0			
4	Badamba	0.0	1	Jharsuguda	0.0	9	Similiguda	4.0	7	Krushnaprasad	0.0			
5	Cuttack Sadar	0.0	2	Kolabira	0.0	10	Jeyapore	7.4	8	Nimapara	0.0			
6	Kantapada	5.0	3	Laikera	0.0	11	Kotpad	62.0	9	Pipili	1.0			
7	Mahanga	0.0	4	Kirmira	0.0	12	Kundra	15.4	10	Puri	0.0			
8	Niali	0.0	5	Lakhanpur	2.0	13	Borigumma	58.6	11	Satyabadi	0.0			
9	Nischintakoili	3.0	<b>Avg 0.4</b>			14	Boipariguda	4.0	<b>Avg 0.1</b>					
10	Narasinghpur	0.0	<b>15. KALAHANDI</b>			<b>Avg 16.5</b>								
11	Salepur	4.0	1	Bhabanipatna	0.0									
12	Tangi-Choudwar	0.0	2	Kesinga	0.0									
13	Tigiria	0.0	3	Karlamunda	0.0									
<b>Avg 0.9</b>														