



Flood Bulletin,2023

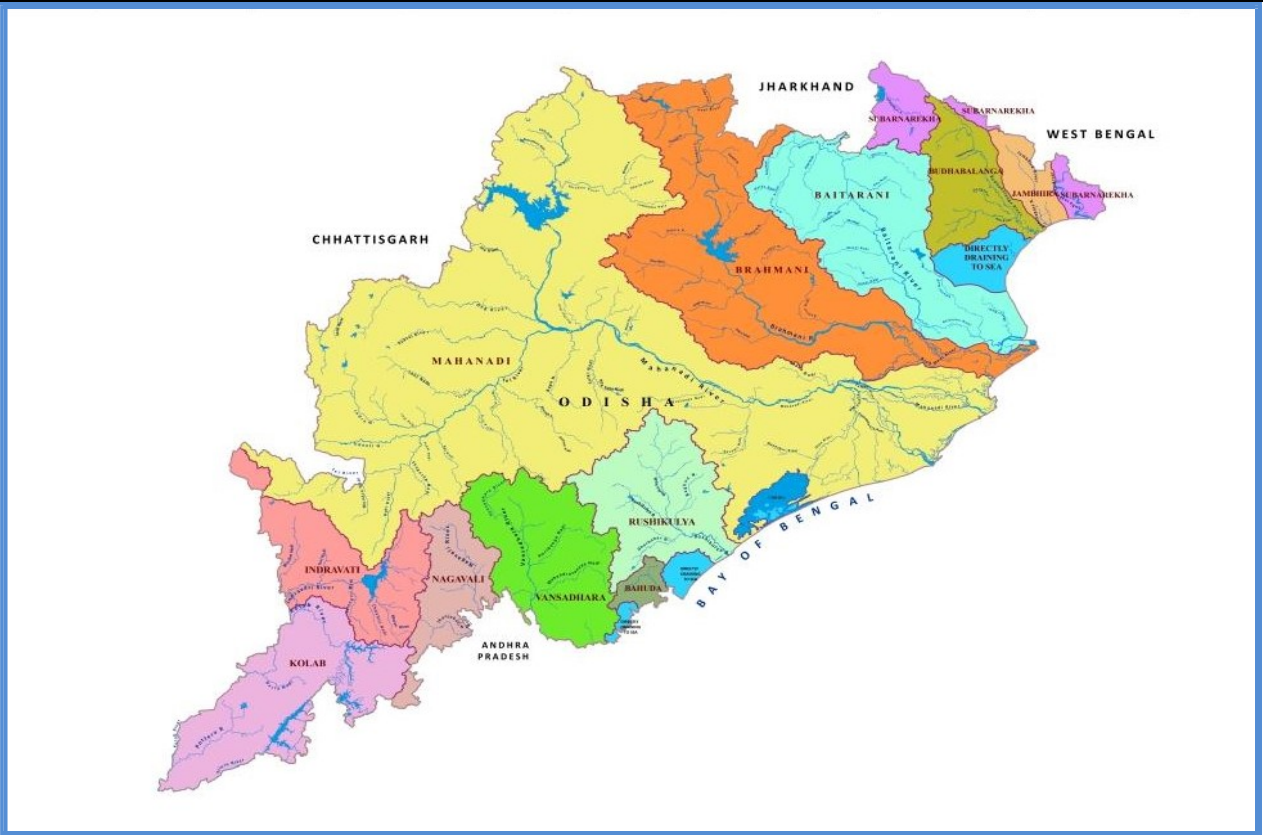
Government of Odisha

Department of Water Resources

Volume No.118

Date: 26.09.2023

Time: 14:00Hr



Contents

- Status of River Gauge
- Status of Reservoirs
- IMD Weather Bulletin
- River Discharge
- Rainfall Situation
- IMD Forecast

Flood Cell

Office of the Engineer-in-Chief, Water Resources, Odisha
Secha Sadan, Bhubaneswar
Tel:0674-2395951,2395953e-Mail:floodcelleicwr@gmail.com
url: dowr.odisha.gov.in & dowrodisha.gov.in

Status of Gauge (in m)

Name of River	Gauge Site	Danger Level (DL)	Warning Level	Time (Hrs)	Present Level	Trend	(wrt DL)	Highest Recorded Level	
								Level	Date
Mahanadi	Khairmal	109.0	108.0	12:00	104.10	S	-4.90	108.31	19.09.08
	Tikarpara	-	-	12:00	64.25	F	-	74.98	30.08.82
	Naraj (IB)	26.41	25.41	12:00	25.49	F	-0.92	27.60	31.08.82
Kusabhadra	Nimapara	10.76	9.85	12:00	6.18	S	-4.58	11.60	31.08.82
Devi	Alipingala	11.76	10.85	12:00	8.69	S	-3.07	13.05	20.09.08
Brahmani	Panposh	178.42	177.51	12:00	173.23	F	-5.19	181.44	24.09.11
	Rengali	88.0	-	12:00	78.20	R	-9.80	92.25	18.08.75
	Talcher	62.91	-	12:00	54.87	R	-8.04	65.53	19.08.75
	Jenapur	23.0	22.0	12:00	19.20	R	-3.80	24.78	20.08.75
	Indupur	8.23	-	12:00	4.17	F	-4.06	-	-
Baitarani	Champua	376.41	375.33	12:00	372.04	R	-4.37	379.06	23.09.11
	Swampatna	311.1	-	12:00	306.35	S	-4.75	315.66	14.08.75
	Anandapur	38.36	37.44	12:00	34.48	S	-3.88	41.35	23.09.11
	Akhuapada	18.33	17.83	12:00	17.09	R	-1.24	21.95	16.08.60
Budhabalanga	Chandanpur	-	-	12:00	81.78	S	-	85.80	09.11.95
	Baripada	30.92	29.7	12:00	22.14	S	-8.78	34.82	13.10.13
	Balimundali	-	-	12:00	37.12	F	-	42.20	1995
	NH5-Govindapur	8.13	7.21	12:00	2.70	R	-5.43	9.67	12.10.73
Subarnarekha	Jamshedpur	123.5	122.5	12:00	116.40	F	-7.10	129.82	12.10.73
	Jamsolaghat	49.16	48.32	12:00	45.46	R	-3.70	56.91	03.09.78
	Rajghat	10.36	9.45	12:00	6.09	S	-4.27	12.69	19.06.08
Jalaka	Mathani Road Bridge	6.50	6.0	12:00	4.50	R	-2.00	7.31	22.09.21
Rushikulya	Sorada	81.99	80.99	12:00	77.86	S	-4.13	83.21	04.11.90
	Madhabarida	60.65	-	12:00	56.26	S	-4.39	61.44	18.10.99
	Purusottampur	16.84	15.84	12:00	12.66	S	-4.18	19.60	04.11.90
Vansadhara	Gudari	-	-	12:00	114.86	F	-	121.82	17.09.80
	Gunupur	84.0	83.0	12:00	81.34	F	-2.66	88.75	17.09.80
	Kashinagar	54.6	54.1	12:00	53.51	F	-1.09	58.93	18.09.80

Status of Major Reservoirs

Name of the Reservoir	Dead Storage Level	FRL/ MWL	Reservoir Level	LS Available/ Live Storage Capacity (%)	Last Year (2022) R.L/ Live Storage Avl (%)	Inflow	Total Outflow	Gates Open (Nos)/ Trend
1.Hirakud 12:00Hr	590.0 ft	630.0ft	628.79 ft	<u>4587.0 Mcum</u> 4822.83Mcum (95.1%)	<u>630.0 ft</u> 99.8%	2,77,087.0 Cusec	1,99,165.0 Cusec	10/98 Rising
2.Rengali 12:00Hr	109.72 m	<u>123.5 m</u> 125.4 m	121.56 m.	<u>277739.0Ham</u> 341371.0 Ham (81.4%)	<u>122.6 m</u> 91.0%	1654.10 Cumec	746.53 Cumec	0/27 Rising
3.U. Indravati 09:00Hr	625.0 m	<u>642 m</u> 643 m	637.31 m.	<u>96187.0 Ham</u> 148550.0 Ham (64.8%)	<u>640.2 m</u> 84.5%	141.21 Cumec	52.51 Cumec	0/12 Rising
4.UpperKolab 08:00Hr	844.0 m	858.0 m	855.57 m.	<u>704.97 Mcum</u> 935.0 Mcum (75.4%)	<u>854.5 m</u> 65.5%	112.34 Cumec	35.63 Cumec	0/11 Rising
5.Balimela 08:00Hr	1440.0 ft	<u>1516 ft</u> 1518 ft	1487.00 ft	<u>133378.0 Ham</u> 267600.0 Ham (49.8%)	<u>1477.8 ft</u> 37.2%	7737.0 Cusec	2783.24 Cusec	0/12 Rising
6.Machhkund (Jalaput) 08:00Hr	2685.0 ft	2750.0 ft	2731.95 ft	<u>49274.0 Ham</u> 89254.7 Ham (55.2%)	<u>2734.2 ft</u> <u>60.1%</u>	1844.0 Cusec	1010.0 Cusec	02/12 Rising
7.Salandi 06:00Hr	50.24 m	<u>82.3 m</u> 83.21m	79.53 m.	<u>47048.0 Ham</u> 55650.0 Ham (84.5%)	<u>77.9 m</u> 74.9%	8.01 Cumec	56.62 Cumec	03/11 Falling
8.LowerIndra 08:00Hr	251.0 m	<u>265 m</u> 265 m	264.12 m.	<u>30106.0 Ham</u> 31425.2Ham (95.8%)	<u>262.7 m</u> 76.9%	53.40 Cumec	31.38 Cumec	01/09 Rising

Note: Total Outflow consists of Irrigation, Spillway, Sluice, Power generation, Industrial & other supply and Evaporation loss *U Indravati-7 gates, Muran Dam-5 gates (Total-12 Nos)

Average Inflow into & Outflow from Reservoir

Reservoir	Inflow	Outflow	Observation Period
Hirakud	3,17,947.0 Cusec	2,92,535.0 Cusec	During last 24 Hrs ending 08:00Hrs of 26.09.2023
Rengali	1988.23 Cumec	697.40 Cumec	During last 24 Hrs ending 06:00Hrs of 26.09.2023

Travel Time of Flow in Mahanadi River

Hirakud Dam	115 km	Khairmal	106 km	Barmul	95 km	Mundali
	12-18 Hrs		12-16 Hrs		12-16 Hrs	

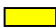

River Discharge

Name of the River	G&D Site	Time (Hrs)	Discharge (cusec)
Mahanadi (Up Stream Hirakud)	Champa	12:00	40,040
	Tarapur	12:00	BG
	Saradihi	12:00	2,35,360
	Kalma	09:00	NR
	Deogaon	12:00	13,424
Mahanadi (Down Stream Hirakud)	Khairmal	12:00	3,30,000
	Barmul	12:00	4,44,000
	Mundali	12:00	5,64,085
Tel	Patharla	12:00	57,247
Baitarani	NH-5 Akhuapada	08:00	NR
Brahmani	Pankapal	08:00	25,280
Subarnarekha	Rajghat	09:00	28,674
Rushikulya	Purusottampur	09:00	4,036

Status of Medium Reservoir

Sl.	Name of Dam / Reservoir	Available Live Storage (%) (Gates Open)	Sl.	Name of Dam / Reservoir	Available Live Storage (%) (Gates Open)	Sl.	Name of Dam / Reservoir	Available Live Storage (%) (Gates Open)
1.	Badanalla	90.5%	17.	Harabhangi	42.1%	33.	Ret	94.4%
2.	Baghalati	48.6%	18.	Harihorjore	99.0%	34.	Rukura	94.0% (1)
3.	Baghua	78.3%	19.	Jambira*	6.9%	35.	Saipala	99.7%
4.	Bankabahal	88.6%	20.	Jharbandh*	100.0%	36.	Salia*	100.0%
5.	Bhanjanagar	93.7%	21.	Kalo	88.7%	37.	Sapua*	100.0%
6.	Bhaskel*	52.3%	22.	Kanjhari	89.2% (1)	38.	Saraphgarh	89.1%
7.	Budhabudhiani	88.0%	23.	Kansabahal	95.2%	39.	Satiguda*	100.0%
8.	Dadarghati*	93.5%	24.	Khadkhai	86.8%	40.	Soroda*	74.7%
9.	Daha	93.8%	25.	Kuanria	89.8%	41.	Sunder	92.3%
10.	Deo	86.2% (5)	26.	Mandira	33.3% (8)	42.	Sunei	86.9% (1)
11.	Derjang	91.9%	27.	Manjore	84.2%	43.	Talsara	89.2%
12.	Dhanei*	100.0%	28.	Nesa*	83.2%	44.	Telengiri	64.5% (1)
13.	Dumberbahal	100.0%	29.	Pilasalki*	100.0%	45.	Titlagarh	84.3%
14.	Ghodahada	36.5%	30.	Pitamahal*	100.0%	46.	Upper Jonk	85.5%
15.	Gohira	97.1%	31.	Ramial	84.8%	47.	Upper Suktel*	100.0%
16.	Haladia	18.3%	32.	Remal	84.3%			

Note: *Un-gated Dams (13 Nos.)

Above 75% 
Above 90% 

Medium Reservoir: 47 Nos.

(Gated-32, Un-Gated-13),

Below 50%: 6 Nos., Between 50% to 75%: 3 Nos., Above 75%:38 Nos.

AVAILABLE LIVE STORAGE CAPACITY OF MAJOR & MEDIUM RESERVOIRS (26.09.2023)

No. of Gates Open/Total Gates:

Major

1. Hirakud-10/98
2. Lower Indra-01/09
3. Salandi- 03/11
4. Jalaput-02/12

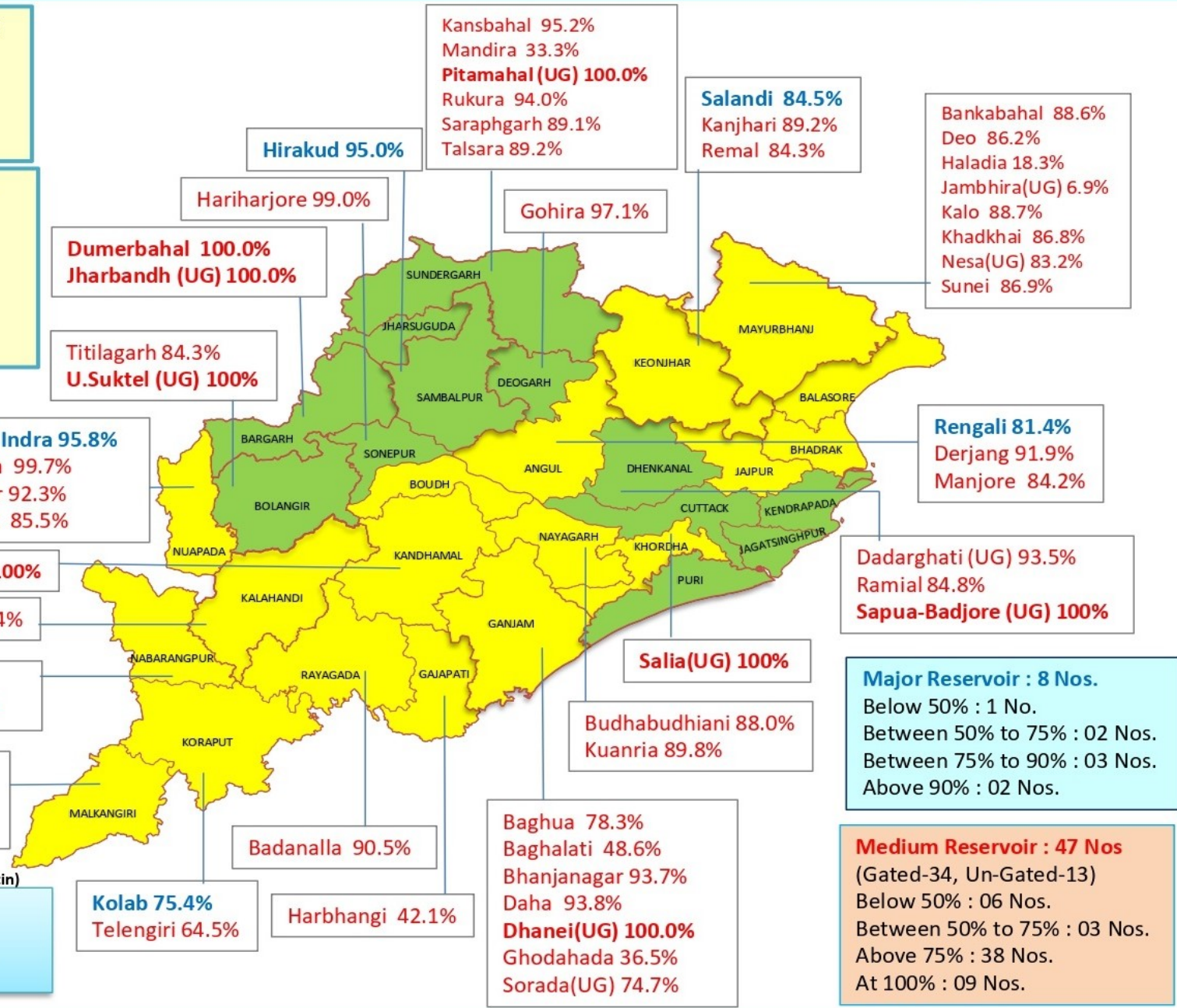
No. of Gates Open/Total Gates:

Medium

1. Deo- 05/07
2. Mandira-08/13
3. Kanjhari- 01/07
4. Rukura-01/04
5. Sunei-01/06
6. Telengiri-01/03

Source IMD-26.09.23 (Mid Day Bulletin)

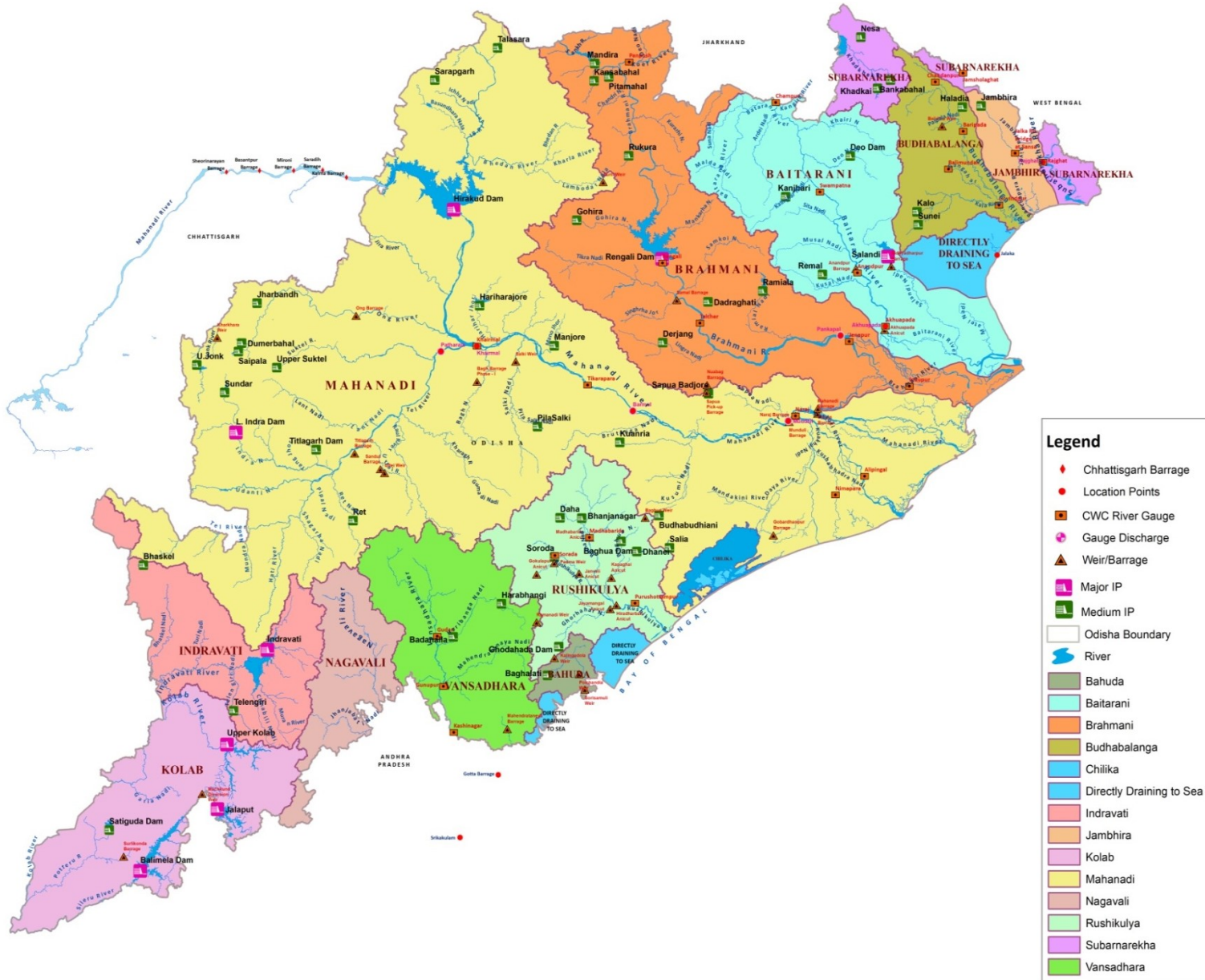
- No Warning
 - Heavy Rainfall
 - Very Heavy Rainfall
 - Extremely Heavy Rainfall
 - Thunderstorm with Lightning & Rainfall
- (Valid upto 08:30 hrs of IST 27.09.2023)



Major Reservoir : 8 Nos.
 Below 50% : 1 No.
 Between 50% to 75% : 02 Nos.
 Between 75% to 90% : 03 Nos.
 Above 90% : 02 Nos.

Medium Reservoir : 47 Nos
 (Gated-34, Un-Gated-13)
 Below 50% : 06 Nos.
 Between 50% to 75% : 03 Nos.
 Above 75% : 38 Nos.
 At 100% : 09 Nos.

MAJOR & MEDIUM RESERVOIRS , G & D SITES IN ODISHA



Legend

- ◆ Chhattisgarh Barrage
- Location Points
- CWC River Gauge
- ◆ Gauge Discharge
- ▲ Weir/Barrage
- Major IP
- Medium IP
- ▭ Odisha Boundary
- ▬ River
- Bahuda
- Baitarani
- Brahmani
- Budhabalanga
- Chilika
- Directly Draining to Sea
- Indravati
- Jambhira
- Kolab
- Mahanadi
- Nagavali
- Rushikulya
- Subarnarekha
- Vansadhara

भारत सरकार
भारत मौसम विज्ञान विभाग
(पृथ्वी विज्ञान मंत्रालय)
पता : मौसम विज्ञान केन्द्र, भुवनेश्वर
फोन न. २५९६०१० &
२५९६११६
फैक्स न. २५९६०१० &
२५९६०९३



GOVERNMENT OF INDIA
INDIA METEOROLOGICAL DEPARTMENT
(Ministry of Earth Sciences)
METEOROLOGICAL CENTRE
BIJUPATNAIK AIRPORT
BHUBANESWAR-751020
TELE: 2596010 & 2596116
FAX : 2596010 & 2596093
E-MAIL : imdbbsr@ori.nic.in

Ref No: FM/HM Bulletin/118

Dated: 26/09/2023
Time of Issue: 1300 hrs IST

HYDROMET BULLETIN

1) Synoptic Situation

- Conditions are becoming favourable for further withdrawal of Southwest Monsoon from some more parts of northwest & adjoining westcentral India during next 2-3 days
- The line of withdrawal of Southwest Monsoon continues to pass through 28.3°N/72.0°E, Nokhra, Jodhpur, Barmer, 25.7°N/70.3°E
- The cyclonic circulation over southeast Uttar Pradesh & neighbourhood now lies over East Uttar Pradesh & adjoining Bihar at 3.1 km above mean sea level.
- The east-west trough from cyclonic circulation over southeast Uttar Pradesh to West Assam across Bihar and West Bengal at 1.5 km above mean sea level has become less marked.
- The trough from southeast Uttar Pradesh to Telangana across Chhattisgarh extending upto 3.1 km above mean sea level has become less marked.
- The cyclonic circulation over south Chhattisgarh & neighbourhood has become less marked.
- A cyclonic circulation is likely to form over north Andaman Sea & neighbourhood around 29th September. Under its influence a Low-Pressure Area is likely to form over north Andaman Sea & adjoining Eastcentral Bay of Bengal during subsequent 24 hours. Thereafter, it is likely to move west-northwestwards with possibility of gradual intensification.

a) River Sub-basin-wise Quantitative Precipitation Forecast (QPF)

S. No.	Basin Name	Sub-basin Name	QPF (mm)						
			Day-1 (26.09.23)	Day-2 (27.09.23)	Day-3 (28.09.23)	Day-4 (29.09.23)	Day-5 (30.09.23)	Day-6 (01.10.23)	Day-7 (02.10.23)
1	BAITRANI	BT	0.1-10	0.1-10	0.1-10	11-25	26-37	26-37	26-37
2	LOWER BRAHMANI	LB	0.1-10	0.1-10	0.1-10	0.1-10	11-25	26-37	26-37
3	UPPER BRAHMANI	UB	0.1-10	0.1-10	0.1-10	0.1-10	11-25	11-25	26-37
4	BHURABALANG	BB	0.1-10	0.1-10	0.1-10	11-25	26-37	11-25	11-25
5	LOWER MAHANADI	LM	0.1-10	0.1-10	0.1-10	0.1-10	11-25	11-25	11-25
6	NAGAVALI	NV	0.1-10	0.1-10	0.1-10	0.1-10	11-25	11-25	11-25
7	RUSHIKULIYA	RK	0.1-10	0.1-10	0.1-10	0.1-10	11-25	11-25	11-25
8	SUBERNAREKHA	SR	0.1-10	0.1-10	0.1-10	11-25	11-25	11-25	11-25
9	UPPER MAHANADI	UM	0.1-10	0.1-10	0.1-10	0.1-10	11-25	11-25	11-25
10	VAMSDHARA	VD	0.1-10	0.1-10	0.1-10	0.1-10	11-25	11-25	11-25

PF categories (mm)	0	0.1-10	11-25	26-37	38-50	51-75	76-100	>100
--------------------	---	--------	-------	-------	-------	-------	--------	------

2b) River Sub-basin-wise Intensity and Distribution of QPF

S. No	Basin Name	Sub-basin Name	Intensity (I) and Spatial Distribution (D)													
			Day-1 (26.09.23)		Day-2 (27.09.23)		Day-3 (28.09.23)		Day-4 (29.09.23)		Day-5 (30.09.23)		Day-6 (01.10.23)		Day-7 (02.10.23)	
			I	D	I	D	I	D	I	D	I	D	I	D	I	D
1	BAITRANI	BT	L	SCT	L	ISOL	L	SCT	M	FWS	M	WS	M	WS	M	WS
2	LOWER BRAHMANI	LB	L	SCT	L	ISOL	L	ISOL	L	SCT	M	FWS	M	WS	M	WS
3	UPPER BRAHMANI	UB	L	SCT	L	ISOL	L	ISOL	L	SCT	M	FWS	M	FWS	M	FWS
4	BHURABALANG	BB	L	SCT	L	ISOL	L	SCT	M	FWS	M	WS	M	WS	M	WS
5	LOWER MAHANADI	LM	L	SCT	L	ISOL	L	ISOL	L	SCT	M	FWS	M	FWS	M	WS
6	NAGAVALI	NV	L	SCT	L	SCT	L	SCT	L	SCT	M	FWS	M	FWS	M	FWS
7	RUSHIKULYA	RK	L	SCT	L	SCT	L	ISOL	L	SCT	M	FWS	M	FWS	M	WS
8	SUBERNAREKHA	SR	L	SCT	L	ISOL	L	ISOL	M	FWS	M	FWS	M	WS	M	WS
9	UPPER MAHANADI	UM	L	SCT	L	ISOL	L	ISOL	L	SCT	M	FWS	M	FWS	M	WS
10	VAMSDHARA	VD	L	SCT	L	SCT	L	SCT	L	SCT	M	FWS	M	FWS	M	FWS

Spatial Distribution		
DRY	Dry	No station reported rainfall
ISOL	One or two places	25% or less number of stations recorded rainfall 2.5 mm
SCT	At a few places	26%-50% number of stations recorded rainfall 2.5 mm
FWS	At many places	51%-75% number of stations recorded rainfall 2.5 mm
WS	At most places	76%-100% number of stations recorded rainfall 2.5 mm

Intensity					
M.Dry	NIL	0 cm	VL	Very Light Rainfall	Trace
L	Light Rainfall	Upto 1 cm	M	Moderate Rainfall	2-6 cm
H	Heavy Rainfall	7-11 cm	VH	Very Heavy rainfall	12-20 cm
EH	Extremely Heavy Rainfall	21 cm or more			
ExH	Exceptionally Heavy Rainfall	When the amount is a value near about the highest recorded rainfall at or near the station for the month or season. However, this term will be used only when the actual rainfall amount exceeds 12 cm.			

3) River Sub-basin-wise Heavy Rainfall Warning

S. No	Basin Name	Sub-basin Name	Day-1 (26.09.23)		Day-2 (27.09.23)		Day-3 (28.09.23)		Day-4 (29.09.23)		Day-5 (30.09.23)		Day-6 (01.10.23)		Day-7 (02.10.23)	
			I	D	I	D	I	D	I	D	I	D	I	D	I	D
1	BAITRANI	BT	NIL	NIL	NIL	NIL	NIL	NIL	H	ISOL	H	ISOL	H	ISOL	H	ISOL
2	LOWER BRAHMANI	LB	NIL	NIL	NIL	NIL	NIL	NIL	NIL	NIL	H	ISOL	H	ISOL	H	ISOL
3	UPPER BRAHMANI	UB	NIL	NIL	NIL	NIL	NIL	NIL	NIL	NIL	H	ISOL	H	ISOL	H	ISOL
4	BHURABALAN G	BB	NIL	NIL	NIL	NIL	NIL	NIL	NIL	NIL	H	ISOL	H	ISOL	H	ISOL
5	LOWER MAHANADI	LM	NIL	NIL	NIL	NIL	NIL	NIL	NIL	NIL	H	ISOL	H	ISOL	H	ISOL
6	NAGAVALI	NV	NIL	NIL	NIL	NIL	NIL	NIL	NIL	NIL	NIL	NIL	NIL	NIL	NIL	NIL
7	RUSHIKULIYA	RK	NIL	NIL	NIL	NIL	NIL	NIL	NIL	NIL	NIL	NIL	H	ISOL	H	ISOL
8	SUBERNAREK HA	SR	NIL	NIL	NIL	NIL	NIL	NIL	NIL	NIL	H	ISOL	H	ISOL	H	ISOL
9	UPPER MAHANADI	UM	NIL	NIL	NIL	NIL	NIL	NIL	NIL	NIL	NIL	NIL	H	ISOL	H	ISOL
10	VAMSDHARA	VD	NIL	NIL	NIL	NIL	NIL	NIL	NIL	NIL	NIL	NIL	NIL	NIL	H	ISOL

Spatial Distribution		
DRY	Dry	No station reported rainfall
ISOL	One or two places	25% or less number of stations recorded rainfall 2.5 mm
SCT	At a few places	26%-50% number of stations recorded rainfall 2.5 mm
FWS	At many places	51%-75% number of stations recorded rainfall 2.5 mm
WS	At most places	76%-100% number of stations recorded rainfall 2.5 mm

Intensity					
M.Dry	NIL	0 cm	VL	Very Light Rainfall	Trace
L	Light Rainfall	Upto 1 cm	M	Moderate Rainfall	2-6 cm
H	Heavy Rainfall	7-11 cm	VH	Very Heavy rainfall	12-20 cm
EH	Extremely Heavy Rainfall	21 cm or more			
ExH	Exceptionally Heavy Rainfall	When the amount is a value near about the highest recorded rainfall at or near the station for the month or season. However, this term will be used only when the actual rainfall amount exceeds 12 cm.			

4) River Sub-basin-wise Probabilistic QPF

Basin Name	Sub-basin Name	QPF Probability (%)																																									
		Day-1 (26.09.2023) (QPF categories)					Day-2 (27.09.2023) (QPF categories)					Day-3 (28.09.2023) (QPF categories)					Day-4 (29.09.2023) (QPF categories)					Day-5 (30.09.2023) (QPF categories)					Day-6 (01.10.2023) (QPF categories)					Day-7 (02.10.2023) (QPF categories)											
		0	0.1-10	11-25	26-50	51-100	>100	0	0.1-10	11-25	26-50	51-100	>100	0	0.1-10	11-25	26-50	51-100	>100	0	0.1-10	11-25	26-50	51-100	>100	0	0.1-10	11-25	26-50	51-100	>100	0	0.1-10	11-25	26-50	51-100	>100	0	0.1-10	11-25	26-50	51-100	>100
BAITRANI	B T	50-75	5-25	5-25	5-25	5-25	5-25	5-25	5-25	5-25	5-25	5-25	5-25	5-25	5-25	5-25	5-25	5-25	5-25	5-25	5-25	5-25	5-25	5-25	5-25	5-25	5-25	5-25	5-25	5-25	5-25	5-25	5-25	5-25	5-25	5-25	5-25	5-25	5-25	5-25	5-25	5-25	5-25
LOWER BRAHMANI	L B	5-25	5-25	5-25	5-25	5-25	5-25	5-25	5-25	5-25	5-25	5-25	5-25	5-25	5-25	5-25	5-25	5-25	5-25	5-25	5-25	5-25	5-25	5-25	5-25	5-25	5-25	5-25	5-25	5-25	5-25	5-25	5-25	5-25	5-25	5-25	5-25	5-25	5-25	5-25	5-25	5-25	5-25
UPPER BRAHMANI	U B	5-25	5-25	5-25	5-25	5-25	5-25	5-25	5-25	5-25	5-25	5-25	5-25	5-25	5-25	5-25	5-25	5-25	5-25	5-25	5-25	5-25	5-25	5-25	5-25	5-25	5-25	5-25	5-25	5-25	5-25	5-25	5-25	5-25	5-25	5-25	5-25	5-25	5-25	5-25	5-25	5-25	5-25
BHURABALANG	B B	5-25	5-25	5-25	5-25	5-25	5-25	5-25	5-25	5-25	5-25	5-25	5-25	5-25	5-25	5-25	5-25	5-25	5-25	5-25	5-25	5-25	5-25	5-25	5-25	5-25	5-25	5-25	5-25	5-25	5-25	5-25	5-25	5-25	5-25	5-25	5-25	5-25	5-25	5-25	5-25	5-25	5-25
LOWER MAHANADI	L M	5-25	5-25	5-25	5-25	5-25	5-25	5-25	5-25	5-25	5-25	5-25	5-25	5-25	5-25	5-25	5-25	5-25	5-25	5-25	5-25	5-25	5-25	5-25	5-25	5-25	5-25	5-25	5-25	5-25	5-25	5-25	5-25	5-25	5-25	5-25	5-25	5-25	5-25	5-25	5-25	5-25	5-25
NAGAVALI	N V	5-25	5-25	5-25	5-25	5-25	5-25	5-25	5-25	5-25	5-25	5-25	5-25	5-25	5-25	5-25	5-25	5-25	5-25	5-25	5-25	5-25	5-25	5-25	5-25	5-25	5-25	5-25	5-25	5-25	5-25	5-25	5-25	5-25	5-25	5-25	5-25	5-25	5-25	5-25	5-25	5-25	5-25
RUSHIKULIYA	R K	5-25	5-25	5-25	5-25	5-25	5-25	5-25	5-25	5-25	5-25	5-25	5-25	5-25	5-25	5-25	5-25	5-25	5-25	5-25	5-25	5-25	5-25	5-25	5-25	5-25	5-25	5-25	5-25	5-25	5-25	5-25	5-25	5-25	5-25	5-25	5-25	5-25	5-25	5-25	5-25	5-25	5-25
SUBERNAREKHA	S R	5-25	5-25	5-25	5-25	5-25	5-25	5-25	5-25	5-25	5-25	5-25	5-25	5-25	5-25	5-25	5-25	5-25	5-25	5-25	5-25	5-25	5-25	5-25	5-25	5-25	5-25	5-25	5-25	5-25	5-25	5-25	5-25	5-25	5-25	5-25	5-25	5-25	5-25	5-25	5-25	5-25	5-25
UPPER MAHANADI	U M	5-25	5-25	5-25	5-25	5-25	5-25	5-25	5-25	5-25	5-25	5-25	5-25	5-25	5-25	5-25	5-25	5-25	5-25	5-25	5-25	5-25	5-25	5-25	5-25	5-25	5-25	5-25	5-25	5-25	5-25	5-25	5-25	5-25	5-25	5-25	5-25	5-25	5-25	5-25	5-25	5-25	5-25
VAMSDHARA	V D	5-25	5-25	5-25	5-25	5-25	5-25	5-25	5-25	5-25	5-25	5-25	5-25	5-25	5-25	5-25	5-25	5-25	5-25	5-25	5-25	5-25	5-25	5-25	5-25	5-25	5-25	5-25	5-25	5-25	5-25	5-25	5-25	5-25	5-25	5-25	5-25	5-25	5-25	5-25	5-25	5-25	5-25



5) Station-wise significant rainfall recorded at 0830 hrs IST of today

S. NO.	NAME OF SUB-BASIN	NAME OF STATION AND RAINFALL (≥ 55.0 MM.)
	UPPER MAHANADI	GOPALPUR(57.8)
	LOWER MAHANADI	ALIPINGAL(69.4),NARLA(68)
	BHURABALANG	BARIPADA(IMD)(58)

6) River Sub-basin-wise observed Average Areal Precipitation (AAP) of today

S. No.	Basin Name	Sub-basin Name	AAP (mm)
1	BAITRANI	BT	4.5
2	LOWER BRAHMANI	LB	4.2
3	UPPER BRAHMANI	UB	3.5
4	BHURABALANG	BB	10.0
5	LOWER MAHANADI	LM	4.9
6	NAGAVALI	NV	8.9
7	RUSHIKULIYA	RK	2.6
8	SUBERNAREKHA	SR	6.0
9	UPPER MAHANADI	UM	4.6
10	VAMSDHARA	VD	3.7

(DUTY OFFICER)
for Scientist-F & Head
FLOOD MET.OFFICE
M.C Bhubaneswar

RAINFALL FOR PAST 24 HRS ENDING AT 0830 HRS OF DATE

Date:-26.09.2023

Sl No	Name of Stations	Rainfall (in mm)
UPPER MAHANADI		
1	AMBABHONA	0.0
2	ANDHIARKHOR	0.0
3	BAIKUNTHAPUR	0.0
4	BAMNIDIHI	16.2
5	BANGODAM	0.0
6	BARAGAON	3.0
7	BASANTAPUR	0.0
8	BORANDA	0.0
9	DEOGAON (IRRI)	0.0
10	DEOGAON (CWC)	1.4
11	DHARAMJAYGARH	0.0
12	GHATORA	34.8
13	HEMGIRI	3.0
14	JAMADARPALLI	0.0
15	JAMANKIRA	0.0
16	JHARSUGUDA (IMD)	29.2
17	KORBA	0.0
18	KUCHINDA	0.0
19	KURUBHATTA	0.0
20	KELO	24.8
21	MANENDRAGARH	0.0
22	MAHULPALI	0.0
23	NAWAPARA	0.0
24	LAIKERA	0.0
25	Gundardehi	1.4
26	Doundi	9.0
27	Gurur	1.8
28	DONDILOHARA	11.4
29	BALOD	3.5
30	PALLARI/PALARI	0.0
31	BALODA BAZAR	1.5
32	Kasdole	0.0
33	Bilaigarh	0.0
34	Bhatapara	1.0
35	Darbha	0.0
36	Saja	1.3
37	Berla	0.0
38	Nawagarh	0.0
39	Than Khamaria	4.5
40	BEMETARA	0.0
41	Masturi	10.8
42	Bilha	4.0
43	Kota	8.6
44	Takhatpur	0.0
45	BILASPUR	0.0
46	Kurud	4.0
47	Nagari	0.0
48	Magarlod	0.0
49	DHAMTARI	2.9
50	Patan	7.0
51	Dhamdha	0.0
52	DURG	0.0
53	DEOBHOG	4.9
54	GARIABUND	0.0
55	Chhura	0.0
56	Mainpur	1.3
57	Akaltara	12.5
58	Pamgarh	7.8
59	Baloda	2.1
60	Jaijaipur	0.7
61	Malkharoda	0.0
62	Dhabhara	2.4
63	SAKTI	43.6
64	JANJGIR	7.4
65	CHAMPA	11.0
66	Manora	15.4
67	Bagicha	1.0
68	Duldula	0.0
69	Kunkuri	4.5
70	Kansabel	8.3
71	Tapkara	0.0

Sl No	Name of Stations	Rainfall (in mm)
UPPER MAHANADI		
72	PATHALGAON	1.3
73	JASHPURNAGAR	0.4
74	Bodla	6.6
75	Sahaspurlohara	5.8
76	Pandaria	1.8
77	KAWARDHA	40.5
78	Charama	7.3
79	Nerharpur	0.0
80	Poudi Uparora	0.0
81	Kartala	0.0
82	PALI	1.6
83	KATGHORA	0.0
84	Sonhat	0.0
85	Khadgava	0.0
86	Pithora	0.0
87	Bagbahara	0.0
88	Basana	4.0
89	MAHASAMUND	0.0
90	SARAI PALI	0.0
91	Patharia	1.0
92	Lormi	0.0
93	MUNGELI	0.0
94	Kharsiya	0.0
95	Lailunga	6.6
96	Pusaur	26.1
97	Baramkela	0.0
98	Tamnar	8.5
99	SARANGARH	0.0
100	RAIGARH	13.5
101	GHARGHODA	0.0
102	MANA-RAIPUR-AP	0.0
103	ARANG	0.0
104	Tilda	0.0
105	Abhanpur	7.0
106	Chhui khadan	1.0
107	Khairagarh	1.5
108	Chhuria	25.0
109	RAJNANDGAON	7.0
110	DONGARGARH	8.3
111	DONGARGAON	37.2
112	GANDAI	0.0
113	AMBAGARH CHOWKI	19.4
114	Premnagar	0.0
115	Ramanujnagar	0.0
116	Batoli	0.0
117	Sitapur	0.0
118	Lundra	0.0
119	KOLABIRA	1.0
120	PARMANPUR	8.6
121	PENDRA RD (CWC)	0.0
122	RAIPUR(IMD)	0.3
123	RAIPUR (CWC)	0.0
124	RAJIM	0.0
125	RAMPUR	0.0
126	SANKARA	0.0
127	SEORINARAYAN	0.0
128	SIMGA	0.0
129	SUNDERGARH (IMD)	20.6
130	SUND-RH (CWC)	5.2
131	SURAJGARH	23.2
132	THETTANG	12.2
133	GOPALPUR	57.8
134	ZONDRA	0.0
135	BALISANKRA	0.0
136	BAMRA	4.4
137	LEPHRIPARA	0.0
138	KUTRA	0.0
139	TANGARPALI	0.0
140	KIRMIRA	5.0
141	LAKHANPUR	0.0

Sl No	Name of Stations	Rainfall (in mm)
LOWER MAHANADI		
1	SATYABADI	0.0
2	DERABIS	0.0
3	JHARBANDH	0.0
4	GAISILETE	0.0
5	PHIRINGIA	7.4
6	ALIPINGAL	69.4
7	ARMPUR	5.8
8	ATHAGARH	0.0
9	ATHAMALIK	0.0
10	BALIGUDA	4.0
11	BANPUR	0.0
12	BARGARH	0.0
13	BARMUL	48.8
14	BELGAON	0.0
15	BHAWANIPATNA(IMD)	0.0
16	BHUBANESWAR (IMD)	0.3
17	BIJEPUR	0.0
18	BINIKA	16.2
19	BOLANGIR (IMD)	0.0
20	BOUDA GARH	0.0
21	BURLA (CWC)	0.0
22	BURLA (IRRI)	0.0
23	CUTTACK (IMD)	1.2
24	CHILIKA	0.0
25	DASHPALLA	37.8
26	DUNGURIPALI	3.0
27	GOP	0.0
28	HARABHANGA	4.0
29	HIRAKUD (IMD)	0.0
30	JAIPATNA	0.0
31	JUNAGARH	0.0
32	KAKATPUR	0.0
33	KALINGA	0.0
34	KANAS	0.0
35	KANTAMAL (BDO)	0.0
36	KANTAMAL (CWC)	0.0
37	KENDRAPARA	2.0
38	KENDRAPARA (PTO)	0.0
39	KESINGA	38.8
40	KHANDAPADA* (BDO)	2.0
41	KHANDAPADA (CWC)	3.2
42	KHARIAR	0.0
43	KHAIRMAL (IRR)	0.0
44	KHAIRAMAL (CWC)	0.0
45	KOMNA	0.0
46	M. RAMPUR	19.0
47	MUNDALI	0.0
48	NARAJ	0.4
49	NARASINGHPUR	5.0
50	NAYAGARH	0.0
51	NIMAPARA	0.0
52	PADAMPUR	0.0
53	PADMABATI	0.0
54	PAIKAMAL	0.0
55	PARADEEP (IMD)	0.0
56	G.UDAYGIRI	0.0
57	PATNA GARH	8.0
58	PATAMUNDAI	4.0
59	PHULBANI (IMD)	1.6
60	PHULBANI (CWC)	2.0
61	PIPLI	2.0
62	PURI (IMD)	0.0
63	RAIRAKHOL	14.0
64	R.K NAGAR	14.2
65	RANPUR	3.4
66	SALBHATTA	1.0
67	SAMBALPUR (IMD)	0.0
68	SOHELA	0.0
69	SONEPUR	0.0
70	TANGI	0.0
71	TIKABALI	2.0

Sl No	Name of Stations	Rainfall (in mm)
LOWER MAHANADI		
72	TIKARAPARA	37.2
73	TITLA GARH (IMD)	1.0
74	KOKSARA	0.0
75	TUREIKELA	0.0
76	KALAMPUR	0.0
77	SINAPALI	0.0
78	BODEN	2.0
79	LOISINGHA	0.0
80	TIRTOL	0.0
81	SAINTALA	3.0
82	NARLA	68.0
83	AGALPUR	0.0
84	RAIKIA	0.0
85	B.M.PUR	0.0
86	BARPALI	0.0
87	ATTABIRA	0.0
88	BHATALI	0.0
89	TH. RAMPUR	0.0
90	GUDVELA	10.0
91	DEOGAON	0.0
92	BANGAMUNDA	0.0
93	BIRIDI	0.0
94	NAUGAON	0.0
95	GOLAMUNDA	22.4
96	CHAKAPAD	3.0
97	KHAJURIPADA	8.8
98	MOHAKALAPADA	27.0
99	JATNI	0.0
100	BEGUNIA	19.0
101	BHAPUR	0.0
102	DHANKAUDA	0.0
103	JAGATSingHPUR(PTO)	27.1
104	KHORDHA(PTO)	3.0
105	CHANDAHANDI	0.0
106	JHORIGAM	4.6
107	DHARMAGARH	13.0
108	BELPADA	5.0
109	KHAPRAKHOL	0.0
110	TARVA	0.0
111	K NUAGAON	0.0
112	JUJUMURA	0.0
113	ULLUNDA	21.0
114	KARLAMUNDA	14.0
115	BOLAGARH	0.0
116	GANIA	0.0
117	BANKI	0.0
118	TIGIRIA	0.0
119	ASTARANGA	0.0
120	BRAHMAGIRI	0.0
121	KRISHNAPRASAD	0.0
122	KANTAPADA	27.0
123	MAHANGA	0.0
124	NIALI	0.0
125	NISCHINTAKOILI	0.0
126	SALEPUR	0.0
127	BALIKUDA	0.0
128	RAGHUNATHPUR	14.0
129	GARADAPUR	0.0
130	MARSAGHAI	0.0
131	BALIPATNA	15.0
132	KUJANGA	0.0
133	NUAUGAON	0.0
134	ODAGAON	6.8
135	BASANA	4.0
136	DEOBHOG	4.9

RAINFALL FOR PAST 24 HRS ENDING AT 0830 HRS OF DATE

Date:-26.09.2023

SI No	Name of Stations	Rainfall (in mm)
UPPER BRAHMANI		
1	MANORA	15.4
2	LAHUNIPARA	0.0
3	PALLAHARA	0.0
4	PANPOSH	0.0
5	RAJGANGA PUR	0.0
6	BARKOTE	7.6
7	BONAI	0.0
8	DEOGARH	0.0
9	MANDIRADAM	0.0
10	TENSA	0.0
11	LATHIKATA	0.0
12	JODA	0.0
13	GURUNDIA	0.0
14	PALKOT	0.0
15	RAIDIH	0.0
16	KURU	4.0
17	LOHARDAGA	8.4
18	MANDAR	0.0
19	KOLEBIRA	0.0
20	KURDEG	0.0
21	SIMDEGA	0.0
22	JASHPURNAGAR	0.4
23	RAURKELA(Airport)	0.1
LOWER BRAHMANI		
1	REAMAL	0.0
2	RENGALI	0.0
3	ALTUMA	0.0
4	ANGUL (IMD)	0.0
5	BATAGAON	TR
6	CHHENDIPADA	0.0
7	DHENKANAL	0.0
8	DHENKANAL (PTO)	0.0
9	HINDOL	31.2
10	JENAPUR	0.0
11	KAMAKHYA NGR	0.0
12	NAKTIDEUL	7.0
13	SUKINDA	0.0
14	TALCHER	0.0
15	TELKOI	13.8
16	KANKADAHAD	9.6
17	JAJPUR	6.0
18	JAJPUR (PTO)	4.0
19	RAJ KANIKA	0.0
20	AUL	0.0
21	RAJNAGAR	2.0
22	BANARPAL	0.0
23	KANIHA	5.2
24	PARJANG	0.0
25	GONDIA	0.0
26	BHUBAN	4.0
27	DANAGADI	0.0
28	KOREI	0.0
29	CHANDIKHOL	0.0
30	BARI	21.0
31	BINJHARPUR	7.0

SI No	Name of Stations	Rainfall (in mm)
BAITARANI		
1	BONTH	0.0
2	AKHUAPADA	1.6
3	ANANDAPUR	0.0
4	CHAMPUA	0.0
5	CHANDBALI (IMD)	0.0
6	DAITARI	0.0
7	GHATGAON	10.6
8	JHUMPURA	0.0
9	JOSHIPUR	0.0
10	KARANJIA	15.0
11	KEON-GARH (IMD)	3.6
12	KEONJHAR (CWC)	9.4
13	SWAMPATNA	0.0
14	THAKUR-DA(BDO)	1.0
15	THAKUR-DA (CWC)	0.0
16	SAHARPADA	0.0
17	KAPTIPADA	9.0
18	HATADIHI	0.0
19	BHADRAK	2.6
20	BHANDARIPOKHARI	0.0
21	BANSPAL	30.2
22	GHASIPURA	0.0
23	SUKRULI	0.0
24	RARUANA	0.0
25	DHAMNAGAR	0.0
26	TIHIDI	0.0
27	HARICHANDANPUR	7.0
NAGAVALI		
1	K.SINGHPUR	0.0
2	RAYAGADA	10.0
3	SANKIL RD BRIDGE	NR
4	JANJHAVATI RDB	NR
5	JAGGAGUDA	NR
6	SRIKAKULAM	0.0
7	BANDHUGAN	42.0
8	SALUR	20.6
9	KOLNARA	11.4
10	Komarada	0.0
11	Jiyyammavalasa	0.0
12	Garugubilli	0.0
13	Parvathipuram	0.0
14	Bobbili	0.0
15	Therlam	0.0
16	Pusapatirega	0.0
17	Denkada	38.8
18	Vizianagaram	40.8
19	Vepada	9.8

SI No	Name of Stations	Rainfall (in mm)
RUSHIKULYA		
1	BUGUDA	0.0
2	ASKA	0.0
3	BERHAMPUR	0.0
4	BHANJANAGAR	0.0
5	CHHATRAPUR	0.0
6	DARINGIBADI	NR
7	GOPALPUR (IMD)	0.0
8	MADHABARIDA	0.0
9	PUSOTTAMPUR	0.0
10	DIGAPAHANDI	17.0
11	JAGANNATHPRASAD	0.0
12	SORADA	0.0
13	POLASARA	0.0
14	KODALA	0.0
15	RANGEILUNDA	0.0
16	KUKUDAHANDI	0.0
17	PATRAPUR	0.0
18	SANKHEIMUNDI	0.0
19	DHARAKOTE	0.0
20	SHERAGADA	0.0
21	GANJAM	0.0
22	BELAGUNTHA	0.0
23	HINJILI	0.0
VANSADHARA		
1	AMBADOLA	0.0
2	BISSAM CUTTACK	0.0
3	GOTTA BARRAGE	0.0
4	GUDARI	0.0
5	GUNUPUR	2.4
6	KALINGA-NAM (IMD)	0.0
7	KASHINAGAR	0.0
8	KOTAGARH	0.0
9	KOTRAGUDA	0.0
10	MAHENDRAGARH	0.0
11	MOHANA	15.0
12	PARAKHEMUNDI	0.0
13	R.GUDA	0.0
14	NUAGADA	0.0
15	MUNIGUDA	1.6
16	R.UDAYAGIRI	0.0
17	LANJIGARH	0.0
18	NELIAPUTY	NR
19	SIRJHOLY	NR
20	GUMMA	0.0
21	GOSANI	0.0
22	CHADRAPUR	0.0
23	Balajipeta	31.2

SI No	Name of Stations	Rainfall (in mm)
SUBERNAREKHA		
1	SARASAKANA	0.0
2	BHOGARAI	18.0
3	FEKOGHAT	12.2
4	GHATSILA	1.0
5	JALESWAR	0.0
6	JAMSEDPUR (IMD)	0.0
7	JAMSEDPUR (CWC)	3.6
8	JAMSOLAGHAT	12.2
9	RAIRANG PUR	0.0
10	RAJGHAT	0.0
11	RANCHI	0.0
12	TIRING	0.0
13	BIJATALA	0.0
14	KUSUMI	11.0
15	JAMDA	0.0
16	ARKI	34.0
17	ICAR NAMKUM	0.0
18	ORMANJHI	4.8
19	CHANDIL	0.0
20	KHARSEMA	9.4
21	NIMDIH	0.0
22	CHAIBASA	0.0
23	CHAKRADHARPUR	6.2
24	BAHALDA	0.0
BUDHABALANGA		
1	BALASORE (IMD)	0.0
2	BALASORE (CWC)	0.0
3	BALIMUNDALI	33.8
4	BANGRIPOSHI	37.6
5	BARIPADA (IMD)	58.0
6	BARIPADA (CWC)	28.8
7	CHANDANPUR	5.0
8	JAIPUR	26.0
9	NAWANA	35.0
10	NH-5, GOVINDPUR	7.0
11	NILGIRI	0.0
12	SORO	33.0
13	BETANATI	0.0
14	UDALA	11.0
15	BAHANAGA	7.0
16	KHAIRA	0.0
17	MURUDA	0.0
18	SULIAPADA	13.0
19	G.B.NAGAR	19.0
20	REMUNA	0.0
21	SAMAKHUNTA	5.0
22	BASUDEVPUR	0.0
23	CHANDUA(KULIANA)	3.0
24	RASAGOVINDAPUR	0.0
25	OUPADA	0.0

Source:-Met Centre Bhubaneswar

BLOCKWISE RAINFALL FOR PAST 24 HRS ENDING AT 0830 HRS OF DATE

Date:26.09.2023

SI No	Name of Stations	Rainfall (in mm)	SI No	Name of Stations	Rainfall (in mm)	SI No	Name of Stations	Rainfall (in mm)	SI No	Name of Stations	Rainfall (in mm)	SI No	Name of Stations	Rainfall (in mm)
1. ANGUL			8. DEOGARH			4 Madanpur Rampur 19.0			21. MALKANGIRI			27. RAYAGADA		
1	Angul	0.0	1	Barkote	7.6	5	Narla	68.0	1	Malkangiri	0.0	1	Rayagada	22.0
2	Banarpal	0.0	2	Deogarh	0.0	6	Naljar	0.0	2	Mathili	0.0	2	Kolnara	11.4
3	Chhendipada	0.0	3	Reamal	0.0	7	Thuamul Rampur	0.0	3	Khoirput	1.0	3	Kalyansingpur	0.0
4	Talcher	0.0	Avg 2.5			8	Dharmagarh	13.0	4	Chitrakonda (K.Gumma)	0.0	4	Kashipur	3.0
5	Kaniha	5.2	9. DHENKANAL			9	Junagarh	0.0	5	Korukonda	0.0	5	Gonupur	0.0
6	Athamalik	0.0	1	Dhenkanal	0.0	10	Kalampur	0.0	6	Kalimela	0.0	6	Padmapur	0.2
7	Kishorenagar	14.2	2	Gondia	0.0	11	Jayapatna	0.0	7	Podia	0.0	7	Gudari	0.0
8	Pallahara	0.0	3	Odapada	0.0	12	Kokasara	0.0	Avg 0.1			8	Ramanagada	0.0
Avg 2.4			4	Hindol	31.2	13	Golamunda	22.4	22. MAYURBHANJ			9	Bissam Cuttack	0.0
2. BALASORE			5	Kamakhyanagar	0.0	Avg 13.5			1	Samakhunta	5.0	10	Muniguda	1.6
1	Bhograi	18.0	6	Bhubang	4.0	16. KANDHAMAL			2	Badasahi	1.0	11	Chandrapur	0.0
2	Basta	0.0	7	Parjang	0.0	1	Baliguda	4.0	3	Betanati	0.0	Avg 3.5		
3	Jaleswar	0.0	8	Kankadahad	9.6	2	Chakapad	3.0	4	Morda	0.0	28. SAMBALPUR		
4	Baliapal	26.0	Avg 5.6			3	Daringibadi	0.0	5	Rasgovindapur	0.0	1	Jujumura	0.0
5	Balasure	0.0	10. GAJAPATI			4	G.Udayagiri	0.0	6	Kuliana	3.0	2	Dhankauda	0.0
6	Remuna	0.0	1	Kasinagar	0.0	5	Khajuripada	8.8	7	Sarasakana	0.0	3	Rengali	0.0
7	Nilagiri	0.0	2	Paralakhemundi	0.0	6	Kotagarh	0.0	8	Suliapada	13.0	4	Maneswar	0.0
8	Soro	33.0	3	Rayagada	0.0	7	Nuagaon	0.0	9	Bangriposi	37.6	5	Kuchinda	0.0
9	Bahanaga	7.0	4	Gumma	0.0	8	Phiringia	7.4	10	Baripada	47.0	6	Jamankira	0.0
10	Simulia	0.0	5	Nuagada	0.0	9	Phulbani	1.6	11	Khunta	18.0	7	Bamra	4.4
11	Khaira	0.0	6	R.Udaygiri	0.0	10	Raika	0.0	12	Gopabandhunagar	19.0	8	Rairakhol	14.0
12	Oupada	0.0	7	Mohana	14.2	11	Tikabali	2.0	13	Udala	11.0	9	Naktideul	7.0
Avg 7.0			8	Gosani	0.0	12	Tunudibandh	23.8	14	Kaptipada	9.0	Avg 2.8		
3. BARGARH			Avg 1.8			Avg 4.2			15	Besoi	1.0	29. SUBARNAPUR		
1	Ambabhona	0.0	11. GANJAM			17. KENDRAPARA			16	Bijatata	0.0	1	Sonepur	0.0
2	Attabira	0.0	1	Chhatrapur	0.0	1	Kendrapara	2.0	17	Rairangapur	0.0	2	Binika	16.2
3	Bargarh	0.0	2	Ganjam	0.0	2	Derabis	0.0	18	Kusumi	11.0	3	Tarbha	0.0
4	Barpali	0.0	3	Purusottampur	0.0	3	Marshaghai	0.0	19	Jamda	0.0	4	Dunguripali	3.0
5	Bhatli	0.0	4	Kabisuryanagar	0.0	4	Mohakalpara	27.0	20	Bahalda	0.0	5	Birmaharajpur	0.0
6	Bhedden	1.0	5	Polasara	0.0	5	Garadapur	0.0	21	Tiring	0.0	6	Ullunda	21.0
7	Bijepur	0.0	6	Kodala	0.0	6	Pattamundai	4.0	22	Joshipur	0.0	Avg 6.7		
8	Gaisilet	0.0	7	Khalikot	0.0	7	Aul	0.0	23	Karanja	15.0	30. SUNDARGARH		
9	Jharbandh	0.0	8	Hinjilicut	0.0	8	Rajnagar	2.0	24	Thakurmunda	1.0	1	Hemgir	3.0
10	Padampur	0.0	9	Rangeilunda	0.0	9	Rajkanika	0.0	25	Sukuruli	0.0	2	Lephripura	0.0
11	Paikmal	0.0	10	Kukudakhandi	0.0	Avg 3.89			26	Raruana	0.0	3	Tangarpali	0.0
12	Sohela	0.0	11	Chikiti	0.0	18. KEONJHAR			Avg 7.4			4	Sundargarh	20.6
Avg 0.1			12	Patrapur	0.0	1	Keonjhar	4.8	23. NAWARANGHPUR			5	Subdega	0.0
4. BHADRAK			13	Sanakhemundi	0.0	2	Banspal	30.2	1	Nawarangpur	7.0	6	Balisankara	0.0
1	Bhadrak	2.6	14	Digapahandi	17.0	3	Telkoi	13.8	2	Nandahandi	2.0	7	Bargaon	3.0
2	Bhandaripokhari	0.0	15	Bhanjanagar	0.0	4	Patna	0.0	3	Tentulikhunti	0.0	8	Kutra	0.0
3	Basudevpur	0.0	16	Belaguntha	0.0	5	Saharpada	0.0	4	Papadahandi	2.0	9	Rajgangpur	0.0
4	Bonth	0.0	17	Jagannathprasad	0.0	6	Ghatgaon	10.6	5	Kosagumuda	0.0	10	Kuarmunda	0.0
5	Chandbali	0.0	18	Buguda	0.0	7	Harichandanpur	7.0	6	Dabugaon	53.0	11	Nuagaon	0.0
6	Dhamnagar	0.0	19	Aska	0.0	8	Anandapur	0.0	7	Umerkote	0.0	12	Bisra	0.0
7	Tihidi	0.0	20	Dharakote	0.0	9	Ghasipura	0.0	8	Raighar	5.2	13	Lathikata	0.0
Avg 0.4			21	Sheragada	0.0	10	Hatadihi	0.0	9	Jharigaon	4.6	14	Bonai	0.0
5. BALANGIR			22	Sorada	0.0	11	Champua	0.0	10	Chandahandi	0.0	15	Lahunipara	0.0
1	Balangir	0.0	Avg 0.8			12	Joda	0.0	Avg 7.4			16	Gurundia	0.0
2	Puintala	8.0	12. JAGATSingHPUR			13	Jhumpura	0.0	24. NAYAGARH			17	Koira	63.0
3	Gudvella	10.0	1	Jagatsinghpur	36.4	Avg 5.1			1	Bhapur	0.0	Avg 5.3		
4	Duduka	0.0	2	Biridi	0.0	19. KHORDHA			2	Daspalla	37.8			
5	Deogaon	0.0	3	Raghunathpur	14.0	1	Balianta	0.0	3	Gania	0.0			
6	Loisingha	0.0	4	Balikuda	0.0	2	Balipatna	15.0	4	Khandapara	2.0			
7	Patnagarh	8.0	5	Nuagaon	0.0	3	Bhubaneswar	0.0	5	Nayagarh	0.0			
8	Belpada	5.0	6	Tirtol	0.0	4	Jatani	0.0	6	Nuagaon	0.0			
9	Khaprakhol	0.0	7	Kujanga	0.0	5	Banapur	0.0	7	Odagaon	6.8			
10	Titilagarh	1.0	8	Erasama	0.0	6	Begunia	19.0	8	Ranpur	3.4			
11	Tureikela	0.0	Avg 6.3			7	Bolagarh	0.0	Avg 6.3					
12	Bangomunda	0.0	13. JAJPUR			8	Chilika	0.0	25. NUAPADA					
13	Muribahal	0.0	1	Jajpur	6.0	9	Khordha	0.0	1	Boden	2.0			
14	Saintala	3.0	2	Binjharpur	7.0	10	Tangi	0.0	2	Khariar	0.0			
Avg 2.5			3	Dasarathpur	0.0	Avg 3.4			3	Komna	0.0			
6. BOUDH			4	Korei	0.0	20. KORAPUT			4	Nuapada	0.0			
1	Boudh	0.0	5	Danagadi	0.0	1	Koraput	4.4	5	Sinapali	0.0			
2	Kantamal	0.0	6	Sukinda	0.0	2	Lamataput	0.0	Avg 0.4					
3	Harabhanga	4.0	7	Rasulpur	0.0	3	Pottangi	1.0	26. PURI					
Avg 1.3			8	Dharmasala	0.0	4	Bandhugaon	42.0	1	Astarang	0.0			
7. CUTTACK			9	Badachana	0.0	5	Nandapur	19.0	2	Brahmagiri	0.0			
1	Athagarh	0.0	10	Bari	21.0	6	Dasmantpur	2.0	3	Delang	0.0			
2	Banki-Dampada	0.0	Avg 3.4			7	Narayanpatna	2.0	4	Gop	0.0			
3	Barang	8.0	14. JHARSUGUDA			8	Laxmipur	7.6	5	Kakatpur	0.0			
4	Badamba	0.0	1	Jharsuguda	1.0	9	Similiguda	24.0	6	Kanas	0.0			
5	Cuttack Sadar	4.0	2	Kolabira	1.0	10	Jeypore	6.4	7	Krushnaprasad	0.0			
6	Kantapada	27.0	3	Laikera	0.0	11	Kotpad	0.0	8	Nimapara	0.0			
7	Mahanga	0.0	4	Kirmira	5.0	12	Kundra	21.6	9	Pipili	2.0			
8	Niali	0.0	5	Lakhanpur	0.0	13	Borigumma	25.6	10	Puri	0.0			
9	Nischintakoili	0.0	Avg 1.4			14	Boipariguda	0.0	11	Satyabadi	0.0			
10	Narasingshpur	5.0	15. KALAHANDI			Avg 11.1			Avg 0.2					
11	Salepur	0.0	1	Bhabanipatna	0.0									
12	Tangi-Choudwar	0.0	2	Kesinga	38.8									
13	Tigiria	0.0	3	Karlamunda	14.0									
Avg 3.4														