

ISOHYETS

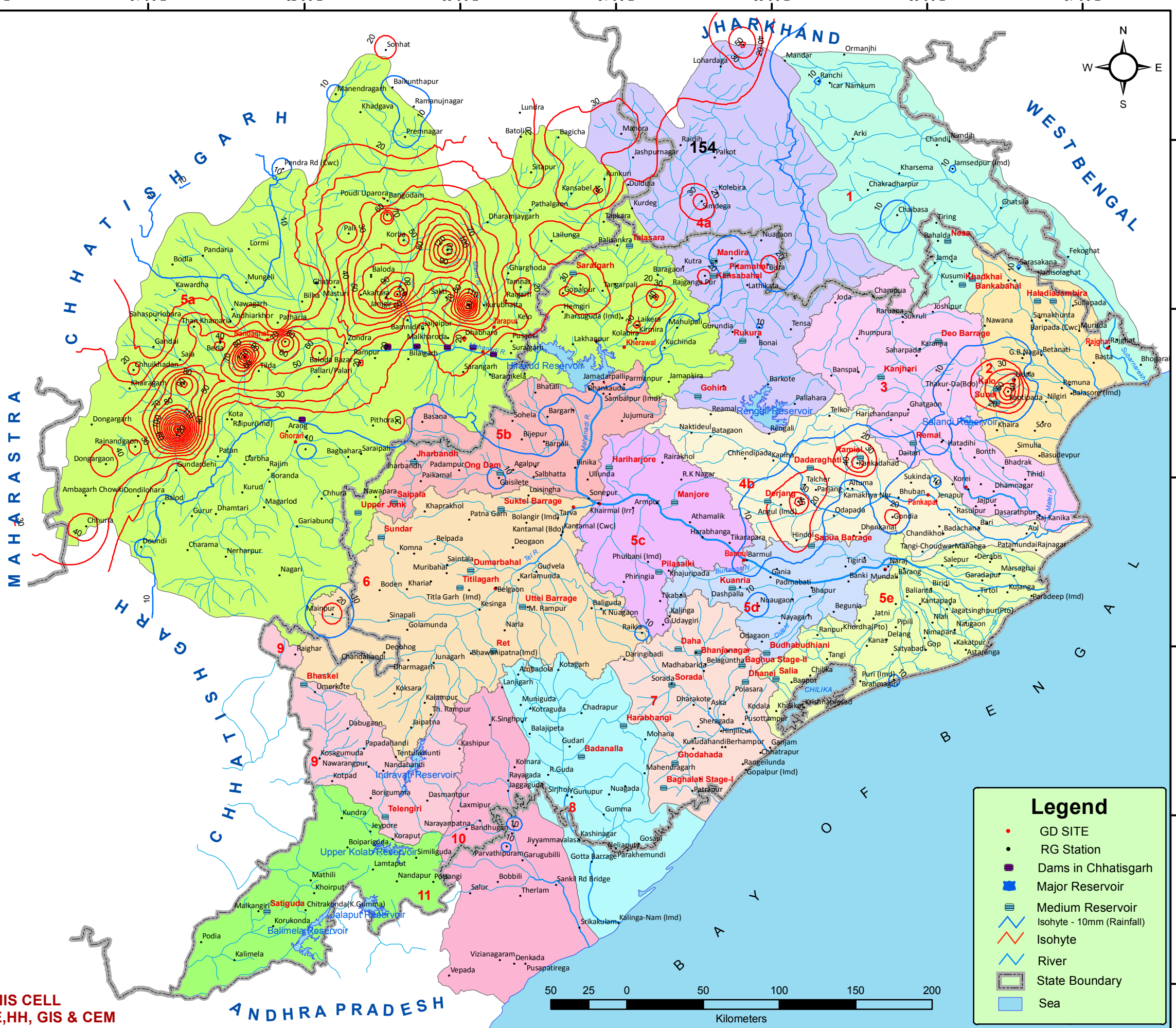
FOR PAST 24 HOURS ENDING AT 0830 HRS OF

23.09.2023

RAINFALL SOURCE STATIONS: IMD, SRC & CWC
BASIN AVG RAINFALL IN MM

Basin_code	SEP 21	SEP 22	SEP 23
1	13.13	15.22	3.57
2	11.52	7.90	7.25
3	23.26	5.54	3.34
4a	20.41	28.22	12.20
4b	18.72	11.88	9.37
5a	31.27	28.74	24.28
5b	27.71	6.70	6.61
5c	35.37	6.75	1.65
5d	26.25	15.45	5.87
5e	20.66	9.04	0.72
6	38.18	9.68	2.50
7	23.92	3.46	0.92
8	23.32	2.15	0.30
9	55.57	5.04	0.80
10	12.91	4.89	0.88
11	12.18	3.06	0.75

Basin	Basin name	Basin code
	SUBARNAREKHA	1
	BURHABALANGA BASIN	2
	BAITARANI BASIN	3
	UPPER BRAHMANI BASIN	4a
	LOWER BRAHMANI BASIN	4b
	UPPER MAHANADI,	5a
	MAHANADI (HIRAKUD - KHAIRMAL)	5b
	MAHANADI (KHAIRMAL - BARMUL)	5c
	MAHANADI (BARMUL - NARAJ)	5d
	MAHANADI DELTA	5e
	TEL BASIN	6
	RUSHIKULYA BASIN	7
	VANSHADHARA	8
	INDRABATI BASIN	9
	NAGAVALI BASIN	10
	KOLAB BASIN,	11



FMIS CELL
CE, HH, GIS & CEM

Legend	
	GD SITE
	RG Station
	Dams in Chhattisgarh
	Major Reservoir
	Medium Reservoir
	Isohyte - 10mm (Rainfall)
	Isohyte
	River
	State Boundary
	Sea

