



# Flood Bulletin, 2023

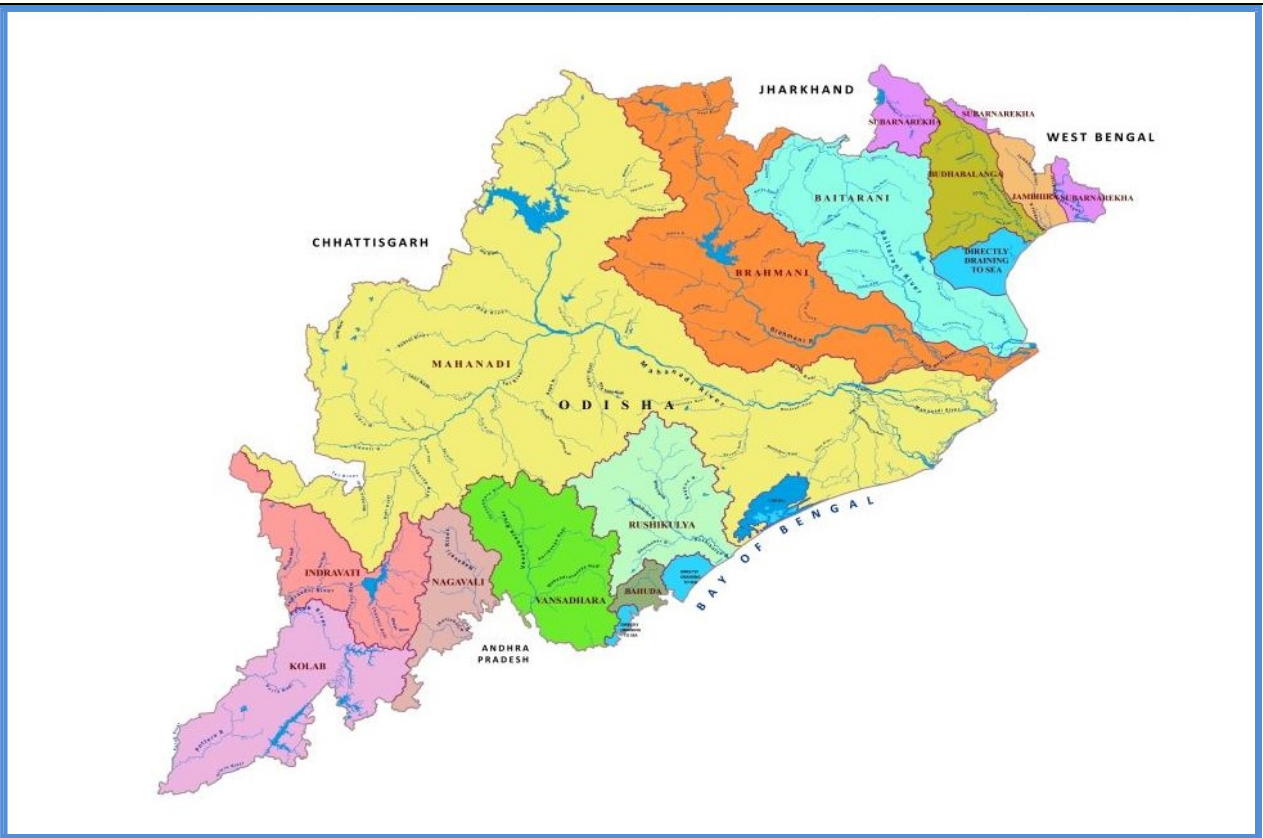
Government of Odisha

## Department of Water Resources

Volume No.136

Date: 14.10.2023

Time: 14:00Hr



### Contents

- Status of River Gauge
- Status of Reservoirs
- IMD Weather Bulletin
- River Discharge
- Rainfall Situation
- IMD Forecast

### Flood Cell

Office of the Engineer-in-Chief, Water Resources, Odisha  
Secha Sadan, Bhubaneswar  
Tel:0674-2395951,2395953e-Mail:[floodcelleicwr@gmail.com](mailto:floodcelleicwr@gmail.com)  
url: [dowr.odisha.gov.in](http://dowr.odisha.gov.in) & [dowrodisha.gov.in](http://dowrodisha.gov.in)

## Status of Gauge (in m)

Name of River	Gauge Site	Danger Level (DL)	Warning Level	Time (Hrs)	Present Level	Trend	(wrt DL)	Highest Recorded Level	
								Level	Date
Mahanadi	Khairmal	109.0	108.0	12:00	101.30	S	-7.70	108.31	19.09.08
	Tikarpara	-	-	12:00	56.85	S	-	74.98	30.08.82
	Naraj (IB)	26.41	25.41	12:00	22.41	S	-4.00	27.60	31.08.82
Kusabhadra	Nimapara	10.76	9.85	12:00	3.52	S	-7.24	11.60	31.08.82
Devi	Alipingala	11.76	10.85	12:00	2.54	F	-9.22	13.05	20.09.08
Brahmani	Panposh	178.42	177.51	12:00	171.87	S	-6.55	181.44	24.09.11
	Rengali	88.0	-	12:00	77.50	F	-10.50	92.25	18.08.75
	Talcher	62.91	-	12:00	54.81	R	-8.10	65.53	19.08.75
	Jenapur	23.0	22.0	12:00	19.02	S	-3.98	24.78	20.08.75
	Indupur	8.23	-	12:00	3.30	S	-4.93	-	-
Baitarani	Champua	376.41	375.33	12:00	371.79	F	-4.62	379.06	23.09.11
	Swampatna	311.1	-	12:00	305.34	S	-5.76	315.66	14.08.75
	Anandapur	38.36	37.44	12:00	33.11	R	-5.25	41.35	23.09.11
	Akhuapada	18.33	17.83	12:00	16.14	F	-2.19	21.95	16.08.60
Budhabalanga	Chandanpur	-	-	12:00	81.64	S	-	85.80	09.11.95
	Baripada	30.92	29.7	12:00	21.70	S	-9.22	34.82	13.10.13
	Balimundali	-	-	12:00	36.20	F	-	42.20	1995
	NH5-Govindapur	8.13	7.21	12:00	2.04	R	-6.09	9.67	12.10.73
Subarnarekha	Jamshedpur	123.5	122.5	12:00	116.06	R	-7.44	129.82	12.10.73
	Jamsolaghat	49.16	48.32	12:00	44.08	F	-5.08	56.91	03.09.78
	Rajghat	10.36	9.45	12:00	4.98	F	-5.38	12.69	19.06.08
Jalaka	Mathani Road Bridge	6.50	6.0	12:00	3.6	S	-2.90	7.31	22.09.21
Rushikulya	Sorada	81.99	80.99	12:00	77.74	S	-4.25	83.21	04.11.90
	Madhabarida	60.65	-	12:00	56.08	S	-4.57	61.44	18.10.99
	Purusottampur	16.84	15.84	12:00	11.79	S	-5.05	19.60	04.11.90
Vansadhara	Gudari	-	-	12:00	114.21	S	-	121.82	17.09.80
	Gunupur	84.0	83.0	12:00	80.45	S	-3.55	88.75	17.09.80
	Kashinagar	54.6	54.1	12:00	52.43	F	-2.17	58.93	18.09.80

## Status of Major Reservoirs

Name of the Reservoir	Name of the District	Dead Storage Level	FRL/ MWL	Reservoir Level	LS Available/ Live Storage Capacity (%)	Last Year (2022) R.L/ Live Storage Avl (%)	Inflow	Total Outflow	Gates Open (Nos)/ Trend
<b>1.Hirakud 12:00Hr</b>	Sambalpur	590.0 ft	630.0ft	629.54 ft	<u>4734.0 Mcum</u> 4822.83Mcum (98.2%)	<u>630.0 ft</u> 100.0%	24139.0 Cusec	36844.0 Cusec	00/98 Falling
<b>2.Rengali 09:00Hr</b>	Angul	109.72 m	<u>123.5 m</u> 125.4 m	123.79 m.	<u>351811.0 Ham</u> 341371.0 Ham (103.1%)	<u>123.2 m</u> 96.8%	449.92 Cumec	694.39 Cumec	00/27 Falling
<b>3.U. Indravati 06:00Hr</b>	Nabrangpur	625.0 m	<u>642 m</u> 643 m	637.88 m.	<u>101758.0 Ham</u> 148550.0 Ham (68.5%)	<u>639.6 m</u> 80.2%	76.98 Cumec	122.65 Cumec	00/12 Falling
<b>4.UpperKolab 08:00Hr</b>	Koraput	844.0 m	858.0 m	856.12 m.	<u>757.03 Mcum</u> 935.0 Mcum (81.0%)	<u>855.6 m</u> 75.7%	43.93 Cumec	54.88 Cumec	00/11 Falling
<b>5.Balimela 08:00Hr</b>	Malkangiri	1440.0 ft	<u>1516 ft</u> 1518 ft	1489.40 ft	<u>143063.0 Ham</u> 267600.0 Ham (53.5%)	<u>1482.6 ft</u> 43.5%	4097.0 Cusec	4097.24 Cusec	00/12 Falling
<b>6.Machhkund (Jalaput) 08:00Hr</b>	Malkangiri	2685.0 ft	2750.0 ft	2733.15 ft	<u>51595.0 Ham</u> 89254.7 Ham (57.8%)	<u>2739.7 ft</u> 71.9%	656.0 Cusec	1710.0 Cusec	02/12 Falling
<b>7.Salandi 06:00Hr</b>	Keonjhar	50.24 m	<u>82.3 m</u> 83.21m	80.41m.	<u>49879.0 Ham</u> 55650.0 Ham (89.63%)	<u>78.6 m</u> 79.0%	20.61 Cumec	42.46 Cumec	02/11 Falling
<b>8.LowerIndra 08:00Hr</b>	Nuapada	251.0 m	<u>265 m</u> 265 m	263.86 m.	<u>28953.30 Ham</u> 31425.2Ham (92.1%)	<u>262.3 m</u> 72.9%	21.24 Cumec	40.50 Cumec	00/09 Falling

**Note:** Total Outflow consists of Irrigation, Spillway, Sluice, Power generation, Industrial & other supply and Evaporation loss \*U Indravati-7 gates, Muran Dam-5 gates (Total-12 Nos)

## Average Inflow into & Outflow from Reservoir

Reservoir	Inflow	Outflow	Observation Period
<b>Hirakud</b>	20153.0 Cusec	38303.0 Cusec	During last 24 Hrs ending 08:00Hrs of 13.10.2023
<b>Rengali</b>	449.92 Cumec	698.17 Cumec	During last 24 Hrs ending 06:00Hrs of 13.10.2023

## Travel Time of Flow in Mahanadi River

Hirakud Dam	115 km	Khairmal	106 km	Barmul	95 km	Mundali
	12-18 Hrs		12-16 Hrs		12-16 Hrs	

## River Discharge

Name of the River	G&D Site	Time (Hrs)	Discharge (cusec)
<b>Mahanadi (Up Stream Hirakud)</b>	Champa	12:00	7,880
	Tarapur	12:00	BG
	Saradihi	12:00	21,152
	Kalma	09:00	NR
	Deogaon	12:00	1,081
<b>Mahanadi (Down Stream Hirakud)</b>	Khairmal	12:00	50,200
	Barmul	12:00	59,200
	Mundali	12:00	80,800
<b>Tel</b>	Patharla	12:00	20,179
<b>Baitarani</b>	NH-5 Akhuapada	08:00	355
<b>Brahmani</b>	Pankapal	08:00	24,802
<b>Subarnarekha</b>	Rajghat	09:00	11,967
<b>Rushikulya</b>	Purusottampur	09:00	NR

## Status of Medium Reservoir

Sl.	Name of Dam / Reservoir	Available Live Storage (%) (Gates Open)	Sl.	Name of Dam / Reservoir	Available Live Storage (%) (Gates Open)	Sl.	Name of Dam / Reservoir	Available Live Storage (%) (Gates Open)
1.	Badanalla	82.1%	17.	Harabhangi	37.1%	33.	Ret	90.2%
2.	Baghalati	31.3%	18.	Harihorejore	97.4%	34.	Rukura	89.9%
3.	Baghua	65.7%	19.	Jambira*	8.2%	35.	Saipala	90.7%
4.	Bankabahal	80.2%	20.	Jharbandh*	100%	36.	Salia*	100%
5.	Bhanjanagar	90.1%	21.	Kalo	87.2%	37.	Sapua*	99.4%
6.	Bhaskel*	48.5%	22.	Kanjhari	97.2%	38.	Saraphgarh	96.3%
7.	Budhabudhiani	82.7%	23.	Kansabahal	94.1%	39.	Satiguda*	98.3%
8.	Dadarghati*	99.3%	24.	Khadkhai	93.2%	40.	Soroda*	73.0%
9.	Daha	86.2%	25.	Kuanria	77.1%	41.	Sunder	89.1%
10.	Deo	88.1% (2)	26.	Mandira	97.0% (3)	42.	Sunei	92.1%
11.	Derjang	93.1%	27.	Manjore	94.9%	43.	Talsara	99.6%
12.	Dhanei*	88.3%	28.	Nesa*	81.7%	44.	Telengiri	76.4%
13.	Dumberbahal	92.8%	29.	Pilasalki*	97.5%	45.	Titlagarh	85.6%
14.	Ghodahada	25.8%	30.	Pitamahal*	100%	46.	Upper Jonk	91.3%
15.	Gohira	98.3%	31.	Ramial	87.4%	47.	Upper Suktel*	95.1%
16.	Haladia	39.4%	32.	Remal	94.4%			

Note: \*Un-gated Dams (13 Nos.)

Above 75%   
 Above 90%

**Medium Reservoir: 47 Nos.**

(Gated-34, Un-Gated-13),

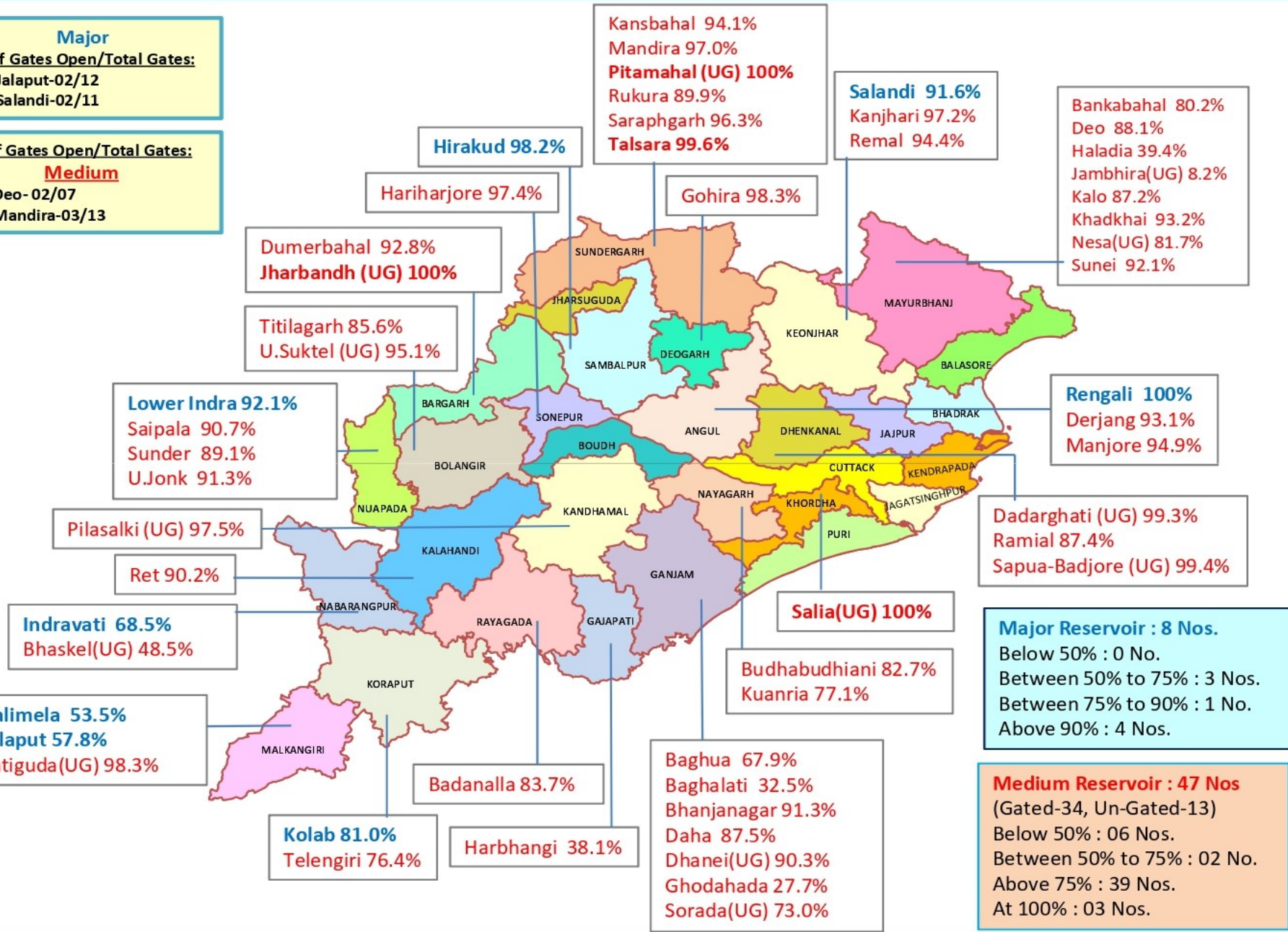
Below 50%: 6 Nos., Between 50% to 75%: 2 Nos., Above 75%:39 Nos.



**AVAILABLE LIVE STORAGE CAPACITY OF MAJOR & MEDIUM RESERVOIRS (14.10.2023)**

**Major**  
**No. of Gates Open/Total Gates:**  
 1. Jalaput-02/12  
 2. Salandi-02/11

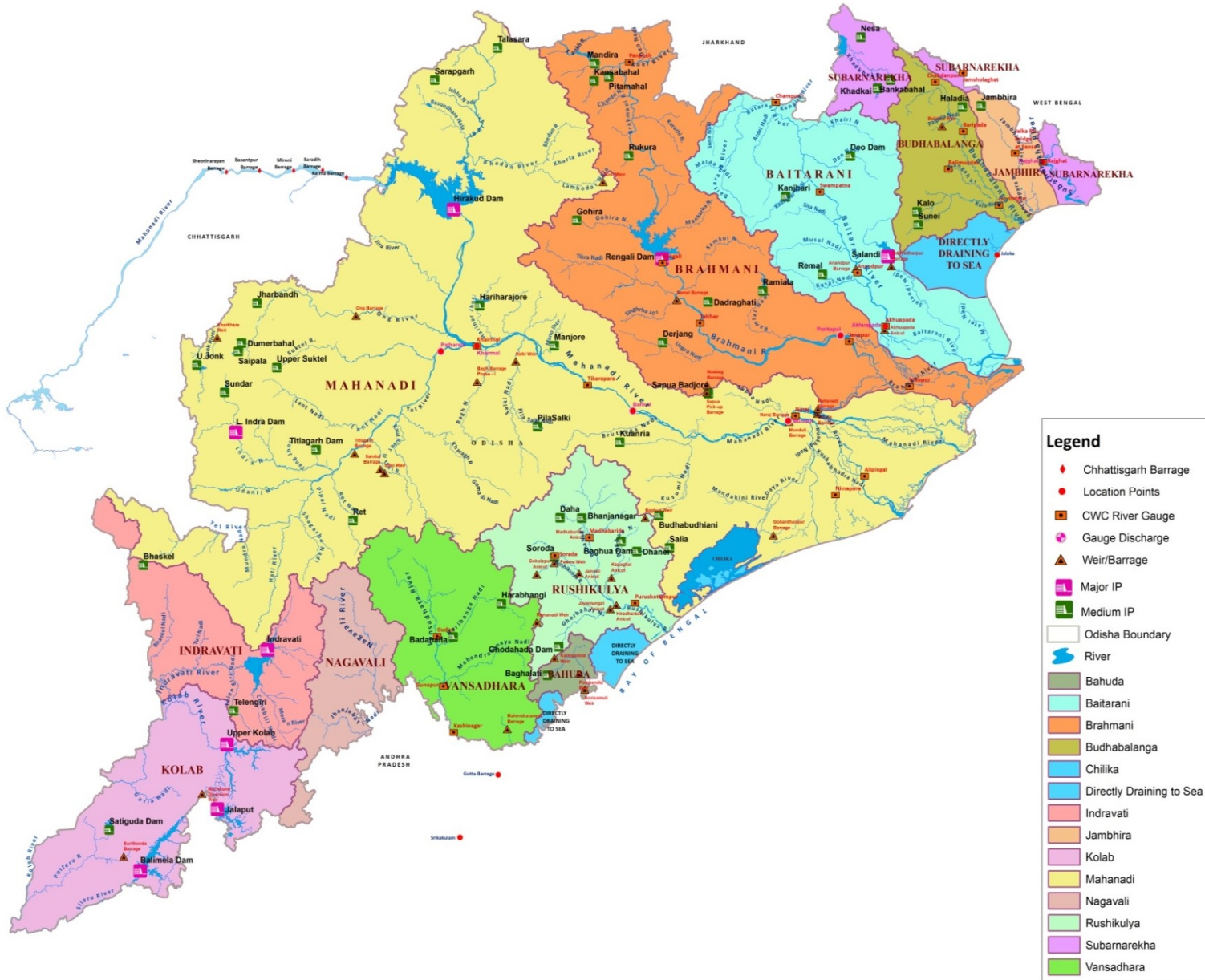
**No. of Gates Open/Total Gates:**  
**Medium**  
 1. Deo-02/07  
 2. Mandira-03/13



**Major Reservoir : 8 Nos.**  
 Below 50% : 0 No.  
 Between 50% to 75% : 3 Nos.  
 Between 75% to 90% : 1 No.  
 Above 90% : 4 Nos.

**Medium Reservoir : 47 Nos**  
 (Gated-34, Un-Gated-13)  
 Below 50% : 06 Nos.  
 Between 50% to 75% : 02 No.  
 Above 75% : 39 Nos.  
 At 100% : 03 Nos.

# MAJOR & MEDIUM RESERVOIRS , G & D SITES IN ODISHA



**Legend**

- ◆ Chhattisgarh Barrage
- Location Points
- CWC River Gauge
- ◆ Gauge Discharge
- ▲ Weir/Barrage
- Major IP
- Medium IP
- ▭ Odisha Boundary
- ▬ River
- Bahuda
- Baitarani
- Brahmani
- Budhabalanga
- Chilika
- Directly Draining to Sea
- Indravati
- Jambhira
- Kolab
- Mahanadi
- Nagavali
- Rushikulya
- Subarnarekha
- Vansadhara

भारत सरकार  
 भारत मौसम विज्ञान विभाग  
 (पृथ्वी विज्ञान मंत्रालय)  
 पता : मौसम विज्ञान केन्द्र, भुवनेश्वर  
 फोन न. २५९६०१० &  
 २५९६११६  
 फैक्स न. २५९६०१० &  
 २५९६०९३



GOVERNMENT OF INDIA  
 INDIA METEOROLOGICAL DEPARTMENT  
 (Ministry of Earth Sciences)  
**METEOROLOGICAL CENTRE**  
**BIJUPATNAIK AIRPORT**  
**BHUBANESWAR-751020**  
 TELE: 2596010 & 2596116  
 FAX : 2596010 & 2596093  
 E-MAIL : imdbbsr@ori.nic.in

Ref No: FM/HM Bulletin/136

Dated: 14/10/2023  
 Time of Issue: 1300 hrs IST

## HYDROMET BULLETIN

### 1) Synoptic Situation

No significant synoptic system lies over the region.

### a) River Sub-basin-wise Quantitative Precipitation Forecast (QPF)

S. No.	Basin Name	Sub-basin Name	QPF (mm)						
			Day-1 (14.10.23)	Day-2 (15.10.23)	Day-3 (16.10.23)	Day-4 (17.10.23)	Day-5 (18.10.23)	Day-6 (19.10.23)	Day-7 (20.10.23)
1	BAITRANI	BT	0	0	0	0	0	0	0
2	LOWER BRAHMANI	LB	0	0	0	0	0	0	0
3	UPPER BRAHMANI	UB	0	0	0	0	0	0	0
4	BHURABALANG	BB	0	0	0	0	0	0	0
5	LOWER MAHANADI	LM	0	0	0	0	0	0	0
6	NAGAVALI	NV	0	0	0	0	0	0.1-10	0.1-10
7	RUSHIKULIYA	RK	0	0	0	0	0	0.1-10	0.1-10
8	SUBERNAREKHA	SR	0	0	0	0	0	0	0
9	UPPER MAHANADI	UM	0	0	0	0	0	0	0
10	VAMSDHARA	VD	0	0	0	0	0	0.1-10	0.1-10

PF categories (mm)	0	0.1-10	11-25	26-37	38-50	51-75	76-100	>100
--------------------	---	--------	-------	-------	-------	-------	--------	------



## 2b) River Sub-basin-wise Intensity and Distribution of QPF

S.	Basin Name	Sub-basin Name	Intensity (I) and Spatial Distribution (D)													
			Day-1 (14.10.23)		Day-2 (15.10.23)		Day-3 (16.10.23)		Day-4 (17.10.23)		Day-5 (18.10.23)		Day-6 (19.10.23)		Day-7 (20.10.23)	
			I	D	I	D	I	D	I	D	I	D	I	D	I	D
1	BAITRANI	BT	M.Dry	DRY	M.Dry	DRY	M.Dry	DRY	M.Dry	DRY	M.Dry	DRY	M.Dry	DRY	M.Dry	DRY
2	LOWER BRAHMANI	LB	M.Dry	DRY	M.Dry	DRY	M.Dry	DRY	M.Dry	DRY	M.Dry	DRY	M.Dry	DRY	M.Dry	DRY
3	UPPER BRAHMANI	UB	M.Dry	DRY	M.Dry	DRY	M.Dry	DRY	M.Dry	DRY	M.Dry	DRY	M.Dry	DRY	M.Dry	DRY
4	BHURABAL ANG	BB	M.Dry	DRY	M.Dry	DRY	M.Dry	DRY	M.Dry	DRY	M.Dry	DRY	M.Dry	DRY	M.Dry	DRY
5	LOWER MAHANADI	LM	M.Dry	DRY	M.Dry	DRY	M.Dry	DRY	M.Dry	DRY	M.Dry	DRY	M.Dry	DRY	M.Dry	DRY
6	NAGAVALI	NV	M.Dry	DRY	M.Dry	DRY	M.Dry	DRY	M.Dry	DRY	M.Dry	DRY	L	ISOL	L	ISOL
7	RUSHIKULIYA	RK	M.Dry	DRY	M.Dry	DRY	M.Dry	DRY	M.Dry	DRY	M.Dry	DRY	L	ISOL	L	ISOL
8	SUBERNAREKHA	SR	M.Dry	DRY	M.Dry	DRY	M.Dry	DRY	M.Dry	DRY	M.Dry	DRY	M.Dry	DRY	M.Dry	DRY
9	UPPER MAHANADI	UM	M.Dry	DRY	M.Dry	DRY	M.Dry	DRY	M.Dry	DRY	M.Dry	DRY	M.Dry	DRY	M.Dry	DRY
10	VAMSDHARA	VD	M.Dry	DRY	M.Dry	DRY	M.Dry	DRY	M.Dry	DRY	M.Dry	DRY	L	ISOL	L	ISOL

Spatial Distribution		
DRY	Dry	No station reported rainfall
ISOL	One or two places	25% or less number of stations recorded rainfall 2.5 mm
SCT	At a few places	26%-50% number of stations recorded rainfall 2.5 mm
FWS	At many places	51%-75% number of stations recorded rainfall 2.5 mm
WS	At most places	76%-100% number of stations recorded rainfall 2.5 mm

Intensity					
M.Dry	NIL	0 cm	VL	Very Light Rainfall	Trace
L	Light Rainfall	Upto 1 cm	M	Moderate Rainfall	2-6 cm
H	Heavy Rainfall	7-11 cm	VH	Very Heavy rainfall	12-20 cm
EH	Extremely Heavy Rainfall	21 cm or more			
ExH	Exceptionally Heavy Rainfall	When the amount is a value near about the highest recorded rainfall at or near the station for the month or season. However, this term will be used only when the actual rainfall amount exceeds 12 cm.			

### 3) River Sub-basin-wise Heavy Rainfall Warning

S. No	Basin Name	Sub-basin Name	Day-1 (14.10.23)		Day-2 (15.10.23)		Day-3 (16.10.23)		Day-4 (17.10.23)		Day-5 (18.10.23)		Day-6 (19.10.23)		Day-7 (20.10.23)	
			I	D	I	D	I	D	I	D	I	D	I	D	I	D
1	BAITRANI	BT	NIL	NIL	NIL	NIL	NIL	NIL	NIL	NIL	NIL	NIL	NIL	NIL	NIL	NIL
2	LOWER BRAHMANI	LB	NIL	NIL	NIL	NIL	NIL	NIL	NIL	NIL	NIL	NIL	NIL	NIL	NIL	NIL
3	UPPER BRAHMANI	UB	NIL	NIL	NIL	NIL	NIL	NIL	NIL	NIL	NIL	NIL	NIL	NIL	NIL	NIL
4	BHURABALAN G	BB	NIL	NIL	NIL	NIL	NIL	NIL	NIL	NIL	NIL	NIL	NIL	NIL	NIL	NIL
5	LOWER MAHANADI	LM	NIL	NIL	NIL	NIL	NIL	NIL	NIL	NIL	NIL	NIL	NIL	NIL	NIL	NIL
6	NAGAVALI	NV	NIL	NIL	NIL	NIL	NIL	NIL	NIL	NIL	NIL	NIL	NIL	NIL	NIL	NIL
7	RUSHIKULIYA	RK	NIL	NIL	NIL	NIL	NIL	NIL	NIL	NIL	NIL	NIL	NIL	NIL	NIL	NIL
8	SUBERNAREK HA	SR	NIL	NIL	NIL	NIL	NIL	NIL	NIL	NIL	NIL	NIL	NIL	NIL	NIL	NIL
9	UPPER MAHANADI	UM	NIL	NIL	NIL	NIL	NIL	NIL	NIL	NIL	NIL	NIL	NIL	NIL	NIL	NIL
10	VAMSDHARA	VD	NIL	NIL	NIL	NIL	NIL	NIL	NIL	NIL	NIL	NIL	NIL	NIL	NIL	NIL

Spatial Distribution			Intensity					
DRY	Dry	No station reported rainfall	M.Dry	NIL	0 cm	VL	Very Light Rainfall	Trace
ISOL	One or two places	25% or less number of stations recorded rainfall 2.5 mm	L	Light Rainfall	Upto 1 cm	M	Moderate Rainfall	2-6 cm
SCT	At a few places	26%-50% number of stations recorded rainfall 2.5 mm	H	Heavy Rainfall	7-11 cm	VH	Very Heavy rainfall	12-20 cm
FWS	At many places	51%-75% number of stations recorded rainfall 2.5 mm	EH	Extremely Heavy Rainfall	21 cm or more			
WS	At most places	76%-100% number of stations recorded rainfall 2.5 mm	ExH	Exceptionally Heavy Rainfall	When the amount is a value near about the highest recorded rainfall at or near the station for the month or season. However, this term will be used only when the actual rainfall amount exceeds 12 cm.			

#### 4) River Sub-basin-wise Probabilistic QPF

Basin Name	Sub-basin Name	QPF Probability (%)																																									
		Day-1 (14.10.2023) (QPF categories)					Day-2 (15.10.2023) (QPF categories)					Day-3 (16.10.2023) (QPF categories)					Day-4 (17.10.2023) (QPF categories)					Day-5 (18.10.2023) (QPF categories)					Day-6 (19.10.2023) (QPF categories)					Day-7 (20.10.2023) (QPF categories)											
		0	0.1-10	11-25	26-50	51-100	>100	0	0.1-10	11-25	26-50	51-100	>100	0	0.1-10	11-25	26-50	51-100	>100	0	0.1-10	11-25	26-50	51-100	>100	0	0.1-10	11-25	26-50	51-100	>100	0	0.1-10	11-25	26-50	51-100	>100	0	0.1-10	11-25	26-50	51-100	>100
BAITRANI	B T																																										
LOWER BRAHMANI	L B																																										
UPPER BRAHMANI	U B																																										
BHURABALANG	B B																																										
LOWER MAHANADI	L M																																										
NAGAVALI	N V																																										
RUSHIKULIYA	R K																																										
SUBERNAREKHA	S R																																										
UPPER MAHANADI	U M																																										
VAMSDHARA	V D																																										



**5) Station-wise significant rainfall recorded at 0830 hrs IST of today**

S. N O.	NAME OF SUB-BASIN	NAME OF STATION AND RAINFALL ( $\geq 55.0$ MM. )
		Nil

**6) River Sub-basin-wise observed Average Areal Precipitation (AAP) of today**

S. No.	Basin Name	Sub-basin Name	AAP (mm)
1	BAITRANI	BT	0.0
2	LOWER BRAHMANI	LB	0.0
3	UPPER BRAHMANI	UB	0.0
4	BHURABALANG	BB	0.0
5	LOWER MAHANADI	LM	0.0
6	NAGAVALI	NV	0.0
7	RUSHIKULIYA	RK	0.0
8	SUBERNAREKHA	SR	0.0
9	UPPER MAHANADI	UM	0.0
10	VAMSDHARA	VD	0.0

(DUTY OFFICER)  
for Scientist-F & Head  
FLOOD MET.OFFICE  
M.C Bhubaneswar

RAINFALL FOR PAST 24 HRS ENDING AT 0830 HRS OF DATE

Date:-14.10.2023

Sl No	Name of Stations	Rainfall (in mm)
UPPER MAHANADI		
1	AMBABHONA	0.0
2	ANDHIARKHOR	0.0
3	BAIKUNTHAPUR	0.0
4	BAMNIDIHI	0.0
5	BANGODAM	0.0
6	BARAGAON	0.0
7	BASANTAPUR	0.0
8	BORANDA	0.0
9	DEOGAON (IRRI)	0.0
10	DEOGAON (CWC)	0.0
11	DHARAMJAYGARH	0.0
12	GHATORA	0.0
13	HEMGIRI	0.0
14	JAMADARPALLI	0.0
15	JAMANKIRA	0.0
16	JHARSUGUDA (IMD)	0.0
17	KORBA	0.0
18	KUCHINDA	0.0
19	KURUBHATTA	0.0
20	KELO	0.0
21	MANENDRAGARH	0.0
22	MAHULPALI	0.0
23	NAWAPARA	0.0
24	LAIKERA	0.0
25	Gundardehi	0.0
26	Doundi	0.0
27	Gurur	0.0
28	DONDILOHARA	0.0
29	BALOD	0.0
30	PALLARI/PALARI	0.0
31	BALODA BAZAR	0.0
32	Kasdole	0.0
33	Bilaigarh	0.0
34	Bhatapara	0.0
35	Darbha	0.0
36	Saja	0.0
37	Berla	0.0
38	Nawagarh	0.0
39	Than Khamaria	0.0
40	BEMETARA	0.0
41	Masturi	0.0
42	Bilha	0.0
43	Kota	0.0
44	Takhatpur	0.0
45	BILASPUR	0.0
46	Kurud	0.0
47	Nagari	0.0
48	Magarlod	0.0
49	DHAMTARI	0.0
50	Patan	0.0
51	Dhamdha	0.0
52	DURG	0.0
53	DEOBHOG	0.0
54	GARIABUND	0.0
55	Chhura	0.0
56	Mainpur	0.0
57	Akaltara	0.0
58	Pamgarh	0.0
59	Baloda	0.0
60	Jaijaipur	0.0
61	Malkharoda	0.0
62	Dhabhara	0.0
63	SAKTI	0.0
64	JANJGIR	0.0
65	CHAMPA	0.0
66	Manora	0.0
67	Bagicha	0.0
68	Duldula	0.0
69	Kunkuri	0.0
70	Kansabel	0.0
71	Tapkara	0.0

Sl No	Name of Stations	Rainfall (in mm)
UPPER MAHANADI		
72	PATHALGAON	0.0
73	JASHPURNAGAR	0.0
74	Bodla	0.0
75	Sahaspurlohara	0.0
76	Pandaria	0.0
77	KAWARDHA	0.0
78	Charama	0.0
79	Nerharpur	0.0
80	Poudi Uparora	0.0
81	Kartala	0.0
82	PALI	0.0
83	KATGHORA	0.0
84	Sonhat	0.0
85	Khadgava	0.0
86	Pithora	0.0
87	Bagbahara	0.0
88	Basana	0.0
89	MAHASAMUND	0.0
90	SARAIPALI	0.0
91	Patharia	0.0
92	Lormi	0.0
93	MUNGELI	0.0
94	Kharsiya	0.0
95	Lailunga	0.0
96	Pusaur	0.0
97	Baramkela	0.0
98	Tamnar	0.0
99	SARANGARH	0.0
100	RAIGARH	0.0
101	GHARGHODA	0.0
102	MANA-RAIPUR-AP	0.0
103	ARANG	0.0
104	Tilda	0.0
105	Abhanpur	0.0
106	Chhui khadan	0.0
107	Khairagarh	0.0
108	Chhuria	0.0
109	RAJNANDGAON	0.0
110	DONGARGARH	0.0
111	DONGARGAON	0.0
112	GANDAI	0.0
113	AMBAGARH CHOWKI	0.0
114	Premnagar	0.0
115	Ramanujnagar	0.0
116	Batoli	0.0
117	Sitapur	0.0
118	Lundra	0.0
119	KOLABIRA	0.0
120	PARMANPUR	0.0
121	PENDRA RD (CWC)	0.0
122	RAIPUR(IMD)	0.0
123	RAIPUR (CWC)	0.0
124	RAJIM	0.0
125	RAMPUR	0.0
126	SANKARA	0.0
127	SEORINARAYAN	0.0
128	SIMGA	0.0
129	SUNDERGARH (IMD)	0.0
130	SUND-RH (CWC)	0.0
131	SURAJGARH	0.0
132	THETTANG	0.0
133	GOPALPUR	0.0
134	ZONDRA	0.0
135	BALISANKRA	0.0
136	BAMRA	0.0
137	LEPHRIPARA	0.0
138	KUTRA	0.0
139	TANGARPALI	0.0
140	KIRMIRA	0.0
141	LAKHANPUR	0.0

Sl No	Name of Stations	Rainfall (in mm)
LOWER MAHANADI		
1	SATYABADI	0.0
2	DERABIS	0.0
3	JHARBANDH	0.0
4	GAISILETE	0.0
5	PHIRINGIA	0.0
6	ALIPINGAL	0.0
7	ARMPUR	0.0
8	ATHAGARH	0.0
9	ATHAMALIK	0.0
10	BALIGUDA	0.0
11	BANPUR	0.0
12	BARGARH	0.0
13	BARMUL	0.0
14	BELGAON	0.0
15	BHAWANIPATNA(IMD)	0.0
16	BHUBANESWAR (IMD)	0.0
17	BIJEPUR	0.0
18	BINIKA	0.0
19	BOLANGIR (IMD)	0.0
20	BOUDA GARH	0.0
21	BURLA (CWC)	0.0
22	BURLA (IRRI)	0.0
23	CUTTACK (IMD)	0.0
24	CHILIKA	0.0
25	DASHPALLA	0.0
26	DUNGURIPALI	0.0
27	GOP	0.0
28	HARABHANGA	0.0
29	HIRAKUD (IMD)	0.0
30	JAIPATNA	0.0
31	JUNAGARH	0.0
32	KAKATPUR	0.0
33	KALINGA	0.0
34	KANAS	0.0
35	KANTAMAL (BDO)	0.0
36	KANTAMAL (CWC)	0.0
37	KENDRAPARA	0.0
38	KENDRAPARA (PTO)	0.0
39	KESINGA	0.0
40	KHANDAPADA* (BDO)	0.0
41	KHANDAPADA (CWC)	0.0
42	KHARIAR	0.0
43	KHAIRMAL (IRR)	0.0
44	KHAIRAMAL (CWC)	0.0
45	KOMNA	0.0
46	M. RAMPUR	0.0
47	MUNDALI	0.0
48	NARAJ	0.0
49	NARASINGHPUR	0.0
50	NAYAGARH	0.0
51	NIMAPARA	0.0
52	PADAMPUR	0.0
53	PADMABATI	0.0
54	PAIKAMAL	0.0
55	PARADEEP (IMD)	0.0
56	G.UDAYGIRI	0.0
57	PATNA GARH	0.0
58	PATAMUNDAI	0.0
59	PHULBANI (IMD)	0.0
60	PHULBANI (CWC)	0.0
61	PIPLI	0.0
62	PURI (IMD)	0.0
63	RAIRAKHOL	0.0
64	R.K NAGAR	0.0
65	RANPUR	0.0
66	SALBHATTA	0.0
67	SAMBALPUR (IMD)	0.0
68	SOHELA	0.0
69	SONEPUR	0.0
70	TANGI	0.0
71	TIKABALI	0.0

Sl No	Name of Stations	Rainfall (in mm)
LOWER MAHANADI		
72	TIKARAPARA	0.0
73	TITLA GARH (IMD)	0.0
74	KOKSARA	0.0
75	TUREIKELA	0.0
76	KALAMPUR	0.0
77	SINAPALI	0.0
78	BODEN	0.0
79	LOISINGHA	0.0
80	TIRTOL	0.0
81	SAINTALA	0.0
82	NARLA	0.0
83	AGALPUR	0.0
84	RAIKIA	0.0
85	B.M.PUR	0.0
86	BARPALI	0.0
87	ATTABIRA	0.0
88	BHATALI	0.0
89	TH. RAMPUR	0.0
90	GUDVELA	0.0
91	DEOGAON	0.0
92	BANGAMUNDA	0.0
93	BIRIDI	0.0
94	NAUGAON	0.0
95	GOLAMUNDA	0.0
96	CHAKAPAD	0.0
97	KHAJURIPADA	0.0
98	MOHAKALAPADA	0.0
99	JATNI	0.0
100	BEGUNIA	0.0
101	BHAPUR	0.0
102	DHANKAUDA	0.0
103	JAGATSingHPUR(PTO)	0.0
104	KHORDHA(PTO)	0.0
105	CHANDAHANDI	0.0
106	JHORIGAM	0.0
107	DHARMAGARH	0.0
108	BELPADA	0.0
109	KHAPRAKHOL	0.0
110	TARVA	0.0
111	K NUAGAON	0.0
112	JUJUMURA	0.0
113	ULLUNDA	0.0
114	KARLAMUNDA	0.0
115	BOLAGARH	0.0
116	GANIA	0.0
117	BANKI	0.0
118	TIGIRIA	0.0
119	ASTARANGA	0.0
120	BRAHMAGIRI	0.0
121	KRISHNAPRASAD	0.0
122	KANTAPADA	0.0
123	MAHANGA	0.0
124	NIALI	0.0
125	NISCHINTAKOILI	0.0
126	SALEPUR	0.0
127	BALIKUDA	0.0
128	RAGHUNATHPUR	0.0
129	GARADAPUR	0.0
130	MARSAGHAI	0.0
131	BALIPATNA	0.0
132	KUJANGA	0.0
133	NUAUGAON	0.0
134	ODAGAON	0.0
135	BASANA	0.0
136	DEOBHOG	0.0



**RAINFALL FOR PAST 24 HRS ENDING AT 0830 HRS OF DATE**

**Date:-14.10.2023**

SI No	Name of Stations	Rainfall (in mm)
<b>UPPER BRAHMANI</b>		
1	MANORA	0.0
2	LAHUNIPARA	0.0
3	PALLAHARA	0.0
4	PANPOSH	0.0
5	RAJGANGA PUR	0.0
6	BARKOTE	0.0
7	BONAI	0.0
8	DEOGARH	0.0
9	MANDIRADAM	0.0
10	TENSA	0.0
11	LATHIKATA	0.0
12	JODA	0.0
13	GURUNDIA	0.0
14	PALKOT	0.0
15	RAIDIH	0.0
16	KURU	0.0
17	LOHARDAGA	0.0
18	MANDAR	0.0
19	KOLEBIRA	0.0
20	KURDEG	0.0
21	SIMDEGA	0.0
22	JASHPURNAGAR	0.0
23	RAURKELA(Airport)	0.0
<b>LOWER BRAHMANI</b>		
1	REAMAL	0.0
2	RENGALI	0.0
3	ALTUMA	0.0
4	ANGUL (IMD)	0.0
5	BATAGAON	0.0
6	CHHENDIPADA	0.0
7	DHENKANAL	0.0
8	DHENKANAL (PTO)	0.0
9	HINDOL	0.0
10	JENAPUR	0.0
11	KAMAKHYA NGR	0.0
12	NAKTIDEUL	0.0
13	SUKINDA	0.0
14	TALCHER	0.0
15	TELKOI	0.0
16	KANKADAHAD	0.0
17	JAJPUR	0.0
18	JAJPUR (PTO)	0.0
19	RAJ KANIKA	0.0
20	AUL	0.0
21	RAJNAGAR	0.0
22	BANARPAL	0.0
23	KANIHA	0.0
24	PARJANG	0.0
25	GONDIA	0.0
26	BHUBAN	0.0
27	DANAGADI	0.0
28	KOREI	0.0
29	CHANDIKHOL	0.0
30	BARI	0.0
31	BINJHARPUR	0.0

SI No	Name of Stations	Rainfall (in mm)
<b>BAITARANI</b>		
1	BONTH	0.0
2	AKHUAPADA	0.0
3	ANANDAPUR	0.0
4	CHAMPUA	0.0
5	CHANDBALI (IMD)	0.0
6	DAITARI	0.0
7	GHATGAON	0.0
8	JHUMPURA	0.0
9	JOSHIPUR	0.0
10	KARANJIA	0.0
11	KEON-GARH (IMD)	0.3
12	KEONJHAR (CWC)	0.0
13	SWAMPATNA	0.0
14	THAKUR-DA(BDO)	0.0
15	THAKUR-DA (CWC)	0.0
16	SAHARPADA	0.0
17	KAPTIPADA	0.0
18	HATADIHI	0.0
19	BHADRAK	0.0
20	BHANDARIPOKHARI	0.0
21	BANSPAL	0.0
22	GHASIPURA	0.0
23	SUKRULI	0.0
24	RARUANA	0.0
25	DHAMNAGAR	0.0
26	TIHIDI	0.0
27	HARICHANDANPUR	0.0
<b>NAGAVALI</b>		
1	K.SINGHPUR	0.0
2	RAYAGADA	0.0
3	SANKIL RD BRIDGE	NR
4	JANJHAVATI RDB	NR
5	JAGGAGUDA	NR
6	SRIKAKULAM	0.0
7	BANDHUGAN	0.0
8	SALUR	0.0
9	KOLNARA	0.0
10	Komarada	0.0
11	Jiyyammavalasa	0.0
12	Garugubilli	0.0
13	Parvathipuram	0.0
14	Bobbili	0.0
15	Therlam	0.0
16	Pusapatirega	0.0
17	Denkada	0.0
18	Vizianagaram	0.0
19	Vepada	0.0

SI No	Name of Stations	Rainfall (in mm)
<b>RUSHIKULYA</b>		
1	BUGUDA	0.0
2	ASKA	0.0
3	BERHAMPUR	0.0
4	BHANJANAGAR	0.0
5	CHHATRAPUR	0.0
6	DARINGIBADI	0.0
7	GOPALPUR (IMD)	0.0
8	MADHABARIDA	0.0
9	PUSOTTAMPUR	0.0
10	DIGAPAHANDI	0.0
11	JAGANNATHPRASAD	0.0
12	SORADA	0.0
13	POLASARA	0.0
14	KODALA	0.0
15	RANGEILUNDA	0.0
16	KUKUDAHANDI	0.0
17	PATRAPUR	0.0
18	SANKHEIMUNDI	0.0
19	DHARAKOTE	0.0
20	SHERAGADA	0.0
21	GANJAM	0.0
22	BELAGUNTHA	0.0
23	HINJILI	0.0
<b>VANSADHARA</b>		
1	AMBADOLA	0.0
2	BISSAM CUTTACK	0.0
3	GOTTA BARRAGE	0.0
4	GUDARI	0.0
5	GUNUPUR	0.0
6	KALINGA-NAM (IMD)	0.0
7	KASHINAGAR	0.0
8	KOTAGARH	0.0
9	KOTRAGUDA	0.0
10	MAHENDRAGARH	0.0
11	MOHANA	0.0
12	PARAKHEMUNDI	0.0
13	R.GUDA	0.0
14	NUAGADA	0.0
15	MUNIGUDA	0.0
16	R.UDAYAGIRI	0.0
17	LANJIGARH	0.0
18	NELIAPUTY	NR
19	SIRJHOLY	NR
20	GUMMA	0.0
21	GOSANI	0.0
22	CHADRAPUR	0.0
23	Balajipeta	0.0

SI No	Name of Stations	Rainfall (in mm)
<b>SUBERNAREKHA</b>		
1	SARASAKANA	0.0
2	BHOGARAI	0.0
3	FEKOGHAT	0.0
4	GHATSILA	0.0
5	JALESWAR	0.0
6	JAMSEDPUR (IMD)	0.0
7	JAMSEDPUR (CWC)	0.0
8	JAMSOLAGHAT	0.0
9	RAIRANG PUR	0.0
10	RAJGHAT	0.0
11	RANCHI	0.0
12	TIRING	0.0
13	BIJATALA	0.0
14	KUSUMI	0.0
15	JAMDA	0.0
16	ARKI	0.0
17	ICAR NAMKUM	0.0
18	ORMANJHI	0.0
19	CHANDIL	0.0
20	KHARSEMA	0.0
21	NIMDIH	0.0
22	CHAIBASA	0.0
23	CHAKRADHARPUR	0.0
24	BAHALDA	0.0
<b>BUDHABALANGA</b>		
1	BALASORE (IMD)	0.0
2	BALASORE (CWC)	0.0
3	BALIMUNDALI	0.0
4	BANGRIPOSHI	0.0
5	BARIPADA (IMD)	0.0
6	BARIPADA (CWC)	0.0
7	CHANDANPUR	0.0
8	JAIPUR	0.0
9	NAWANA	0.0
10	NH-5, GOVINDPUR	0.0
11	NILGIRI	0.0
12	SORO	0.0
13	BETANATI	0.0
14	UDALA	0.0
15	BAHANAGA	0.0
16	KHAIRA	0.0
17	MURUDA	0.0
18	SULIAPADA	0.0
19	G.B.NAGAR	0.0
20	REMUNA	0.0
21	SAMAKHUNTA	0.0
22	BASUDEVPUR	0.0
23	CHANDUA(KULIANA)	0.0
24	RASAGOVINDAPUR	0.0
25	OUPADA	0.0

Source:-Met Centre Bhubaneswar

## BLOCKWISE RAINFALL FOR PAST 24 HRS ENDING AT 0830 HRS OF DATE

Date:14.10.2023

SI No	Name of Stations	Rainfall (in mm)	SI No	Name of Stations	Rainfall (in mm)	SI No	Name of Stations	Rainfall (in mm)	SI No	Name of Stations	Rainfall (in mm)	SI No	Name of Stations	Rainfall (in mm)
<b>1. ANGUL</b>			<b>8. DEOGARH</b>			4 Madanpur Rampur 0.0			<b>21. MALKANGIRI</b>			<b>27. RAYAGADA</b>		
1	Angul	0.0	1	Barkote	0.0	5	Narla	0.0	1	Malkangiri	0.0	1	Rayagada	0.0
2	Banarpal	0.0	2	Deogarh	0.0	6	Lasjigarh	0.0	2	Mathili	0.0	2	Kolnara	0.0
3	Chhendipada	0.0	3	Reamal	0.0	7	Thuamul Rampur	0.0	3	Khoirput	0.0	3	Kalyansingpur	0.0
4	Talcher	0.0	<b>Avg 0.0</b>			8	Dharmagarh	0.0	4	Chitrakonda (K.Gumma)	0.0	4	Kashipur	0.0
5	Kaniha	0.0	<b>9. DHENKANAL</b>			9	Junagarh	0.0	5	Korukonda	0.0	5	Gonupur	0.0
6	Athamalik	0.0	1	Dhenkanal	0.0	10	Kalampur	0.0	6	Kalimela	0.0	6	Padmapur	0.0
7	Kishorenagar	0.0	2	Gondia	0.0	11	Jayapatna	0.0	7	Podia	0.0	7	Gudari	0.0
8	Pallahara	0.0	3	Odapada	0.0	12	Kokasara	0.0	<b>Avg 0.0</b>			8	Ramanagada	0.0
<b>Avg 0.0</b>			4	Hindol	0.0	13	Golamunda	0.0	<b>22. MAYURBHANJ</b>			9	Bissam Cuttack	0.0
<b>2. BALASORE</b>			5	Kamakhyanagar	0.0	<b>Avg 0.0</b>			1	Samakhunta	0.0	10	Muniguda	0.0
1	Bhograi	0.0	6	Bhubang	0.0	<b>16. KANDHAMAL</b>			2	Badasahi	0.0	11	Chandrapur	0.0
2	Basta	0.0	7	Parjang	0.0	1	Baliguda	0.0	3	Betanati	0.0	<b>Avg 0.0</b>		
3	Jaleswar	0.0	8	Kankadahad	0.0	2	Chakapad	0.0	4	Morda	0.0	<b>28. SAMBALPUR</b>		
4	Baliapal	0.0	<b>Avg 0.0</b>			3	Daringibadi	0.0	5	Rasgovindapur	0.0	1	Jujumura	0.0
5	Balasure	0.0	<b>10. GAJAPATI</b>			4	G.Udayagiri	0.0	6	Kuliana	0.0	2	Dhankauda	0.0
6	Remuna	0.0	1	Kasinagar	0.0	5	Khajuripada	0.0	7	Sarasakana	0.0	3	Rengali	0.0
7	Nilagiri	0.0	2	Paralakhemundi	0.0	6	Kotagarh	0.0	8	Suliapada	0.0	4	Maneswar	0.0
8	Soro	0.0	3	Rayagada	0.0	7	Nuagaon	0.0	9	Bangriposi	0.0	5	Kuchinda	0.0
9	Bahanaga	0.0	4	Gumma	0.0	8	Phiringia	0.0	10	Baripada	0.0	6	Jamankira	0.0
10	Simulia	0.0	5	Nuagada	0.0	9	Phulbani	0.0	11	Khunta	0.0	7	Bamra	0.0
11	Khaira	0.0	6	R.Udaygiri	0.0	10	Raika	0.0	12	Gopabandhunagar	0.0	8	Rairakhol	0.0
12	Oupada	0.0	7	Mohana	0.0	11	Tikabali	0.0	13	Udala	0.0	9	Naktideul	0.0
<b>Avg 0.0</b>			8	Gosani	0.0	12	Tunudibandh	0.0	14	Kaptipada	0.0	<b>Avg 0.0</b>		
<b>3. BARGARH</b>			<b>Avg 0.0</b>			<b>Avg 0.0</b>			15	Besoi	0.0	<b>29. SUBARNAPUR</b>		
1	Ambabhona	0.0	<b>11. GANJAM</b>			<b>17. KENDRAPARA</b>			16	Bijatata	0.0	1	Sonepur	0.0
2	Attabira	0.0	1	Chhatrapur	0.0	1	Kendrapara	0.0	17	Rairangapur	0.0	2	Binika	0.0
3	Bargarh	0.0	2	Ganjam	0.0	2	Derabis	0.0	18	Kusumi	0.0	3	Tarbha	0.0
4	Barpali	0.0	3	Purusottampur	0.0	3	Marshaghai	0.0	19	Jamda	0.0	4	Dunguripali	0.0
5	Bhatli	0.0	4	Kabisuryanagar	0.0	4	Mohakalpara	0.0	20	Bahalda	0.0	5	Birmaharajpur	0.0
6	Bhedden	0.0	5	Polasara	0.0	5	Garadapur	0.0	21	Tiring	0.0	6	Ullunda	0.0
7	Bijepur	0.0	6	Kodala	0.0	6	Pattamundai	0.0	22	Joshiapur	0.0	<b>Avg 0.0</b>		
8	Gaisilet	0.0	7	Khalikot	0.0	7	Aul	0.0	23	Karanja	0.0	<b>30. SUNDARGARH</b>		
9	Jharbandh	0.0	8	Hinjilicut	0.0	8	Rajnagar	0.0	24	Thakurmunda	0.0	1	Hemgir	0.0
10	Padampur	0.0	9	Rangeilunda	0.0	9	Rajkanika	0.0	25	Sukuruli	0.0	2	Lephripura	0.0
11	Paikmal	0.0	10	Kukudakhandi	0.0	<b>Avg 0.00</b>			26	Raruana	0.0	3	Tangarpali	0.0
12	Sohela	0.0	11	Chikiti	0.0	<b>18. KEONJHAR</b>			<b>Avg 0.0</b>			4	Sundargarh	0.0
<b>Avg 0.0</b>			12	Patrapur	0.0	1	Keonjhar	0.0	<b>23. NAWARANGHPUR</b>			5	Subdega	0.0
<b>4. BHADRAK</b>			13	Sanakhemundi	0.0	2	Banspal	0.0	1	Nawarangpur	0.0	6	Balisankara	0.0
1	Bhadrak	0.0	14	Digapahandi	0.0	3	Telkoi	0.0	2	Nandahandi	0.0	7	Bargaon	0.0
2	Bhandaripokhari	0.0	15	Bhanjanagar	0.0	4	Patna	0.0	3	Tentulikhunti	0.0	8	Kutra	0.0
3	Basudevpur	0.0	16	Belaguntha	0.0	5	Saharpada	0.0	4	Papadahandi	0.0	9	Rajgangpur	0.0
4	Bonth	0.0	17	Jagannathprasad	0.0	6	Ghatgaon	0.0	5	Kosagumuda	0.0	10	Kuarmunda	0.0
5	Chandbali	0.0	18	Buguda	0.0	7	Harichandanpur	0.0	6	Dabugaon	0.0	11	Nuagaon	0.0
6	Dhamnagar	0.0	19	Aska	0.0	8	Anandapur	0.0	7	Umerkote	0.0	12	Bisra	0.0
7	Tihidi	0.0	20	Dharakote	0.0	9	Ghasipura	0.0	8	Raighar	0.0	13	Lathikata	0.0
<b>Avg 0.0</b>			21	Sheragada	0.0	10	Hatadihi	0.0	9	Jharigaon	0.0	14	Bonai	0.0
<b>5. BALANGIR</b>			22	Sorada	0.0	11	Champua	0.0	10	Chandahandi	0.0	15	Lahunipara	0.0
1	Balangir	0.0	<b>Avg 0.0</b>			12	Joda	0.0	<b>Avg 0.0</b>			16	Gurundia	0.0
2	Puintala	0.0	<b>12. JAGATSingHPUR</b>			13	Jhumpura	0.0	<b>24. NAYAGARH</b>			17	Koira	0.0
3	Gudvella	0.0	1	Jagatsinghpur	0.0	<b>Avg 0.0</b>			1	Bhapur	0.0	<b>Avg 0.0</b>		
4	Duduka	0.0	2	Biridi	0.0	<b>19. KHORDHA</b>			2	Daspalla	0.0			
5	Deogaon	0.0	3	Raghunathpur	0.0	1	Balianta	0.0	3	Gania	0.0			
6	Loisingha	0.0	4	Balikuda	0.0	2	Balipatna	0.0	4	Khandapara	0.0			
7	Patnagarh	0.0	5	Naugaon	0.0	3	Bhubaneswar	0.0	5	Nayagarh	0.0			
8	Belpada	0.0	6	Tirtol	0.0	4	Jatani	0.0	6	Nuagaon	0.0			
9	Khaprakhol	0.0	7	Kujanga	0.0	5	Banapur	0.0	7	Odagaon	0.0			
10	Titilagarh	0.0	8	Erasama	0.0	6	Begunia	0.0	8	Ranpur	0.0			
11	Tureikela	0.0	<b>Avg 0.0</b>			7	Bolagarh	0.0	<b>Avg 0.0</b>					
12	Bangomunda	0.0	<b>13. JAJPUR</b>			8	Chilika	0.0	<b>25. NUAPADA</b>					
13	Muribahal	0.0	1	Jajpur	0.0	9	Khordha	0.0	1	Boden	0.0			
14	Saintala	0.0	2	Binjharpur	0.0	10	Tangi	0.0	2	Khariar	0.0			
<b>Avg 0.0</b>			3	Dasarathpur	0.0	<b>Avg 0.0</b>			3	Komna	0.0			
<b>6. BOUDH</b>			4	Korei	0.0	<b>20. KORAPUT</b>			4	Nuapada	0.0			
1	Boudh	0.0	5	Danagadi	0.0	1	Koraput	0.0	5	Sinapali	0.0			
2	Kantamal	0.0	6	Sukinda	0.0	2	Lamatapur	0.0	<b>Avg 0.0</b>					
3	Harabhanga	0.0	7	Rasulpur	0.0	3	Pottangi	0.0	<b>26. PURI</b>					
<b>Avg 0.0</b>			8	Dharmasala	0.0	4	Bandhugaon	0.0	1	Astarang	0.0			
<b>7. CUTTACK</b>			9	Badachana	0.0	5	Nandapur	0.0	2	Brahmagiri	0.0			
1	Athagarh	0.0	10	Bari	0.0	6	Dasmantpur	0.0	3	Delang	0.0			
2	Banki-Dampada	0.0	<b>Avg 0.0</b>			7	Narayanpatna	0.0	4	Gop	0.0			
3	Barang	0.0	<b>14. JHARSUGUDA</b>			8	Laxmipur	0.0	5	Kakatpur	0.0			
4	Badamba	0.0	1	Jharsuguda	0.0	9	Similiguda	0.0	6	Kanas	0.0			
5	Cuttack Sadar	0.0	2	Kolabira	0.0	10	Jeypore	0.0	7	Krushnaprasad	0.0			
6	Kantapada	0.0	3	Laikera	0.0	11	Kotpad	0.0	8	Nimapara	0.0			
7	Mahanga	0.0	4	Kirmira	0.0	12	Kundra	0.0	9	Pipili	0.0			
8	Niali	0.0	5	Lakhanpur	0.0	13	Borigumma	0.0	10	Puri	0.0			
9	Nischintakoili	0.0	<b>Avg 0.0</b>			14	Boipariguda	0.0	11	Satyabadi	0.0			
10	Narasinghpur	0.0	<b>15. KALAHANDI</b>			<b>Avg 0.0</b>			<b>Avg 0.0</b>					
11	Salepur	0.0	1	Bhabanipatna	0.0									
12	Tangi-Choudwar	0.0	2	Kesinga	0.0									
13	Tigiria	0.0	3	Karlamunda	0.0									
<b>Avg 0.0</b>														