



# Flood Bulletin,2023

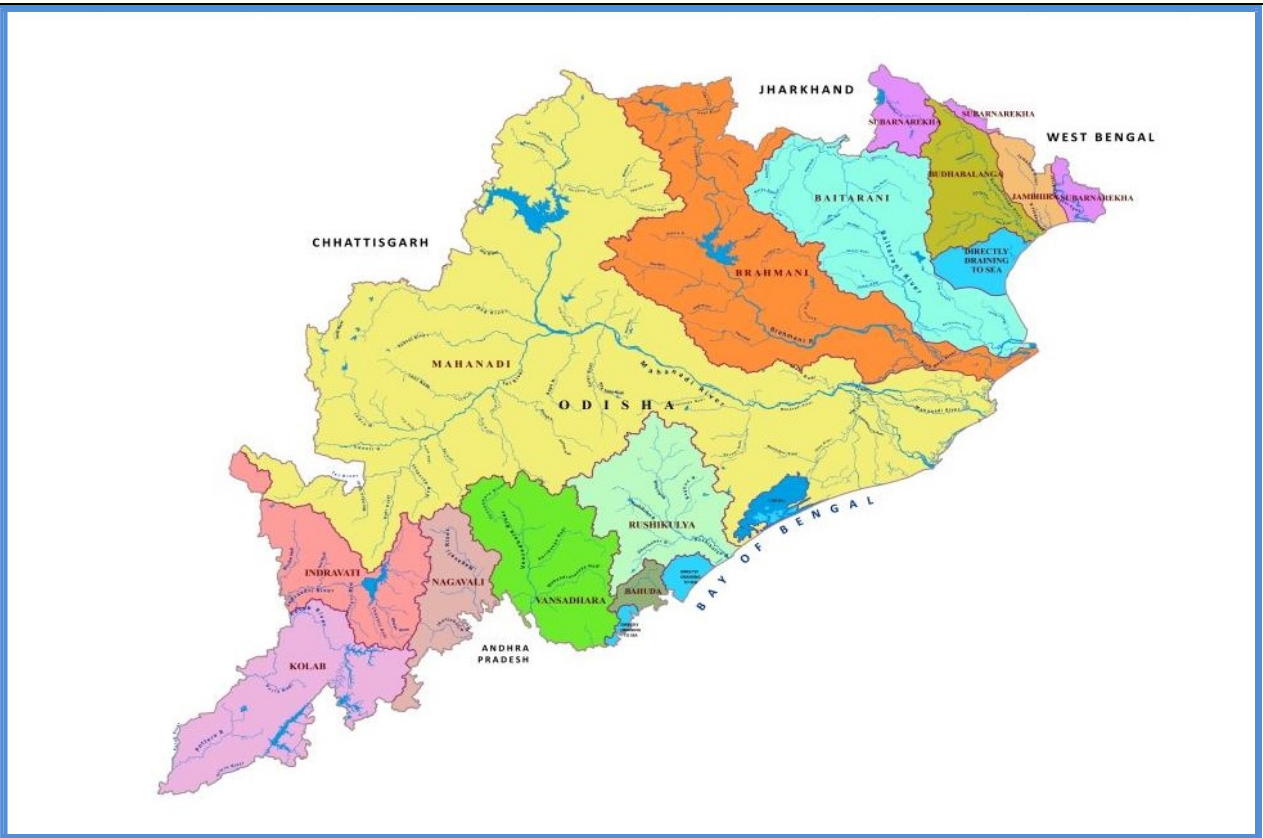
Government of Odisha

## Department of Water Resources

Volume No.146

Date: 24.10.2023

Time: 14:00Hr



### Contents

- Status of River Gauge
- Status of Reservoirs
- IMD Weather Bulletin
- River Discharge
- Rainfall Situation
- IMD Forecast

### Flood Cell

Office of the Engineer-in-Chief, Water Resources, Odisha  
Secha Sadan, Bhubaneswar  
Tel:0674-2395951,2395953e-Mail:[floodcelleicwr@gmail.com](mailto:floodcelleicwr@gmail.com)  
url: [dowr.odisha.gov.in](http://dowr.odisha.gov.in) & [dowrodisha.gov.in](http://dowrodisha.gov.in)

## Status of Gauge (in m)

Name of River	Gauge Site	Danger Level (DL)	Warning Level	Time (Hrs)	Present Level	Trend	(wrt DL)	Highest Recorded Level	
								Level	Date
Mahanadi	Khairmal	109.0	108.0	12:00	101.10	S	-7.90	108.31	19.09.08
	Tikarpara	-	-	12:00	55.49	S	-	74.98	30.08.82
	Naraj (IB)	26.41	25.41	12:00	21.77	F	-4.64	27.60	31.08.82
Kusabhadra	Nimapara	10.76	9.85	12:00	3.58	S	-7.18	11.60	31.08.82
Devi	Alipingala	11.76	10.85	12:00	2.02	S	-9.74	13.05	20.09.08
Brahmani	Panposh	178.42	177.51	12:00	171.58	S	-6.84	181.44	24.09.11
	Rengali	88.0	-	12:00	77.18	S	-10.82	92.25	18.08.75
	Talcher	62.91	-	12:00	53.80	S	-9.11	65.53	19.08.75
	Jenapur	23.0	22.0	12:00	18.35	F	-4.65	24.78	20.08.75
	Indupur	8.23	-	12:00	3.08	S	-5.15	-	-
Baitarani	Champua	376.41	375.33	12:00	371.46	S	-4.95	379.06	23.09.11
	Swampatna	311.1	-	12:00	305.04	S	-6.06	315.66	14.08.75
	Anandapur	38.36	37.44	12:00	32.92	S	-5.44	41.35	23.09.11
	Akhuapada	18.33	17.83	12:00	17.30	S	-1.03	21.95	16.08.60
Budhabalanga	Chandanpur	-	-	12:00	81.40	S	-	85.80	09.11.95
	Baripada	30.92	29.7	12:00	21.54	S	-9.38	34.82	13.10.13
	Balimundali	-	-	12:00	36.42	R	-	42.20	1995
	NH5-Govindapur	8.13	7.21	12:00	1.00	F	-7.13	9.67	12.10.73
Subarnarekha	Jamshedpur	123.5	122.5	12:00	115.66	R	-7.84	129.82	12.10.73
	Jamsolaghat	49.16	48.32	12:00	43.78	R	-5.38	56.91	03.09.78
	Rajghat	10.36	9.45	12:00	4.23	S	-6.13	12.69	19.06.08
Jalaka	Mathani Road Bridge	6.50	6.0	12:00	3.5	S	-3.00	7.31	22.09.21
Rushikulya	Sorada	81.99	80.99	12:00	77.77	S	-4.22	83.21	04.11.90
	Madhabarida	60.65	-	12:00	56.13	S	-4.52	61.44	18.10.99
	Purusottampur	16.84	15.84	12:00	11.66	S	-5.18	19.60	04.11.90
Vansadhara	Gudari	-	-	12:00	114.04	S	-	121.82	17.09.80
	Gunupur	84.0	83.0	12:00	80.28	S	-3.72	88.75	17.09.80
	Kashinagar	54.6	54.1	12:00	52.34	S	-2.26	58.93	18.09.80

## Status of Major Reservoirs

Name of the Reservoir	Name of the District	Dead Storage Level	FRL/ MWL	Reservoir Level	LS Available/ Live Storage Capacity (%)	Last Year (2022) R.L./ Live Storage Avl (%)	Inflow	Total Outflow	Gates Open (Nos)/ Trend
1.Hirakud 12:00Hr	Sambalpur	590.0 ft	630.0ft	628.39 ft	<u>4511.0 Mcum</u> 4822.83Mcum (93.5%)	<u>629.9 ft</u> 99.5%	0.0 Cusec	10,712.0 Cusec	00/98 Falling
2.Rengali 06:00Hr	Angul	109.72 m	<u>123.5 m</u> 125.4 m	123.22 m.	<u>332187.0 Ham</u> 341371.0 Ham (97.3%)	<u>123.3 m</u> 97.6%	201.17 Cumec	190.18 Cumec	00/27 Rising
3.U. Indravati 06:00Hr	Nabrangpur	625.0 m	<u>642 m</u> 643 m	637.30 m.	<u>96090.0 Ham</u> 148550.0 Ham (64.7%)	<u>639.1 m</u> 76.8%	44.38 Cumec	122.93 Cumec	00/12 Falling
4.UpperKolab 08:00Hr	Koraput	844.0 m	858.0 m	855.95 m.	<u>740.94 Mcum</u> 935.0 Mcum (79.2%)	<u>855.8 m</u> 77.9%	29.78 Cumec	51.74 Cumec	00/11 Falling
5.Balimela 08:00Hr	Malkangiri	1440.0 ft	<u>1516 ft</u> 1518 ft	1489.20 ft	<u>142256.0 Ham</u> 267600.0 Ham (53.2%)	<u>1484.7 ft</u> 46.4%	3373.0 Cusec	3373.24 Cusec	00/12 Falling
6.Machhkund (Jalaput) 08:00Hr	Malkangiri	2685.0 ft	2750.0 ft	2731.90 ft	<u>49178.0 Ham</u> 89254.7 Ham (55.1%)	<u>2741.1 ft</u> 75.5%	815.00 Cusec	1510.0 Cusec	02/12 Falling
7.Salandi 06:00Hr	Keonjhar	50.24 m	<u>82.3 m</u> 83.21m	78.42 m.	<u>43472.0 Ham</u> 55650.0 Ham (78.1%)	<u>78.6 m</u> 79.0%	36.74 Cumec	33.97 Cumec	02/11 Falling
8.LowerIndra 08:00Hr	Nuapada	251.0 m	<u>265 m</u> 265 m	263.35 m.	<u>26831.70 Ham</u> 31425.2Ham (85.4%)	<u>262.3 m</u> 73.4%	10.34 Cumec	34.41 Cumec	00/09 Falling

**Note:** Total Outflow consists of Irrigation, Spillway, Sluice, Power generation, Industrial & other supply and Evaporation loss \*U Indravati-7 gates, Muran Dam-5 gates (Total-12 Nos)

## Average Inflow into & Outflow from Reservoir

Reservoir	Inflow	Outflow	Observation Period
Hirakud	10,724.0 Cusec	12,313.0 Cusec	During last 24 Hrs ending 08:00Hrs of 24.10.2023
Rengali	201.17 Cumec	190.18 Cumec	During last 24 Hrs ending 06:00Hrs of 24.10.2023

## Travel Time of Flow in Mahanadi River

Hirakud Dam	115 km	Khairmal	106 km	Barmul	95 km	Mundali
	12-18 Hrs		12-16 Hrs		12-16 Hrs	

## River Discharge

Name of the River	G&D Site	Time (Hrs)	Discharge (cusec)
<b>Mahanadi (Up Stream Hirakud)</b>	Champa	12:00	6,080
	Tarapur	12:00	BG
	Saradihi	12:00	20,640
	Kalma	09:00	NR
	Deogaon	12:00	735
<b>Mahanadi (Down Stream Hirakud)</b>	Khairmal	12:00	38,000
	Barmul	12:00	30,300
	Mundali	12:00	BG
<b>Tel</b>	Patharla	12:00	17,969
<b>Baitarani</b>	NH-5 Akhuapada	08:00	NR
<b>Brahmani</b>	Pankapal	08:00	12,599
<b>Subarnarekha</b>	Rajghat	09:00	NR
<b>Rushikulya</b>	Purusottampur	09:00	NR

## Status of Medium Reservoir

Sl.	Name of Dam / Reservoir	Available Live Storage (%) (Gates Open)	Sl.	Name of Dam / Reservoir	Available Live Storage (%) (Gates Open)	Sl.	Name of Dam / Reservoir	Available Live Storage (%) (Gates Open)
1.	Badanalla	67.4%	17.	Harabhangi	25.0%	33.	Ret	86.7%
2.	Baghalati	21.4%	18.	Harihorejore	93.4%	34.	Rukura	89.7%
3.	Baghua	44.2%	19.	Jambira*	4.6%	35.	Saipala	78.7%
4.	Bankabahal	59.5%	20.	Jharbandh*	85.1%	36.	Salia*	93.1%
5.	Bhanjanagar	69.6%	21.	Kalo	74.2%	37.	Sapua*	92.7%
6.	Bhaskel*	42.8%	22.	Kanjhari	86.7%	38.	Saraphgarh	85.8%
7.	Budhabudhiani	69.0%	23.	Kansabahal	94.9%	39.	Satiguda*	89.6%
8.	Dadarghati*	96.6%	24.	Khadkhai	87.6%	40.	Soroda*	54.8%
9.	Daha	68.1%	25.	Kuanria	61.1%	41.	Sunder	81.0%
10.	Deo	93.1% (3)	26.	Mandira	98.8% (3)	42.	Sunei	81.6%
11.	Derjang	90.6%	27.	Manjore	92.3%	43.	Talsara	90.2%
12.	Dhanei*	59.9%	28.	Nesa*	69.9%	44.	Telengiri	78.4%
13.	Dumberbahal	73.8%	29.	Pilasalki*	91.9%	45.	Titlagarh	81.4%
14.	Ghodahada	9.6%	30.	Pitamahal*	99.9%	46.	Upper Jonk	76.8%
15.	Gohira	92.6%	31.	Ramial	83.4%	47.	Upper Suktel*	89.5%
16.	Haladia	46.3%	32.	Remal	80.7%			

Note: \*Un-gated Dams (13 Nos.)

Above 75%   
 Above 90%

**Medium Reservoir: 47 Nos.**

(Gated-34, Un-Gated-13),

Below 50%: 7 Nos., Between 50% to 75%: 11 Nos., Above 75%: 29 Nos.

## AVAILABLE LIVE STORAGE CAPACITY OF MAJOR & MEDIUM RESERVOIRS (24.10.2023)

### Major

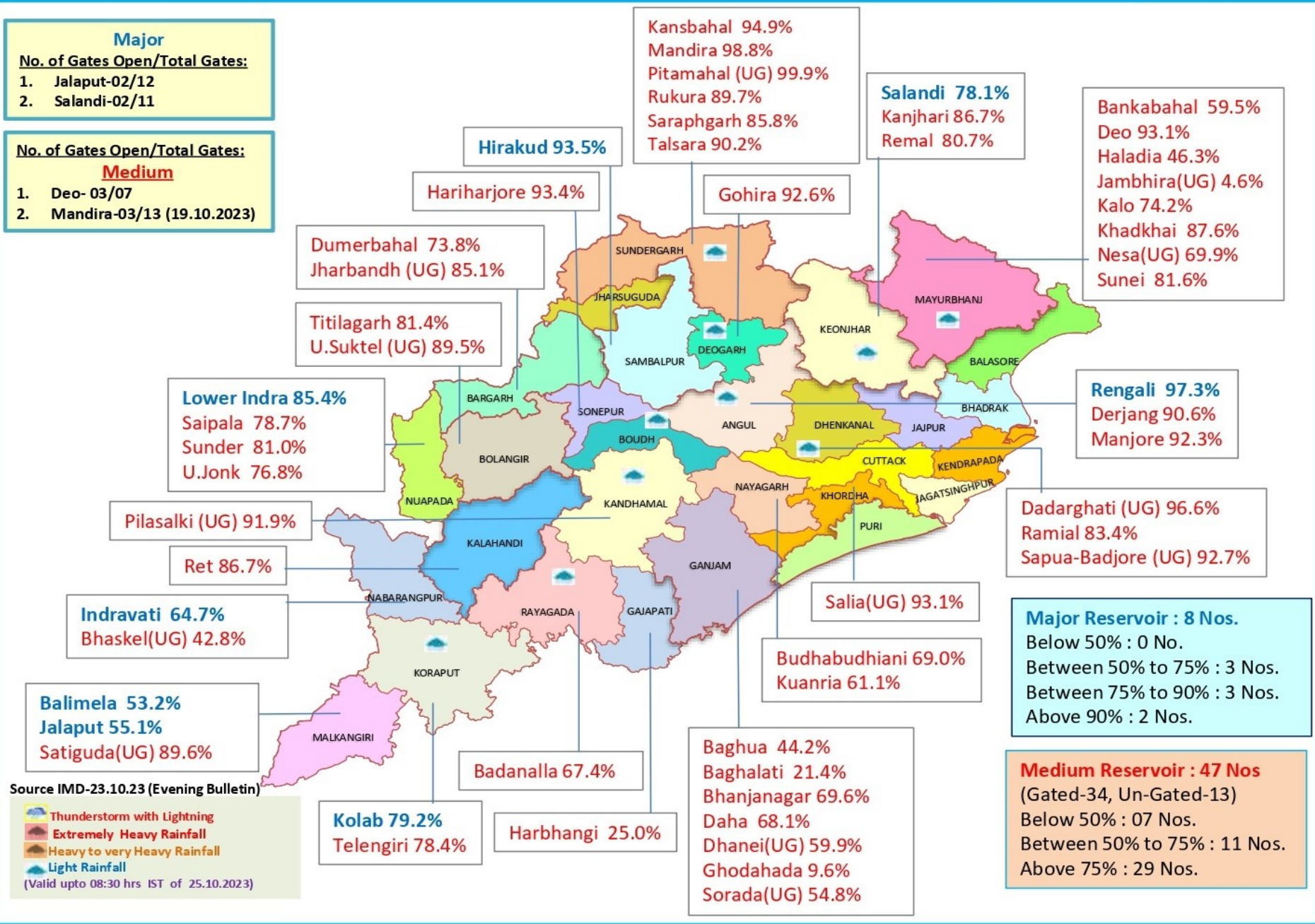
#### No. of Gates Open/Total Gates:

1. Jalaput-02/12
2. Salandi-02/11

#### No. of Gates Open/Total Gates:

### Medium

1. Deo- 03/07
2. Mandira-03/13 (19.10.2023)

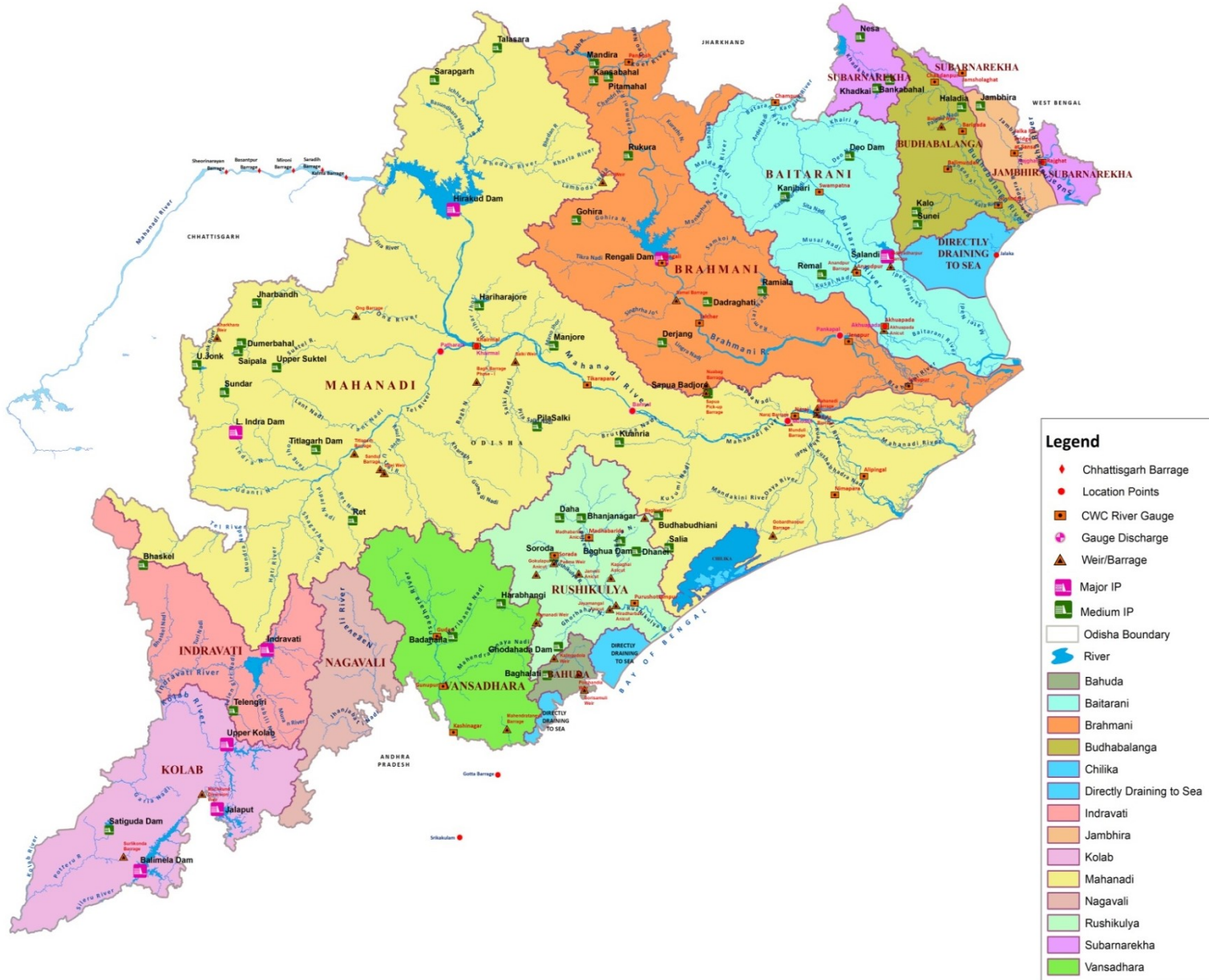


Source IMD-23.10.23 (Evening Bulletin)

- Thunderstorm with Lightning
- Extremely Heavy Rainfall
- Heavy to very Heavy Rainfall
- Light Rainfall

(Valid upto 08:30 hrs IST of 25.10.2023)

# MAJOR & MEDIUM RESERVOIRS , G & D SITES IN ODISHA



भारत सरकार  
 भारत मौसम विज्ञान विभाग  
 (पृथ्वी विज्ञान मंत्रालय)  
 पता : मौसम विज्ञान केन्द्र, भुवनेश्वर  
 फोन न. २५९६०१० &  
 २५९६११६  
 फैक्स न. २५९६०१० &  
 २५९६०९३



GOVERNMENT OF INDIA  
 INDIA METEOROLOGICAL DEPARTMENT  
 (Ministry of Earth Sciences)  
 METEOROLOGICAL CENTRE  
 BIJUPATNAIK AIRPORT  
 BHUBANESWAR-751020  
 TELE: 2596010 & 2596116  
 FAX : 2596010 & 2596093  
 E-MAIL : imdbbsr@ori.nic.in

Ref No: FM/HM Bulletin/146

Dated: 24/10/2023  
 Time of Issue: 1300 hrs IST

## HYDROMET BULLETIN

### 1) Synoptic Situation

- The Severe Cyclonic Storm "Hamoon" (pronounced as Hamoon) over Northwest Bay of Bengal moved east-northeastwards with a speed of 23 kmph during past 6 hours, intensified into a Very Severe Cyclonic Storm and lay centered at 0830 hours IST of 24th October over Northwest and adjoining Northeast Bay of Bengal, near latitude 20.0°N and longitude 89.5°E, about 290 km east of Paradip (Odisha), 270 km southeast of Digha (West Bengal), 230 km south-southwest of Khepupara (Bangladesh) and 350 km southwest of Chittagong (Bangladesh). It is very likely to maintain its intensity of Very Severe Cyclonic Storm for a few hours. Thereafter, it is likely to weaken gradually while moving northeastwards and cross Bangladesh coast between Khepupara and Chittagong around evening of 25th October as a cyclonic storm with wind speed of 65 to 75 kmph gusting to 85 kmph.

### a) River Sub-basin-wise Quantitative Precipitation Forecast (QPF)

S. No.	Basin Name	Sub-basin Name	QPF (mm)						
			Day-1 (24.10.23)	Day-2 (25.10.23)	Day-3 (26.10.23)	Day-4 (27.10.23)	Day-5 (28.10.23)	Day-6 (29.10.23)	Day-7 (30.10.23)
1	BAITRANI	BT	0.1-10	0.1-10	0	0	0	0	0
2	LOWER BRAHMANI	LB	0.1-10	0.1-10	0	0	0	0	0
3	UPPER BRAHMANI	UB	0.1-10	0	0	0	0	0	0
4	BHURABALANG	BB	0.1-10	0.1-10	0	0	0	0	0
5	LOWER MAHANADI	LM	0.1-10	0	0	0	0	0	0
6	NAGAVALI	NV	0.1-10	0.1-10	0	0	0	0	0
7	RUSHIKULIYA	RK	0.1-10	0.1-10	0	0	0	0	0
8	SUBERNAREKHA	SR	0.1-10	0	0	0	0	0	0
9	UPPER MAHANADI	UM	0	0	0	0	0	0	0
10	VAMSDHARA	VD	0.1-10	0	0	0	0	0	0

PF categories (mm)	0	0.1-10	11-25	26-37	38-50	51-75	76-100	>100
--------------------	---	--------	-------	-------	-------	-------	--------	------



## 2b) River Sub-basin-wise Intensity and Distribution of QPF

S.	Basin Name	Sub-basin Name	Intensity (I) and Spatial Distribution (D)													
			Day-1 (24.10.23)		Day-2 (25.10.23)		Day-3 (26.10.23)		Day-4 (27.10.23)		Day-5 (28.10.23)		Day-6 (29.10.23)		Day-7 (30.10.23)	
			I	D	I	D	I	D	I	D	I	D				
1	BAITRANI	BT	L	ISOL	L	ISOL	M.Dry	DRY	M.Dry	DRY	M.Dry	DRY	M.Dry	DRY	M.Dry	DRY
2	LOWER BRAHMANI	LB	L	ISOL	L	ISOL	M.Dry	DRY	M.Dry	DRY	M.Dry	DRY	M.Dry	DRY	M.Dry	DRY
3	UPPER BRAHMANI	UB	L	ISOL	M.Dry	DRY	M.Dry	DRY	M.Dry	DRY	M.Dry	DRY	M.Dry	DRY	M.Dry	DRY
4	BHURABALANG	BB	L	ISOL	L	ISOL	M.Dry	DRY	M.Dry	DRY	M.Dry	DRY	M.Dry	DRY	M.Dry	DRY
5	LOWER MAHANADI	LM	L	ISOL	M.Dry	DRY	M.Dry	DRY	M.Dry	DRY	M.Dry	DRY	M.Dry	DRY	M.Dry	DRY
6	NAGAVALI	NV	L	ISOL	L	ISOL	M.Dry	DRY	M.Dry	DRY	M.Dry	DRY	M.Dry	DRY	M.Dry	DRY
7	RUSHIKULYA	RK	L	ISOL	L	ISOL	M.Dry	DRY	M.Dry	DRY	M.Dry	DRY	M.Dry	DRY	M.Dry	DRY
8	SUBERNAREKHA	SR	L	ISOL	M.Dry	DRY	M.Dry	DRY	M.Dry	DRY	M.Dry	DRY	M.Dry	DRY	M.Dry	DRY
9	UPPER MAHANADI	UM	M.Dry	DRY	M.Dry	DRY	M.Dry	DRY	M.Dry	DRY	M.Dry	DRY	M.Dry	DRY	M.Dry	DRY
10	VAMSDHARA	VD	L	ISOL	M.Dry	DRY	M.Dry	DRY	M.Dry	DRY	M.Dry	DRY	M.Dry	DRY	M.Dry	DRY

Spatial Distribution		
DRY	Dry	No station reported rainfall
ISOL	One or two places	25% or less number of stations recorded rainfall 2.5 mm
SCT	At a few places	26%-50% number of stations recorded rainfall 2.5 mm
FWS	At many places	51%-75% number of stations recorded rainfall 2.5 mm
WS	At most places	76%-100% number of stations recorded rainfall 2.5 mm

Intensity					
M.Dry	NIL	0 cm	VL	Very Light Rainfall	Trace
L	Light Rainfall	Upto 1 cm	M	Moderate Rainfall	2-6 cm
H	Heavy Rainfall	7-11 cm	VH	Very Heavy rainfall	12-20 cm
EH	Extremely Heavy Rainfall	21 cm or more			
ExH	Exceptionally Heavy Rainfall	When the amount is a value near about the highest recorded rainfall at or near the station for the month or season. However, this term will be used only when the actual rainfall amount exceeds 12 cm.			

### 3) River Sub-basin-wise Heavy Rainfall Warning

S. No	Basin Name	Sub-basin Name	Day-1 (24.10.23)		Day-2 (25.10.23)		Day-3 (26.10.23)		Day-4 (27.10.23)		Day-5 (28.10.23)		Day-6 (29.10.23)		Day-7 (30.10.23)	
			I	D	I	D	I	D	I	D	I	D	I	D	I	D
1	BAITRANI	BT	NIL	NIL	NIL	NIL	NIL	NIL	NIL	NIL	NIL	NIL	NIL	NIL	NIL	NIL
2	LOWER BRAHMANI	LB	NIL	NIL	NIL	NIL	NIL	NIL	NIL	NIL	NIL	NIL	NIL	NIL	NIL	NIL
3	UPPER BRAHMANI	UB	NIL	NIL	NIL	NIL	NIL	NIL	NIL	NIL	NIL	NIL	NIL	NIL	NIL	NIL
4	BHURABALAN G	BB	NIL	NIL	NIL	NIL	NIL	NIL	NIL	NIL	NIL	NIL	NIL	NIL	NIL	NIL
5	LOWER MAHANADI	LM	NIL	NIL	NIL	NIL	NIL	NIL	NIL	NIL	NIL	NIL	NIL	NIL	NIL	NIL
6	NAGAVALI	NV	NIL	NIL	NIL	NIL	NIL	NIL	NIL	NIL	NIL	NIL	NIL	NIL	NIL	NIL
7	RUSHIKULIYA	RK	NIL	NIL	NIL	NIL	NIL	NIL	NIL	NIL	NIL	NIL	NIL	NIL	NIL	NIL
8	SUBERNAREK HA	SR	NIL	NIL	NIL	NIL	NIL	NIL	NIL	NIL	NIL	NIL	NIL	NIL	NIL	NIL
9	UPPER MAHANADI	UM	NIL	NIL	NIL	NIL	NIL	NIL	NIL	NIL	NIL	NIL	NIL	NIL	NIL	NIL
10	VAMSDHARA	VD	NIL	NIL	NIL	NIL	NIL	NIL	NIL	NIL	NIL	NIL	NIL	NIL	NIL	NIL

Spatial Distribution		
DRY	Dry	No station reported rainfall
ISOL	One or two places	25% or less number of stations recorded rainfall 2.5 mm
SCT	At a few places	26%-50% number of stations recorded rainfall 2.5 mm
FWS	At many places	51%-75% number of stations recorded rainfall 2.5 mm
WS	At most places	76%-100% number of stations recorded rainfall 2.5 mm

Intensity			
M.Dry	NIL	0 cm	
L	Light Rainfall	Upto 1 cm	VL Very Light Rainfall Trace
H	Heavy Rainfall	7-11 cm	M Moderate Rainfall 2-6 cm
EH	Extremely Heavy Rainfall	21 cm or more	VH Very Heavy rainfall 12-20 cm
ExH	Exceptionally Heavy Rainfall	When the amount is a value near about the highest recorded rainfall at or near the station for the month or season. However, this term will be used only when the actual rainfall amount exceeds 12 cm.	

#### 4) River Sub-basin-wise Probabilistic QPF

Basin Name	Sub-basin Name	QPF Probability (%)																																							
		Day-1 (24.10.2023) (QPF categories)					Day-2 (25.10.2023) (QPF categories)					Day-3 (26.10.2023) (QPF categories)					Day-4 (27.10.2023) (QPF categories)					Day-5 (28.10.2023) (QPF categories)					Day-6 (29.10.2023) (QPF categories)					Day-7 (30.10.2023) (QPF categories)									
		0	0.1-10	11-25	26-50	51-100	>100	0	0.1-10	11-25	26-50	51-100	>100	0	0.1-10	11-25	26-50	51-100	>100	0	0.1-10	11-25	26-50	51-100	>100	0	0.1-10	11-25	26-50	51-100	>100	0	0.1-10	11-25	26-50	51-100	>100				
BAITRANI	B T	Green	Yellow					Green	Yellow					Red							Red							Red							Red						
LOWER BRAHMANI	L B	Green	Yellow					Green	Yellow					Red							Red							Red							Red						
UPPER BRAHMANI	U B	Green	Yellow					Red						Red							Red							Red							Red						
BHURABALANG	B B	Green	Yellow					Green	Yellow					Red							Red							Red							Red						
LOWER MAHANADI	L M	Green	Yellow					Red						Red							Red							Red							Red						
NAGAVALI	N V	Green	Yellow					Green	Yellow					Red							Red							Red							Red						
RUSHIKULIYA	R K	Green	Yellow					Green	Yellow					Red							Red							Red							Red						
SUBERNAREKHA	S R	Green	Yellow					Red						Red							Red							Red							Red						
UPPER MAHANADI	U M	Red						Red						Red							Red							Red							Red						
VAMSDHARA	V D	Green	Yellow					Red						Red							Red							Red							Red						



**5) Station-wise significant rainfall recorded at 0830 hrs IST of today**

S. N O.	NAME OF SUB-BASIN	NAME OF STATION AND RAINFALL ( $\geq 55.0$ MM. )
		Nil

**6) River Sub-basin-wise observed Average Areal Precipitation (AAP) of today**

S. No.	Basin Name	Sub-basin Name	AAP (mm)
1	BAITRANI	BT	2.4
2	LOWER BRAHMANI	LB	2.7
3	UPPER BRAHMANI	UB	0.0
4	BHURABALANG	BB	3.6
5	LOWER MAHANADI	LM	1.4
6	NAGAVALI	NV	0.1
7	RUSHIKULIYA	RK	0.4
8	SUBERNAREKHA	SR	1.0
9	UPPER MAHANADI	UM	0.0
10	VAMSDHARA	VD	0.2

(DUTY OFFICER)  
for Scientist-F & Head  
FLOOD MET.OFFICE  
M.C Bhubaneswar



**RAINFALL FOR PAST 24 HRS ENDING AT 0830 HRS OF DATE**

**Date:-24.10.2023**

SI No	Name of Stations	Rainfall (in mm)
<b>UPPER BRAHMANI</b>		
1	MANORA	0.0
2	LAHUNIPARA	0.0
3	PALLAHARA	0.0
4	PANPOSH	0.0
5	RAJGANGA PUR	0.0
6	BARKOTE	0.0
7	BONAI	0.0
8	DEOGARH	0.0
9	MANDIRADAM	0.0
10	TENSA	0.0
11	LATHIKATA	0.0
12	JODA	0.0
13	GURUNDIA	0.0
14	PALKOT	0.0
15	RAIDIH	0.0
16	KURU	0.0
17	LOHARDAGA	0.0
18	MANDAR	0.0
19	KOLEBIRA	0.0
20	KURDEG	0.0
21	SIMDEGA	0.0
22	JASHPURNAGAR	0.0
23	RAURKELA(Airport)	0.0
<b>LOWER BRAHMANI</b>		
1	REAMAL	0.0
2	RENGALI	0.0
3	ALTUMA	0.0
4	ANGUL (IMD)	1.0
5	BATAGAON	NR
6	CHHENDIPADA	0.0
7	DHENKANAL	0.0
8	DHENKANAL (PTO)	0.0
9	HINDOL	0.0
10	JENAPUR	2.8
11	KAMAKHYA NGR	0.0
12	NAKTIDEUL	0.0
13	SUKINDA	9.0
14	TALCHER	0.0
15	TELKOI	0.0
16	KANKADAHAD	0.0
17	JAJPUR	15.0
18	JAJPUR (PTO)	4.2
19	RAJ KANIKA	13.0
20	AUL	28.0
21	RAJNAGAR	21.0
22	BANARPAL	0.0
23	KANIHA	5.4
24	PARJANG	0.0
25	GONDIA	0.0
26	BHUBAN	0.0
27	DANAGADI	2.0
28	KOREI	2.0
29	CHANDIKHOL	5.0
30	BARI	8.2
31	BINJHARPUR	5.0

SI No	Name of Stations	Rainfall (in mm)
<b>BAITARANI</b>		
1	BONTH	0.0
2	AKHUAPADA	1.2
3	ANANDAPUR	0.6
4	CHAMPUA	0.0
5	CHANDBALI (IMD)	31.4
6	DAITARI	0.0
7	GHATGAON	0.0
8	JHUMPURA	0.0
9	JOSHIPUR	0.0
10	KARANJIA	0.0
11	KEON-GARH (IMD)	0.0
12	KEONJHAR (CWC)	0.0
13	SWAMPATNA	0.0
14	THAKUR-DA(BDO)	0.0
15	THAKUR-DA (CWC)	0.0
16	SAHARPADA	0.0
17	KAPTIPADA	0.0
18	HATADIHI	0.0
19	BHADRAK	4.1
20	BHANDARIPOKHARI	3.0
21	BANSPAL	0.0
22	GHASIPURA	0.0
23	SUKRULI	0.0
24	RARUANA	0.0
25	DHAMNAGAR	4.0
26	TIHIDI	5.0
27	HARICHANDANPUR	0.0
<b>NAGAVALI</b>		
1	K.SINGHPUR	0.0
2	RAYAGADA	0.0
3	SANKIL RD BRIDGE	NR
4	JANJHAVATI RDB	NR
5	JAGGAGUDA	NR
6	SRIKAKULAM	0.0
7	BANDHUGAN	0.0
8	SALUR	0.0
9	KOLNARA	0.0
10	Komarada	0.0
11	Jiyyammavalasa	0.0
12	Garugubilli	0.0
13	Parvathipuram	0.0
14	Bobbili	0.0
15	Therlam	0.0
16	Pusapatirega	0.0
17	Denkada	0.0
18	Vizianagaram	0.0
19	Vepada	0.0

SI No	Name of Stations	Rainfall (in mm)
<b>RUSHIKULYA</b>		
1	BUGUDA	0.0
2	ASKA	0.0
3	BERHAMPUR	0.0
4	BHANJANAGAR	0.0
5	CHHATRAPUR	0.0
6	DARINGIBADI	0.0
7	GOPALPUR (IMD)	0.0
8	MADHABARIDA	0.0
9	PUSOTTAMPUR	0.0
10	DIGAPAHANDI	0.0
11	JAGANNATHPRASAD	1.3
12	SORADA	0.0
13	POLASARA	0.0
14	KODALA	0.0
15	RANGEILUNDA	0.0
16	KUKUDAHANDI	0.0
17	PATRAPUR	0.0
18	SANKHEIMUNDI	0.0
19	DHARAKOTE	0.0
20	SHERAGADA	0.0
21	GANJAM	0.0
22	BELAGUNTHA	0.0
23	HINJILI	0.0
<b>VANSADHARA</b>		
1	AMBADOLA	NR
2	BISSAM CUTTACK	0.0
3	GOTTA BARRAGE	0.0
4	GUDARI	0.0
5	GUNUPUR	0.0
6	KALINGA-NAM (IMD)	0.0
7	KASHINAGAR	0.0
8	KOTAGARH	0.0
9	KOTRAGUDA	0.0
10	MAHENDRAGARH	0.0
11	MOHANA	0.0
12	PARAKHEMUNDI	0.0
13	R.GUDA	0.0
14	NUAGADA	0.0
15	MUNIGUDA	0.0
16	R.UDAYAGIRI	0.0
17	LANJIGARH	0.0
18	NELIAPUTY	NR
19	SIRJHOLY	NR
20	GUMMA	0.0
21	GOSANI	0.0
22	CHADRAPUR	0.0
23	Balajipeta	0.0

SI No	Name of Stations	Rainfall (in mm)
<b>SUBERNAREKHA</b>		
1	SARASAKANA	0.0
2	BHOGARAI	0.0
3	FEKOGHAT	1.2
4	GHATSILA	0.0
5	JALESWAR	0.0
6	JAMSEDPUR (IMD)	0.0
7	JAMSEDPUR (CWC)	0.0
8	JAMSOLAGHAT	1.4
9	RAIRANG PUR	0.0
10	RAJGHAT	0.8
11	RANCHI	0.0
12	TIRING	0.0
13	BIJATALA	0.0
14	KUSUMI	0.0
15	JAMDA	0.0
16	ARKI	0.0
17	ICAR NAMKUM	0.0
18	ORMANJHI	0.0
19	CHANDIL	0.0
20	KHARSEMA	0.0
21	NIMDIH	0.0
22	CHAIBASA	0.0
23	CHAKRADHARPUR	0.0
24	BAHALDA	0.0
<b>BUDHABALANGA</b>		
1	BALASORE (IMD)	3.2
2	BALASORE (CWC)	0.2
3	BALIMUNDALI	4.2
4	BANGRIPOSHI	0.0
5	BARIPADA (IMD)	21.0
6	BARIPADA (CWC)	8.2
7	CHANDANPUR	0.0
8	JAIPUR	5.2
9	NAWANA	2.2
10	NH-5, GOVINDPUR	0.0
11	NILGIRI	0.0
12	SORO	0.0
13	BETANATI	0.0
14	UDALA	2.0
15	BAHANAGA	0.0
16	KHAIRA	4.0
17	MURUDA	0.0
18	SULIAPADA	4.0
19	G.B.NAGAR	3.0
20	REMUNA	0.0
21	SAMAKHUNTA	0.0
22	BASUDEVPUR	19.0
23	CHANDUA(KULIANA)	0.0
24	RASAGOVINDAPUR	21.0
25	OUPADA	12.0

Source:-Met Centre Bhubaneswar

