

ISOHYETS

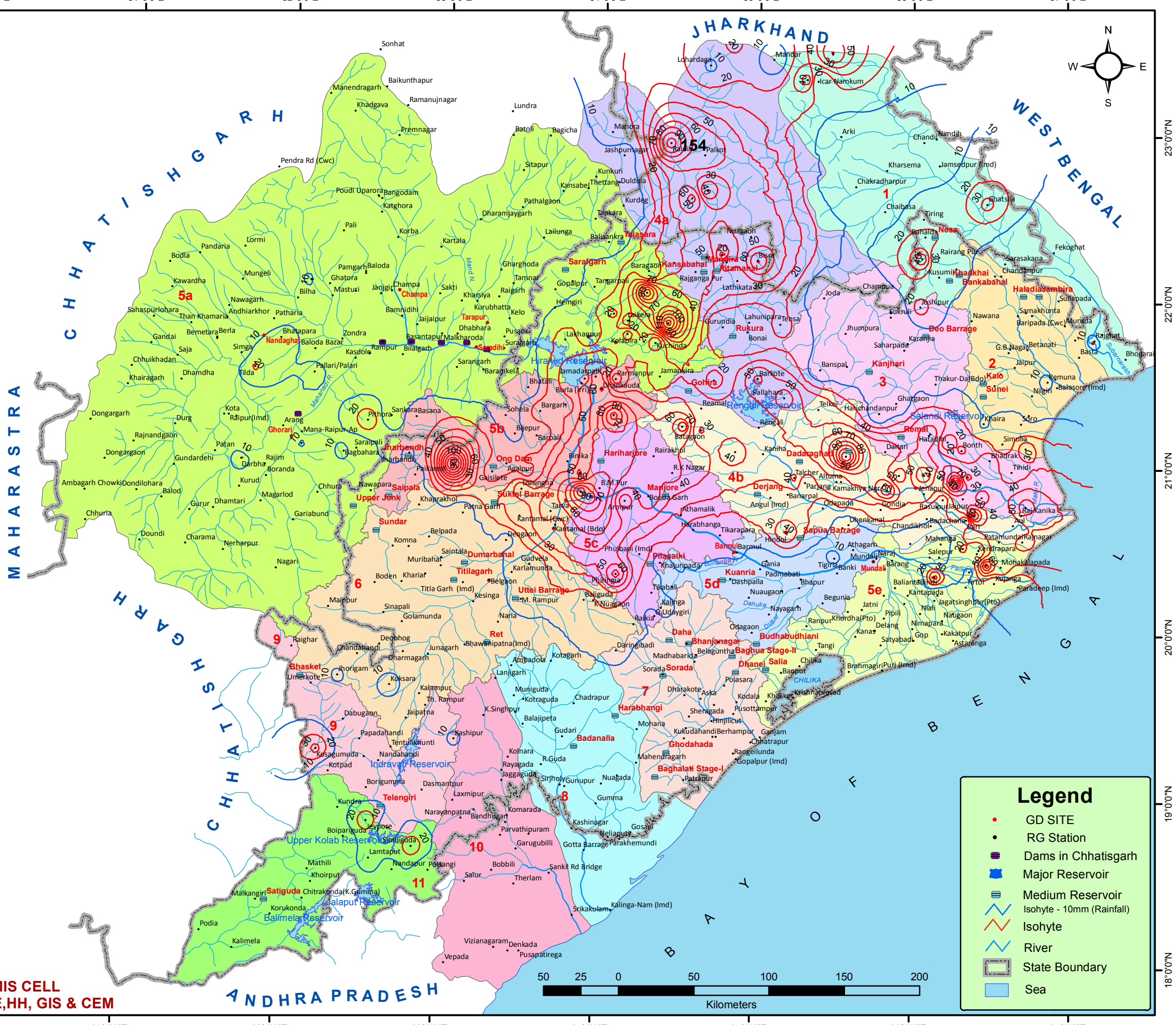
FOR PAST 24 HOURS ENDING AT 0830 HRS OF

02.10.2023

RAINFALL SOURCE STATIONS: IMD, SRC & CWC
BASIN AVG RAINFALL IN MM

Basin_code	SEP_30	OCT_01	OCT_02
1	13.63	11.41	12.58
2	38.64	9.06	5.01
3	19.59	4.24	15.51
4a	13.12	22.02	31.08
4b	11.36	15.62	38.14
5a	6.97	4.80	5.82
5b	9.30	15.26	34.39
5c	9.82	18.55	42.51
5d	5.50	25.06	4.83
5e	14.97	32.53	5.23
6	5.51	3.72	8.98
7	6.97	3.55	1.36
8	4.69	1.80	0.89
9	5.65	0.00	5.51
10	9.04	4.32	1.91
11	3.86	5.09	4.25

Basin	Basin name	Basin code
	SUBARNAREKHA	1
	BURHABALANGA BASIN	2
	BAITARANI BASIN	3
	UPPER BRAHMANI BASIN	4a
	LOWER BRAHMANI BASIN	4b
	UPPER MAHANADI,	5a
	MAHANADI (HIRAKUD - KHAIRMAL)	5b
	MAHANADI (KHAIRMAL - BARMUL)	5c
	MAHANADI (BARMUL - NARAJ)	5d
	MAHANADI DELTA	5e
	TEL BASIN	6
	RUSHIKULYA BASIN	7
	VANSHADHARA	8
	INDRABATI BASIN	9
	NAGAVALI BASIN	10
	KOLAB BASIN,	11



Legend	
	GD SITE
	RG Station
	Dams in Chhattisgarh
	Major Reservoir
	Medium Reservoir
	Isohyte - 10mm (Rainfall)
	Isohyte
	River
	State Boundary
	Sea

FMIS CELL
CE, HH, GIS & CEM