



Flood Bulletin, 2026

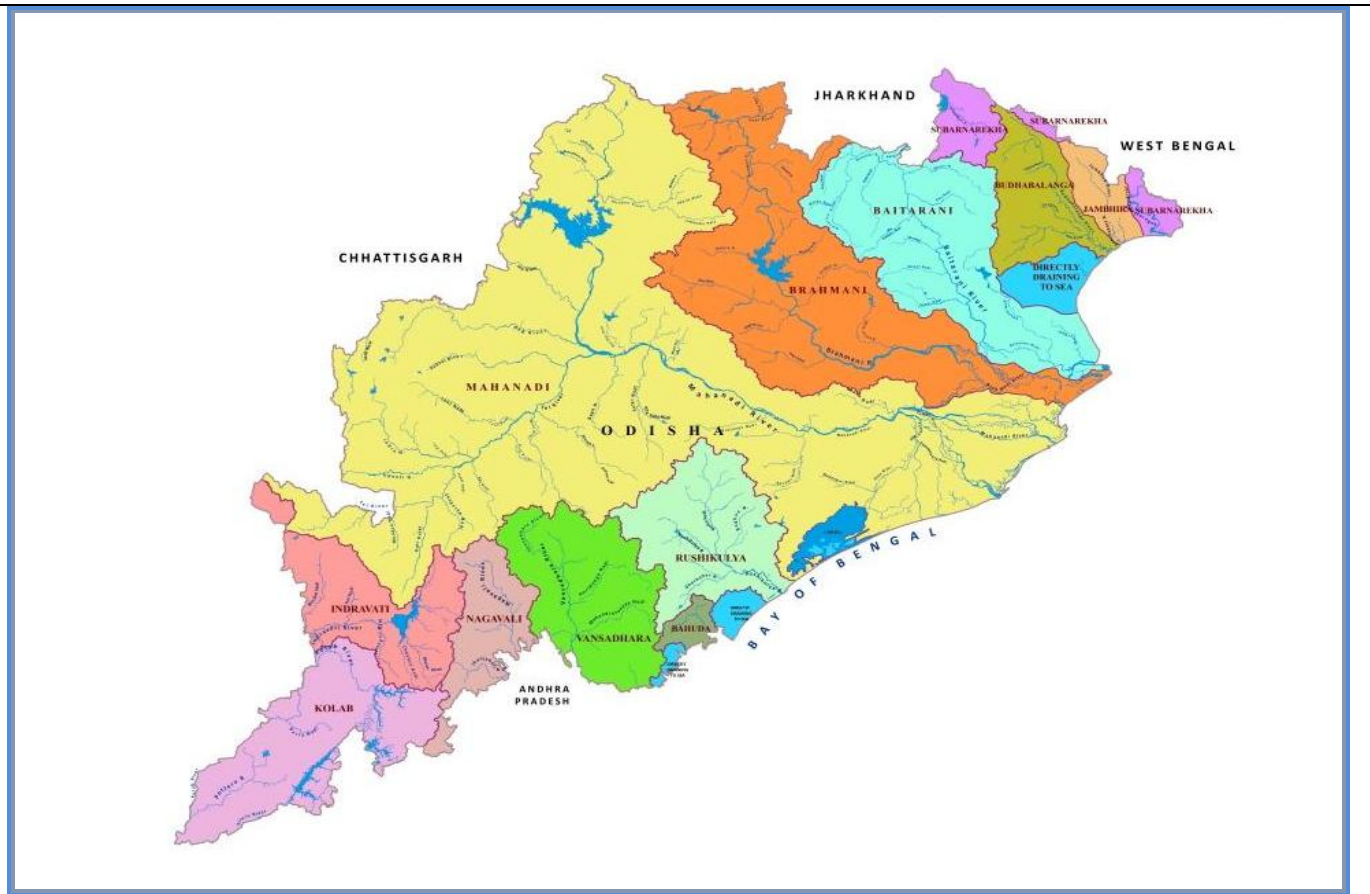
Government of Odisha

Department of Water Resources

Volume No.04

Date: 04.06.2026

Time: 14:00Hr



Contents

- Status of River Gauge
- Status of Reservoirs
- IMD Weather Bulletin
- River Discharge
- Rainfall Situation
- IMD Forecast

Flood Cell

Office of the Engineer-in-Chief, Water Resources, Odisha

Secha Sadan, Bhubaneswar

Tel:0674-2395951,2395953 e-Mail:floodcelleicwr@gmail.com

url: dowr.odisha.gov.in & dowrodisha.gov.in

Status of Gauge (in m)

04.06.2026

Name of River	Gauge Site	Danger Level (DL)	Warning Level	Time (Hrs)	Present Level	Trend	(wrt DL)	Highest Recorded Level	
								Level	Date
Mahanadi	Khairmal	109.00	108.00	12:00	99.88	S	-9.12	108.31	19.09.08
	Tikarpara	-	-	12:00	54.00	S	-	74.98	30.08.82
	Naraj (IB)	26.41	25.41	12:00	21.13	S	-5.28	27.6	31.08.82
Kusabhadra	Nimapara	10.76	9.85	12:00	2.56	S	-8.20	11.6	31.08.82
Devi	Alipingala	11.76	10.85	12:00	1.58	S	-10.18	13.11	11.09.11
Brahmani	Panposh	178.42	177.51	12:00	171.14	S	-7.28	181.44	24.09.11
	Rengali	88.00	-	12:00	76.60	S	-11.40	92.25	18.08.75
	Talcher	62.91	-	12:00	53.98	S	-8.93	65.53	19.08.75
	Jenapur	23.00	22.00	12:00	17.63	S	-5.37	24.78	20.08.75
	Indupur	8.23	-	12:00	1.80	S	-6.43	-	-
Baitarani	Champua	376.41	375.33	12:00	371.04	S	-5.37	379.06	23.09.11
	Swampatna	311.10	-	12:00	305.83	F	-5.27	315.66	14.08.75
	Anandapur	38.36	37.44	12:00	32.59	S	-5.77	41.35	23.09.11
	Akhuapada	18.33	17.83	12:00	14.92	F	-3.41	21.95	16.08.60
Budhabalanga	Chandanpur	-	-	12:00	81.14	S	-	85.8	09.11.95
	Baripada	30.92	29.70	12:00	21.14	S	-9.78	34.82	13.10.13
	Balimundali	-	-	12:00	36.00	S	-	43.02	13.10.13
	NH5-Govindapur	8.13	7.21	12:00	0.92	R	-7.21	9.67	12.10.73
Subarnarekha	Jamshedpur	123.50	122.50	12:00	115.00	S	-8.50	129.82	12.10.73
	Jamsolaghat	49.16	48.32	12:00	43.00	S	-6.16	56.76	03.09.78
	Rajghat	10.36	9.45	12:00	3.68	S	-6.68	12.69	19.06.08
Jalaka	Mathani Road Bridge	6.50	6.00	12:00	2.28	S	-4.22	7.31	22.09.21
Rushikulya	Sorada	81.99	80.99	12:00	76.44	S	-5.55	83.21	04.11.90
	Madhabarida	60.65	-	12:00	55.92	F	-4.73	61.44	18.10.99
	Purusottampur	16.84	15.84	12:00	11.35	S	-5.49	19.66	04.11.90
Vansadhara	Gudari	-	-	12:00	113.73	S	-	121.82	17.09.80
	Gunupur	84.00	83.00	12:00	79.51	S	-4.49	88.75	17.09.80
	Kashinagar	54.60	54.10	12:00	51.67	S	-2.93	58.93	18.09.80

Source: All Gauge stations (CWC), Jalaka (DoWR)

Status of Major Reservoirs

04.06.2026

Name of the Reservoir	Name of the District	Dead Storage Level	FRL/MWL	Reservoir Level	LS Available/ Live Storage Capacity (%)	Last Year (2025) R.L./ Live Storage Avl (%)	Inflow	Total Outflow	Gates Open (Nos)/ Trend
1.Hirakud 08:00Hr	Sambalpur	590.0 ft	630.0ft	603.29 ft	<u>992.0 Mcum</u> 4822.83Mcum (20.6%)	<u>604.6 ft</u> 23.0%	481.0 Cusec	1,939.0 Cusec	00/98 Falling
2.Rengali 06:00Hr	Angul	109.72 m	<u>123.5 m</u> 125.4 m	111.08 m	<u>19811.0 Ham</u> 341371.0 Ham (5.8%)	<u>110.64 m</u> 3.9%	20.06 Cumec	186.74 Cumec	0/27 Falling
3.U.Indravati 08:00Hr	Nabarangpur	625.0 m	<u>642 m</u> 643 m	630.23 m	<u>35177.0 Ham</u> 148550.0 Ham (23.7%)	<u>627.90 m</u> 12.4%	13.57 Cumec	83.08 Cumec	0/12 Falling
4.UpperKolab 08:00Hr	Koraput	844.0 m	858.0 m	847.60 m	<u>159.49 Mcum</u> 935.0 Mcum (17.1%)	<u>847.46 m</u> 16.3%	7.45 Cumec	54.48 Cumec	0/11 Falling
5.Balimela 08:00Hr	Malkangiri	1440.0 ft	<u>1516 ft</u> 1518 ft	1471.30 ft	<u>78381.0 Ham</u> 267600.0 Ham (29.3%)	<u>1459.7 ft</u> 17.0%	450.30 Cusec	6,813.88 Cusec	0/12 Falling
6.Machhkund (Jalaput) 08:00 Hr	Koraput	2685.0 ft	2750.0 ft	2707.7 ft	<u>15777.9 Ham</u> 89254.7 Ham (17.7%)	<u>2728.90 ft</u> 48.8%	294.34 Cusec	0.0 Cusec	0/12 Rising
7.Salandi 06:00Hr	Keonjhar	50.24 m	<u>82.3 m</u> 83.21m	75.00m	<u>33534.0Ham</u> 55650.0 Ham (60.3%)	<u>75.3 m</u> 61.9%	5.66 Cumec	5.66 Cumec	1/11 Constant
8.LowerIndra 08:00Hr	Nuapada	251.0 m	<u>265 m</u> 265 m	258.95 m	<u>11453.0 Ham</u> 33227.0 Ham (34.5%)	<u>259.84 m</u> 41.6%	0.0 Cumec	2.16 Cumec	0/09 Falling
9.LowerSuktel 08:00Hr	Bolangir	197.0 m	<u>206 m</u> 206 m	185.40 m	<u>0.0 Ham</u> 26343.0 Ham (0.0%)	<u>182.0m</u> 0.0%	0.0 Cumec	0.0 Cumec	0/12 Constant
10.Kanupur 08:00Hr	Keonjhar	425.0 m	<u>440 m</u> 440 m	422.98 m	<u>0.0 Ham</u> 26897.0 Ham (0.0%)	<u>419.80 m</u> 0.0%	6.96 Cumec	6.60 Cumec	0/14 Rising

Note: Total Outflow consists of Irrigation, Spillway, Sluice, Power generation, Industrial & other supply and Evaporation loss *U Indravati-7 gates, Muran Dam-5 gates (Total-12 Nos)

Average Inflow into & Outflow from Reservoir

Reservoir	Inflow	Outflow	Observation Period
Hirakud	481.0Cusec	1,939.0 Cusec	During last 24 Hrs ending 08:00Hrs of 04.06.2026
Rengali	20.06 Cumec	186.74 Cumec	During last 24 Hrs ending 06:00Hrs of 04.06.2026

Travel Time of Flow in Mahanadi River

Hirakud Dam	115 km	Khairmal	106 km	Barmul	95 km	Mundali
	12-18 Hrs		12-16 Hrs		12-16 Hrs	

River Discharge

04.06.2026

Name of the River	G&D Site	Time (Hrs)	Discharge (cusec)
Mahanadi (Up Stream Hirakud)	Champa	08:00	BG
	Tarapur	08:00	BG
	Saradihi	08:00	BG
	Deogaon	08:00	BG
Mahanadi (Down Stream Hirakud)	Khairmal	08:00	9,100
	Barmul	08:00	9,000
	Mundali	08:00	BG
Tel	Patharla	08:00	8,992
Brahmani	Pankapal	13:00	5,996
Subarnarekha	Rajghat	13:00	1,150
Budhabalanga	NH5 Govindapur	13:00	534
Rushikulya	Purusottampur	13:00	151

NOTE- NR= NOT RECEIVED
BG= BELOW GAUGE

Status of Medium Reservoir

04.06.2026

Sl.	Name of Dam / Reservoir	Available Live Storage (%) (Gates Open)	Sl.	Name of Dam / Reservoir	Available Live Storage (%) (Gates Open)	Sl.	Name of Dam / Reservoir	Available Live Storage (%) (Gates Open)
1.	Badanalla	34.7%	17.	Haladia	38.3%	33.	Remal	42.9%
2.	Baghalati	75.6%	18.	Harabhangi	51.8%	34.	Ret	30.5%
3.	Baghua	59.7%	19.	Harihorjore	7.9%	35.	Rukura	30.9%
4.	Bankabahal	63.9%	20.	Jambira*	10.4%	36.	Saipala	0.0%
5.	Bhanjanagar	83.5%	21.	Jharbandh*	0.0%	37.	Salia*	64.6%
6.	Bhaskel*	23.3%	22.	Kalo	38.3%	38.	Sapua*	82.3%
7.	Budhabudhiani	81.4%	23.	Kanjhari	61.2%	39.	Saraphgarh	19.7%
8.	Dadarghati*	56.0%	24.	Kansabahal	36.0%	40.	Satiguda*	32.4%
9.	Daha	53.5%	25.	Khadkhai	50.0%	41.	Soroda*	79.6%
10.	Deo	20.3%	26.	Kuanria	77.4%	42.	Sunder	3.0%
11.	Derjang	53.8%	27.	Mandira (02/13)	73.7%	43.	Sunei	52.5%
12.	Dhanei	75.7%	28.	Manjore	27.3%	44.	Talsara	51.3%
13.	Dumberbahal	0.0%	29.	Nesa*	37.9%	45.	Telengiri	9.9%
14.	Ghatakeswar	19.1%	30.	Pilasalki*	7.9%	46.	Titlagarh	48.6%
15.	Ghodahada	96.0%	31.	Pitamahal*	50.5%	47.	Upper Jonk	0.0%
16.	Gohira	48.4%	32.	Ramial	34.8%	48.	Upper Suktel*	0.0%

Note: *Un-gated Dams (12 Nos.)

Medium Reservoir: 48 Nos.

(Gated-36, Un-Gated-12),

Below 50%: 27 Nos., Between 50% to 75%:13 Nos., Above 75%: 08 Nos.

AVAILABLE LIVE STORAGE CAPACITY OF MAJOR & MEDIUM RESERVOIRS (04.06.2026)

No. of Gates Open/Total Gates:

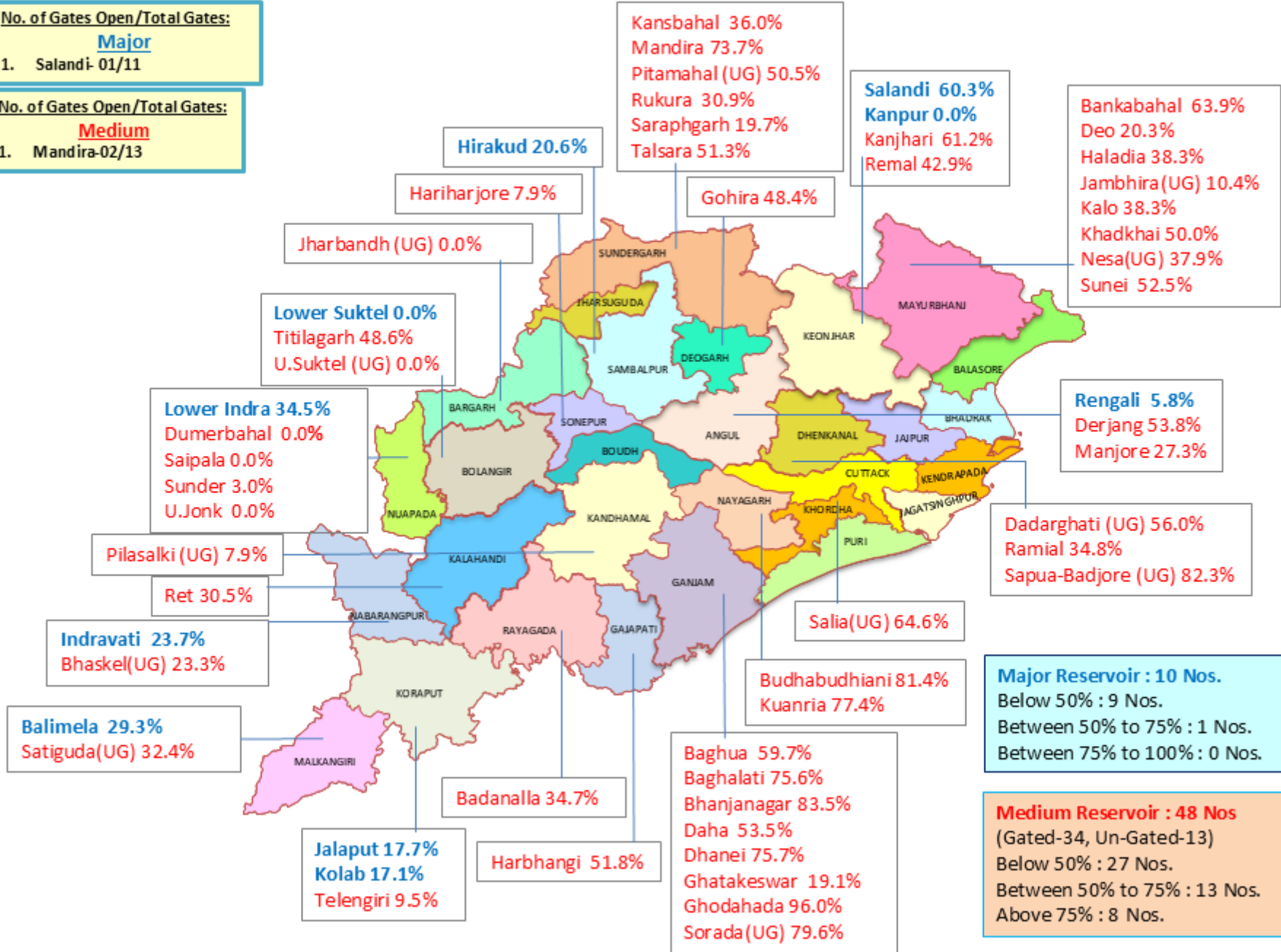
Major

1. Salandi- 01/11

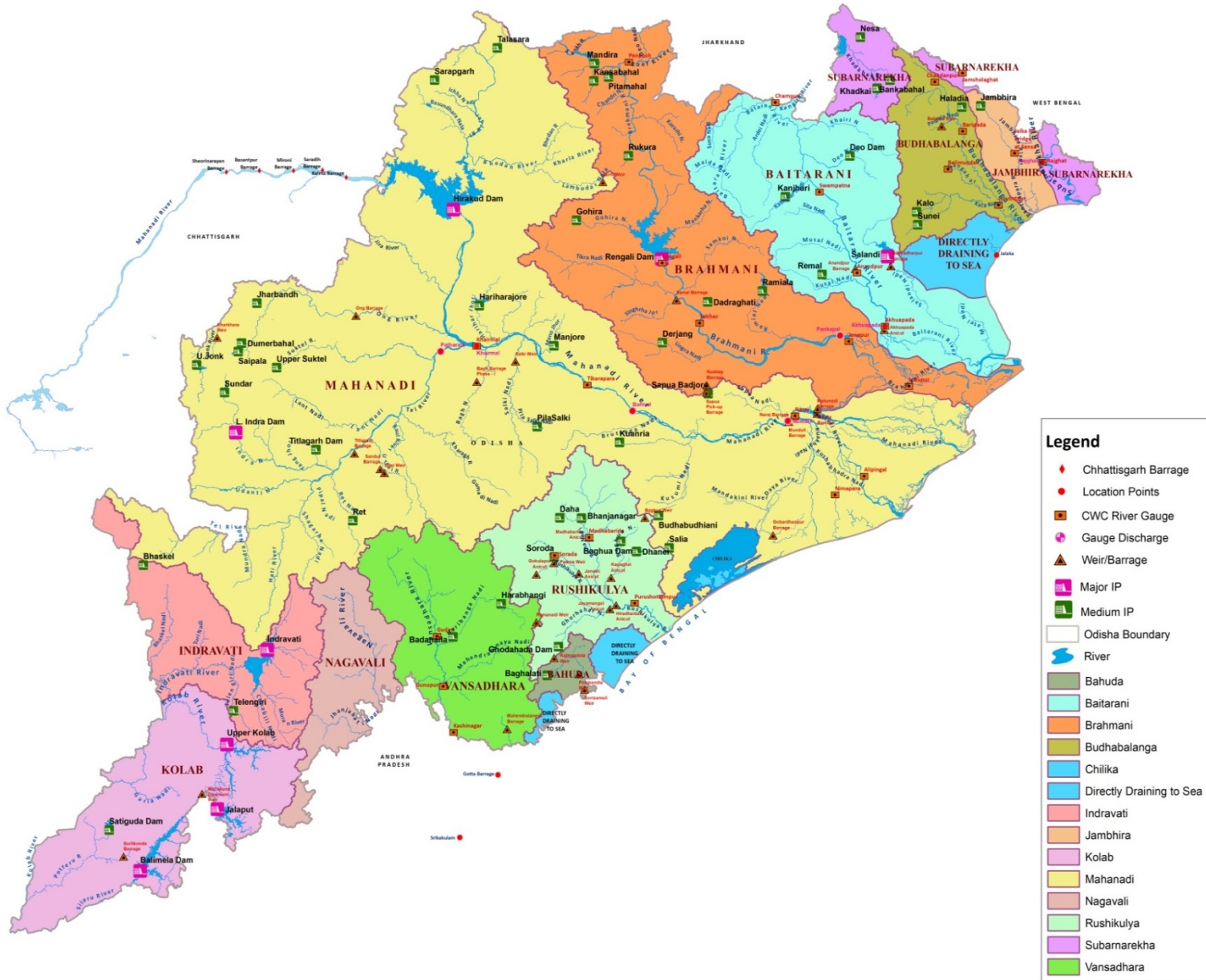
No. of Gates Open/Total Gates:

Medium

1. Mandira-02/13



MAJOR & MEDIUM RESERVOIRS , G & D SITES IN ODISHA



Legend

- ◆ Chhattisgarh Barrage
- Location Points
- CWC River Gauge
- ◆ Gauge Discharge
- ▲ Weir/Barrage
- Major IP
- Medium IP
- ▭ Odisha Boundary
- ▬ River
- Bahuda
- Baitarani
- Brahmani
- Budhabalanga
- Chilika
- Directly Draining to Sea
- Indravati
- Jambhira
- Kolab
- Mahanadi
- Nagavali
- Rushikulya
- Subarnarekha
- Vansadhara

भारत सरकार
 भारत मौसम विज्ञान विभाग
 (पृथ्वी विज्ञान मंत्रालय)
 पता : मौसम विज्ञान केन्द्र, भुवनेश्वर
 फोन न. २५९६०१० & २५९६११६
 फैक्स न. २५९६०१० & २५९६०९३



GOVERNMENT OF INDIA
 INDIA METEOROLOGICAL DEPARTMENT
 (Ministry of Earth Sciences)
METEOROLOGICAL CENTRE
BIJUPATNAIK AIRPORT
BHUBANESWAR-751020
 TELE: 2596010 & 2596116
 FAX : 2596010 & 2596093
 E-MAIL : imdbbsr@ori.nic.in

Ref No: FM/HM Bulletin/01

Dated: 04/06/2026
 Time of Issue: 1300 hrs IST

HYDROMET BULLETIN

1) Synoptic Situation

- ❖ The Southwest Monsoon has further advanced into remaining parts of Southwest & Southeast Arabian Sea, some parts of westcentral & eastcentral Arabian Sea, entire Lakshadweep islands, Kerala & Mahe, some parts of Karnataka, Tamil Nadu, remaining parts of Comorin area, southeast Bay of Bengal and some more parts of southwest, westcentral, eastcentral and northeast Bay of Bengal today the 4th June, 2026.
- ❖ The Northern Limit of Monsoon passes through 14°N/60°E, 13.5°N/65°E, 13°N/70°E, Mangalore, Uthagamandalam, Kodaikanal, Thoothukudi, 8.8°N/79°E, 11°N/83°E, 14.5°N/87°E, 17.5°N/90°E, 20°N/93°E and 22°N/95°E as on 4th June 2026.
- ❖ Conditions are favourable for further advance of southwest monsoon into some more parts of central Arabian Sea, entire Goa, some parts of Maharashtra and Andhra Pradesh, some more parts of Karnataka, remaining parts of Tamil Nadu, Southwest Bay of Bengal, some more parts of Westcentral, Eastcentral and Northeast Bay of Bengal, some parts of Northeastern state during next 2-3 days.

a) River Sub-basin-wise Quantitative Precipitation Forecast (QPF)

S. No.	Basin Name	Sub-basin Name	QPF (mm)						
			Day-1 (04.06.26)	Day-2 (05.06.26)	Day-3 (06.06.26)	Day-4 (07.06.26)	Day-5 (08.06.26)	Day-6 (09.06.26)	Day-7 (10.06.26)
1	BAITRANI	BT	0.1-10	0.1-10	0.1-10	0.1-10	0.1-10	0.1-10	0.1-10
2	BHURABALANG	BB	0.1-10	0.1-10	0.1-10	0.1-10	0.1-10	0.1-10	0.1-10
3	LOWER BRAHMANI	LB	0.1-10	0.1-10	0.1-10	0.1-10	0.1-10	0.1-10	0.1-10
4	LOWER MAHANADI	LM	0.1-10	0.1-10	0.1-10	0.1-10	0.1-10	0.1-10	0.1-10
5	NAGAVALI	NV	0.1-10	0.1-10	0.1-10	0.1-10	0.1-10	0.1-10	0.1-10
6	RUSHIKULIYA	RK	0.1-10	0.1-10	0.1-10	0.1-10	0.1-10	0.1-10	0.1-10
7	SABARI	SB	0.1-10	0.1-10	0.1-10	0.1-10	0.1-10	0.1-10	0.1-10
8	SUBERNAREKHA	SR	0.1-10	0.1-10	0.1-10	0.1-10	0.1-10	0.1-10	0.1-10
9	UPPER BRAHMANI	UB	0.1-10	0.1-10	0.1-10	0.1-10	0.1-10	0.1-10	0.1-10
10	VAMSDHARA	VD	0.1-10	0.1-10	0.1-10	0.1-10	0.1-10	0.1-10	0.1-10
11	UPPER MAHANADI	UM	0.1-10	0.1-10	0.1-10	0.1-10	0.1-10	0.1-10	0.1-10

PF categories (mm)	0	0.1-10	11-25	26-37	38-50	51-75	76-100	>100
--------------------	---	--------	-------	-------	-------	-------	--------	------

Forecast and Warning for any day is valid from 0830 hours IST of day till 0830 hours IST of next day

2b) River Sub-basin-wise Intensity and Distribution of QPF

S. No	Basin Name	Sub-basin Name	Intensity (I) and Spatial Distribution (D)													
			Day-1 (04.06.26)		Day-2 (05.06.26)		Day-3 (06.06.26)		Day-4 (07.06.26)		Day-5 (08.06.26)		Day-6 (09.06.26)		Day-7 (10.06.26)	
			I	D	I	D	I	D	I	D	I	D	I	D	I	D
1	BAITRANI	BT	L	ISOL	L	ISOL	L	ISOL	L	ISOL	L	ISOL	L	ISOL	L	ISOL
2	BHURABALANG	BB	L	ISOL	L	ISOL	L	ISOL	L	ISOL	L	ISOL	L	ISOL	L	ISOL
3	LOWER BRAHMANI	LB	L	ISOL	L	ISOL	L	ISOL	L	ISOL	L	ISOL	L	ISOL	L	ISOL
4	LOWER MAHANADI	LM	L	ISOL	L	ISOL	L	ISOL	L	ISOL	L	ISOL	L	ISOL	L	ISOL
5	NAGAVALI	NV	L	ISOL	L	ISOL	L	ISOL	L	ISOL	L	ISOL	L	ISOL	L	ISOL
6	RUSHIKULIYA	RK	L	ISOL	L	ISOL	L	ISOL	L	ISOL	L	ISOL	L	ISOL	L	ISOL
7	SABARI	SB	L	ISOL	L	ISOL	L	ISOL	L	ISOL	L	ISOL	L	ISOL	L	ISOL
8	SUBERNAREKHA	SR	L	ISOL	L	ISOL	L	ISOL	L	ISOL	L	ISOL	L	ISOL	L	ISOL
9	UPPER BRAHMANI	UB	L	ISOL	L	ISOL	L	ISOL	L	ISOL	L	ISOL	L	ISOL	L	ISOL
10	VAMSDHARA	VD	L	ISOL	L	ISOL	L	ISOL	L	ISOL	L	ISOL	L	ISOL	L	ISOL
11	UPPER MAHANADI	UM	L	ISOL	L	ISOL	L	ISOL	L	ISOL	L	ISOL	L	ISOL	L	ISOL

Spatial Distribution

DRY	Dry	No station reported rainfall
ISOL	One or two places	25% or less number of stations recorded rainfall 2.5 mm
SCT	At a few places	26%-50% number of stations recorded rainfall 2.5 mm
FWS	At many places	51%-75% number of stations recorded rainfall 2.5 mm
WS	At most places	76%-100% number of stations recorded rainfall 2.5 mm

Intensity

M.Dry	NIL	0 cm	VL	Very Light Rainfall	Trace
L	Light Rainfall	Upto 1 cm	M	Moderate Rainfall	2-6 cm
H	Heavy Rainfall	7-11 cm	VH	Very Heavy rainfall	12-20 cm
EH	Extremely Heavy Rainfall	21 cm or more			
ExH	Exceptionally Heavy Rainfall	When the amount is a value near about the highest recorded rainfall at or near the station for the month or season. However, this term will be used only when the actual rainfall amount exceeds 12 cm.			

3) River Sub-basin-wise Heavy Rainfall Warning

S. No	Basin Name	Sub-basin Name	Day-1 (04.06.26)		Day-2 (05.06.26)		Day-3 (06.06.26)		Day-4 (07.06.26)		Day-5 (08.06.26)		Day-6 (09.06.26)		Day-7 (10.06.26)	
			I	D	I	D	I	D	I	D	I	D	I	D	I	D
1	BAITRANI	BT	NIL	NIL	NIL	NIL	NIL	NIL	NIL	NIL	NIL	NIL	NIL	NIL	NIL	NIL
2	BHURABALANG	BB	NIL	NIL	NIL	NIL	NIL	NIL	NIL	NIL	NIL	NIL	NIL	NIL	NIL	NIL
3	LOWER BRAHMANI	LB	NIL	NIL	NIL	NIL	NIL	NIL	NIL	NIL	NIL	NIL	NIL	NIL	NIL	NIL
4	LOWER MAHANADI	LM	NIL	NIL	NIL	NIL	NIL	NIL	NIL	NIL	NIL	NIL	NIL	NIL	NIL	NIL
5	NAGAVALI	NV	NIL	NIL	NIL	NIL	NIL	NIL	NIL	NIL	NIL	NIL	NIL	NIL	NIL	NIL
6	RUSHIKULIYA	RK	NIL	NIL	NIL	NIL	NIL	NIL	NIL	NIL	NIL	NIL	NIL	NIL	NIL	NIL
7	SABARI	SB	NIL	NIL	NIL	NIL	NIL	NIL	NIL	NIL	NIL	NIL	NIL	NIL	NIL	NIL
8	SUBERNAREKHA	SR	NIL	NIL	NIL	NIL	NIL	NIL	NIL	NIL	NIL	NIL	NIL	NIL	NIL	NIL
9	UPPER BRAHMANI	UB	NIL	NIL	NIL	NIL	NIL	NIL	NIL	NIL	NIL	NIL	NIL	NIL	NIL	NIL
10	VAMSDHARA	VD	NIL	NIL	NIL	NIL	NIL	NIL	NIL	NIL	NIL	NIL	NIL	NIL	NIL	NIL
11	UPPER MAHANADI	UM	NIL	NIL	NIL	NIL	NIL	NIL	NIL	NIL	NIL	NIL	NIL	NIL	NIL	NIL

Spatial Distribution

DRY	Dry	No station reported rainfall
ISOL	One or two places	25% or less number of stations recorded rainfall 2.5 mm
SCT	At a few places	26%-50% number of stations recorded rainfall 2.5 mm
FWS	At many places	51%-75% number of stations recorded rainfall 2.5 mm
WS	At most places	76%-100% number of stations recorded rainfall 2.5 mm

Intensity

M.Dry	NIL	0 cm	VL	Very Light Rainfall	Trace
L	Light Rainfall	Upto 1 cm	M	Moderate Rainfall	2-6 cm
H	Heavy Rainfall	7-11 cm	VH	Very Heavy rainfall	12-20 cm
EH	Extremely Heavy Rainfall	21 cm or more			
ExH	Exceptionally Heavy Rainfall	When the amount is a value near about the highest recorded rainfall at or near the station for the month or season. However, this term will be used only when the actual rainfall amount exceeds 12 cm.			

Days/दिनों	Forecast/पूर्वानुमान	Warning/चेतावनी
<p>Day 1</p> <p>(Valid upto 0830 hrs IST of 05.06.2026)</p>	<p>Light to Moderate rain or thunderstorm very likely to occur at a few places over the districts of Balasore, Bhadrak, Jajpur, Kendrapara, Jagatsinghapur, Cuttack, Gajapati, Ganjam, Puri, Khurda, Nayagarh and at one or two places over the rest districts of Odisha.</p>	<p>ORANGE ALERT(BE PREPARED TO TAKE ACTION)</p> <p>Thunderstorm accompanied with lightning and gusty surface wind (wind speed reaching upto 50-60 kmph) very likely to occur in the afternoon/evening hours at one or two places over the districts of Balasore, Keonjhar, Mayurbhanj, Gajapati, Ganjam, Nayagarh.</p> <p>YELLOW WARNING:- (BE AWARE)</p> <p>1)Thunderstorm accompanied with lightning and gusty surface wind (wind speed reaching upto 40-50 kmph) very likely to occur in the afternoon/evening hours at one or two places over the districts of Bhadrak, Jajpur, Kendrapara, Jagatsinghapur, Cuttack, Sundargarh, Jharsuguda, Bargarh, Sambalpur, Deogarh, Angul, Dhenkanal, Sonapur, Boudh, Nuapada, Bolangir, Kalahandi, Kandhamal, Nawrangpur, Rayagada, Koraput, Malkangiri, Puri, Khurda.</p> <p>2)Hot and humid conditions very likely to prevail at isolated places over the districts of Balasore, Bhadrak, Jajpur, Kendrapara, Jagatsinghapur, Cuttack, Bargarh, Sambalpur, Angul, Dhenkanal, Sonapur, Boudh, Kandhamal, Gajapati, Ganjam, Puri, Khurda, Nayagarh.</p>
<p>Day 2</p> <p>(Valid from 0830 hrs IST of 05.06.2026 to 0830 hrs IST of 06.06.2026)</p>	<p>Light to Moderate rain or thunderstorm very likely to occur at a few places over the districts of Sonapur, Boudh, Nuapada, Bolangir, Kalahandi, Kandhamal, Nawrangpur, Rayagada, Koraput, Malkangiri, Gajapati, Ganjam, Puri, Khurda, Nayagarh and at one or two places over the rest districts of Odisha.</p>	<p>ORANGE ALERT(BE PREPARED TO TAKE ACTION)</p> <p>Thunderstorm accompanied with lightning and gusty surface wind (wind speed reaching upto 50-60 kmph) very likely to occur in the afternoon/evening hours at one or two places over the districts of Keonjhar, Mayurbhanj.</p> <p>YELLOW WARNING:- (BE AWARE)</p> <p>1)Thunderstorm accompanied with lightning and gusty surface wind (wind speed reaching upto 40-50 kmph) very likely to occur in the afternoon/evening hours at one or two places over the districts of Sundargarh, Jharsuguda, Sambalpur, Kalahandi, Kandhamal, Nawrangpur, Rayagada, Koraput, Malkangiri, Gajapati, Ganjam.</p> <p>2)Thunderstorm accompanied with lightning and gusty surface wind (wind speed reaching upto 30-40 kmph) very likely to occur in the afternoon/evening hours at one or two places over the districts of Balasore, Bhadrak, Jajpur, Kendrapara, Jagatsinghapur, Cuttack, Bargarh, Deogarh, Angul, Dhenkanal, Sonapur, Boudh, Nuapada, Bolangir, Puri, Khurda, Nayagarh.</p> <p>3)Hot and humid conditions very likely to prevail at isolated places over the districts of Balasore,</p>

		Bhadrak, Jajpur, Kendrapara, Jagatsinghapur, Cuttack, Bargarh, Sambalpur, Angul, Dhenkanal, Sonapur, Boudh, Kandhamal, Gajapati, Ganjam, Puri, Khurda, Nayagarh.
Day 3 (Valid from 0830 hrs IST of 06.06.2026 to 0830 hrs IST of 07.06.2026)	Light to Moderate rain or thunderstorm very likely to occur at a few places over the districts of Sonapur, Boudh, Nuapada, Bolangir, Kalahandi, Kandhamal, Nawrangpur, Rayagada, Koraput, Malkangiri, Gajapati, Ganjam, Puri, Khurda, Nayagarh and at one or two places over the rest districts of Odisha.	<p>YELLOW WARNING:- (BE AWARE)</p> <p>1)Thunderstorm accompanied with lightning and gusty surface wind (wind speed reaching upto 40-50 kmph) very likely to occur in the afternoon/evening hours at one or two places over the districts of Keonjhar, Mayurbhanj.</p> <p>2)Thunderstorm accompanied with lightning and gusty surface wind (wind speed reaching upto 30-40 kmph) very likely to occur in the afternoon/evening hours at one or two places over the districts of Balasore, Bhadrak, Jajpur, Kendrapara, Jagatsinghapur, Cuttack, Sundargarh, Jharsuguda, Bargarh, Sambalpur, Deogarh, Angul, Dhenkanal, Sonapur, Boudh, Nuapada, Bolangir, Kalahandi, Kandhamal, Nawrangpur, Rayagada, Koraput, Malkangiri, Gajapati, Ganjam, Puri, Khurda, Nayagarh.</p> <p>3)Hot and humid conditions very likely to prevail at isolated places over the districts of Balasore, Bhadrak, Jajpur, Kendrapara, Jagatsinghapur, Cuttack, Gajapati, Ganjam, Puri, Khurda, Nayagarh.</p>
Day 4 (Valid from 0830 hrs IST of 07.06.2026 to 0830 hrs IST of 08.06.2026)	Light to Moderate rain or thunderstorm very likely to occur at a few places over the districts of Sonapur, Boudh, Nuapada, Bolangir, Kalahandi, Kandhamal, Nawrangpur, Rayagada, Koraput, Malkangiri, Gajapati, Ganjam, Puri, Khurda, Nayagarh and at one or two places over the rest districts of Odisha.	<p>YELLOW WARNING:- (BE AWARE)</p> <p>1)Thunderstorm accompanied with lightning and gusty surface wind (wind speed reaching upto 40-50 kmph) very likely to occur in the afternoon/evening hours at one or two places over the districts of Keonjhar, Mayurbhanj.</p> <p>2)Thunderstorm accompanied with lightning and gusty surface wind (wind speed reaching upto 30-40 kmph) very likely to occur in the afternoon/evening hours at one or two places over the districts of Balasore, Bhadrak, Jajpur, Kendrapara, Jagatsinghapur, Cuttack, Sundargarh, Jharsuguda, Bargarh, Sambalpur, Deogarh, Angul, Dhenkanal, Sonapur, Boudh, Nuapada, Bolangir, Kalahandi, Kandhamal, Nawrangpur, Rayagada, Koraput, Malkangiri, Gajapati, Ganjam, Puri, Khurda, Nayagarh.</p> <p>3)Hot and humid conditions very likely to prevail at isolated places over the districts of Balasore, Bhadrak, Jajpur, Kendrapara, Jagatsinghapur, Cuttack, Gajapati, Ganjam, Puri, Khurda, Nayagarh.</p>
Day 5 (Valid from 0830 hrs IST of 08.06.2026 to 0830 hrs IST of 09.06.2026)	Light to Moderate rain or thunderstorm very likely to occur at a few places over the districts of Gajapati, Ganjam, Puri, Khurda, Nayagarh and at one or two places over the rest districts	<p>YELLOW WARNING:- (BE AWARE)</p> <p>1)Thunderstorm accompanied with lightning and gusty surface wind (wind speed reaching upto 40-50 kmph)</p>

09.06.2026)	of Odisha.	<p>very likely to occur in the afternoon/evening hours at one or two places over the districts of Rayagada, Koraput, Malkangiri, Gajapati, Ganjam.</p> <p>2)Thunderstorm accompanied with lightning and gusty surface wind (wind speed reaching upto 30-40 kmph) very likely to occur in the afternoon/evening hours at one or two places over the districts of Balasore, Bhadrak, Jajpur, Kendrapara, Jagatsinghapur, Cuttack, Sundargarh, Jharsuguda, Bargarh, Sambalpur, Deogarh, Angul, Dhenkanal, Keonjhar, Mayurbhanj, Sonapur, Boudh, Nuapada, Bolangir, Kalahandi, Kandhamal, Nawrangpur, Puri, Khurda, Nayagarh.</p> <p>3)Hot and humid conditions very likely to prevail at isolated places over the districts of Balasore, Bhadrak, Jajpur, Kendrapara, Jagatsinghapur, Cuttack, Gajapati, Ganjam, Puri, Khurda, Nayagarh.</p>
Day 6 (Valid from 0830 hrs IST of 09.06.2026 to 0830 hrs IST of 10.06.2026)	Light to Moderate rain or thunderstorm very likely to occur at one or two places over all the districts of Odisha.	NIL
Day 7 (Valid from 0830 hrs IST of 10.06.2026 to 0830 hrs IST of 11.06.2026)	Light to Moderate rain or thunderstorm very likely to occur at one or two places over all the districts of Odisha.	NIL
Outlook for subsequent 3days (valid from 0830hrs IST of 11.06.2026 to 0830hrs IST of 14.06.2026)	NO LARGE CHANGE	

5) Station-wise significant rainfall recorded at 0830 hrs IST of today

S. No	NAME OF SUB-BASIN	NAME OF STATION AND RAINFALL (≥ 5 CM.)
1	LOWER BRAHMANI	GONDIA(7.05 cm)
2	RUSHIKULYA	BUGUDA(7.3 cm)

6) River Sub-basin-wise observed Average Areal Precipitation (AAP) of today

S. No.	Basin Name	Sub-basin Name	AAP (mm)
1	BAITRANI	BT	2.5
2	BHURABALANG	BB	1.3
3	LOWER BRAHMANI	LB	3.6
4	LOWER MAHANADI	LM	1.8
5	NAGAVALI	NV	1.6
6	RUSHIKULIYA	RK	5.2
7	SABARI	SB	0.5
8	SUBERNAREKHA	SR	1.0
9	UPPER BRAHMANI	UB	1.1
10	VAMSDHARA	VD	1.3

(DUTY OFFICER)
for Scientist-F & Head
FLOOD MET.OFFICE
M.C Bhubaneswar

RAINFALL FOR PAST 24 HRS ENDING AT 0830 HRS OF DATE								04.06.2026
Sl No	Name of Stations	Rainfall (in mm)	Sl No	Name of Stations	Rainfall (in mm)	Sl No	Name of Stations	Rainfall (in mm)
LOWER MAHANADI			LOWER MAHANADI			LOWER MAHANADI		
1	DEOBHOG	0.0	63	KESINGA ARG	0.0	125	SAMBALPUR	0.0
2	AMLIPADAR	0.0	64	JUNAGARH	0.0	126	BINIKA	0.0
3	BASANA	0.0	65	KOKSARA	10.0	127	BIRMAHARAJPUR ARG	0.0
4	ATHMALIK	0.0	66	KARLAMUNDA	0.0	128	SONEPUR	0.0
5	RAKISHORENAGAR	0.0	67	MADANPUR RAMPUR	0.0	129	DUNGURIPALLI	0.0
6	PURANKOT ARG	0.0	68	NARLA ARG	0.0	130	TARVA ARG	0.0
7	TIKARPARA	0.0	69	BHAWANIPATNA	0.0	131	ULLUNDA ARG	0.0
8	BOLANGIR	0.0	70	TH RAMPUR	4.0			
9	DEOGAON	0.0	71	BALIGUDA	0.0	BAITARANI		
10	BANGAMUNDA	0.0	72	G UDAYAGIRI	0.0	1	BONTH	0.0
11	BELPADA ARG	0.0	73	CHAKAPAD	0.0	2	BHADRAK AWS	10.0
12	SAINTALA ARG	0.0	74	KHAJURIPADA	0.0	3	RANITAL AWS	13.0
13	KHAPRAKHOL ARG	0.0	75	PHULBANI	0.0	4	BHANDARIPOKHARI	0.0
14	AGALPUR ARG	0.0	76	PHIRINGIA ARG	0.0	5	CHANDBALI	Trace
15	LOISINGHA ARG	0.0	77	RAIKIA ARG	0.0	6	AKHUAPADA	16.8
16	SALEBHATTA ARG	0.0	78	K NUAGAON ARG	0.0	7	DHAMNAGAR ARG	0.0
17	SALEBHATTA ARG	0.0	79	KALINGA	0.0	8	TIHIDI ARG	22.0
18	PATNAGARH	0.0	80	TIKABALI	0.0	9	KOREI ARG	0.0
19	BELGAON	0.0	81	DERABIS ARG	4.5	10	ANANDPUR	0.0
20	TITLAGARH	0.0	82	KENDRAPADA PTO	2.5	11	GHASIPURA	0.0
21	TUREKELA	0.0	83	KENDRAPARA	2.0	12	CHAMPUA	0.0
22	GUDVELA	0.0	84	MOHAKALAPADA	0.0	13	DAITARI	0.0
23	ATABIRA ARG	0.0	85	MARSAGHAI ARG	0.0	14	GHATAGAON	0.0
24	BARPALLI ARG	0.0	86	GARADAPUR ARG	0.0	15	HARICHANDANPUR ARG	0.0
25	BARGARH	0.0	87	BALIPATNA ARG	0.0	16	JHUMPURA	0.0
26	BATLI ARG	0.0	88	BANPUR	45.0	17	KEONJHARGARH	0.0
27	BIJEPUR	0.0	89	BEGUNIA	20.0	18	SWAM-PATNA	0.4
28	PADAMPUR	0.0	90	BHUBANESWAR AERO	2.3	19	HATADIHI	1.2
29	GAISILET ARG	0.0	91	BOLAGARH ARG	0.0	20	BANSPAL	0.0
30	JHARBANDH ARG	0.0	92	JATNI	4.0	21	SHARPADA	3.4
31	PAIKMAL	0.0	93	KHORDHA PTO	15.0	22	JOSHIPUR	0.0
32	SOHELA	0.0	94	CHILIKA	13.0	23	KARANJIA	0.0
33	BOUDHGARH	0.0	95	TANGI	14.0	24	RARUANA	9.0
34	HARABHANGA	0.0	96	BODEN ARG	0.5	25	SUKRULI	7.6
35	KANTAMAL	0.0	97	KHARIAR	0.0	26	THAKURMUNDA	0.0
36	KHAIRAMAL	0.0	98	KOMNA	0.0	27	TONTO	0.0
37	ATHGARH	12.0	99	SINAPALI ARG	0.0	28	HATGAMHARIA	0.0
38	BANKI ARG	0.0	100	CHANDAHANDI ARG	0.0	29	KUMARDUNGI	0.0
39	NARAJ	0.0	101	JHORIGAM ARG	1.0	30	MAJGAON	0.0
40	CUTTACK	0.0	102	DASPALLA	0.0			
41	MUNDALI	0.0	103	BHAPUR	0.0	NAGAVALLI		
42	MAHANGA ARG	11.0	104	GANIA ARG	9.0	1	BANDHUGAON	0.0
43	NARSINGHPUR	0.0	105	BARMUL	0.0	2	MUNIGUDA ARG	0.0
44	NIALI ARG	0.0	106	NAYAGARH	0.0	3	KOLNARA	0.0
45	NISCHINTAKOILI ARG	6.0	107	NUAGAON	0.0	4	RAYAGADA	0.0
46	KANTAPADA ARG	0.0	108	KHANDAPARA	0.0	5	RAYAGADA PTO	0.0
47	SALEPUR ARG	0.0	109	ODAGAON ARG	0.0	6	BALAJIPETA	0.0
48	TIGIRIA ARG	8.0	110	RANPUR	39.2	7	GARUGUBILLI	0.0
49	RAMBHA AWS	0.0	111	ASTARANGA ARG	0.0	8	JIYAMMA VALASA	0.0
50	BALIKUDA ARG	0.0	112	BRAHMAGIRI	0.0	9	KOMARADA	0.0
51	BIRIDI	0.0	113	GOP	0.0	10	KOMARADA(ARG)	0.0
52	ALIPINGAL	0.0	114	KAKATPUR	0.0	11	KURUPAM	0.0
53	JAGATSINGHPUR	0.0	115	KRISHNAPRASAD	0.0	12	PALAKONDA	2.6
54	RAGHUNATHPUR ARG	0.0	116	NIMPARA	0.0	13	PALAKONDA(ARG)	0.0
55	KUJANGA ARG	0.0	117	PIPILI	8.0	14	PARVATHIPURAM	25.6
56	NAUGAON	0.0	118	PURI	Trace	15	SALUR	0.0
57	PARADEEP CWR	0.0	119	SATYABADI ARG	2.0	16	SEETHANAGARAM	1.0
58	TIRTOL ARG	0.0	120	CHIPLIMA AWS	0.0	17	VEERAGHATTAM	10.6
59	DHARMAGARH ARG	0.0	121	HIRAKUD	0.0	18	RAGOLU(A)	0.0
60	GOLAMUNDA	0.0	122	JUJUMURA ARG	0.0	19	BOBBILI	1.8
61	JAIPATNA	4.0	123	RAIRAKHOL	0.0	20	MERAKAMUDIDAM	1.4
62	KALAMPUR	7.0	124	DHANKAUDA	0.0	21	THERLAM	0.0

RAINFALL FOR PAST 24 HRS ENDING AT 0830 HRS OF DATE								04.06.2026
Sl No	Name of Stations	Rainfall (in mm)	Sl No	Name of Stations	Rainfall (in mm)	Sl No	Name of Stations	Rainfall (in mm)
UPPER BRAHMANI			LOWER BRAHMANI			SUBERNAREKHA		
1	JASHPURNAGAR	0.3	24	AUL	6.0	24	BAU KANKE	0.0
2	MANORA	2.1	25	PATTAMUNDAI	0.0	25	ICAR NAMKUM	0.0
3	PALLAHARA	17.4	26	RAJKANIKA	0.0	26	CIT TATISILWAI	0.0
4	DEOGARH	0.0	27	RAJNAGAR	1.0	27	HINDGIR	0.0
5	TELEIBANI ARG	0.0	28	TELKOI	6.4	28	RANCHI AERO	0.0
6	BARKOTE	0.0	29	BATAGAON	0.0	29	ORMANJHI	0.0
7	JODA ARG	0.0	30	NAKTIDEUL	0.0	30	KHARSEMA	0.0
8	BANAIGARH	0.0				31	NIMDIH	0.0
9	GURUNDIA ARG	0.0	BURHABALANGA			32	CHANDIL	0.0
10	KEIRI AWS	0.0	1	CHANDIPUR AWS	0.6	33	CHAIBASA	0.0
11	TENSA	0.0	2	BALASORE	0.0	34	CHAKRADHARPUR	0.0
12	KUTRA	0.0	3	JAIPUR	0.0	35	KHUNTPANI	0.0
13	LAHUNIPARA	0.0	4	REMUNA ARG	0.0	36	MANJHARI	0.0
14	LATHIKATA	0.0	5	NH5 GOBINDPUR	0.0	37	TANTNAGAR	0.0
15	PANPOSH	0.0	6	BANGIRIPOSI	0.0			
16	MANDIRA DAM	0.0	7	NAWANA	7.6	SABERI		
17	RAJGANGPUR	0.0	8	BARIPADA	0.0	1	DARBHA	0.0
18	RAURKELA (AIRPORT)	0.0	9	SAMAKHUNTA	0.0	2	LOHANDIGUDA	0.0
19	GHAGRA	0.0	10	BETANATI ARG	0.0	3	TONGPAAL	0.0
20	GUMLA	0.0	11	CHANDANPUR	0.6	4	DORNAPAL	0.0
21	PALKOT	0.0	12	KAPTIPADA ARG	1.0	5	KONTA	2.0
22	RAIDIH	0.0	13	BALIMUNDALI	1.0	6	CHHINDGARH	0.0
23	SISAI	9.2	14	G B NAGAR	0.0	7	GADIRAS	0.0
24	BHARNO	0.0	15	UDALA	0.0	8	SUKMA	0.0
25	MURHU	0.0				9	JEYPORE	0.0
26	RANIA	0.0	VANSADHARA			10	KORAPUT	0.0
27	DIYAKEL KHUNTI KVK AWS	0.5	1	GOSANI	0.0	11	POTTANGI	0.0
28	TORPA	8.0	2	KASHINAGAR	0.0	12	LAMATAPUT	0.0
29	LOHARDAGA KVK AWS	0.0	3	MOHANA	0.0	13	NANDAPUR	0.0
30	LOHARDAGA	0.0	4	PARALAKHEMUNDI	0.0	14	SIMILIGUDA	0.0
31	MANDAR	0.0	5	MAHENDRAGARH	0.0	15	CHITRAKUNDA K GUMA	0.0
32	BANO SIMDEGA KVK AWS	0.0	6	NUAGADA ARG	0.0	16	KORUKUNDA	0.0
33	KOLEBIRA	0.0	7	R.UDAIGIRI	0.0	17	MALKANGIRI	0.0
34	KURDEG	0.0	8	GUMMA	0.0	18	MATHILI	0.0
35	SIMDEGA	0.0	9	LANJIGARH	0.0	19	PADIA	0.0
36	ANANDPUR	0.0	10	KOTAGARH	0.0	20	ARAKU VALLEY	0.0
37	GOILKERA	0.0	11	AMBADOLA	0.0	21	ARAKU VALLEY(ARG)	0.0
38	BANDGAON	0.0	12	BISSEM-CUTTACK	0.0	22	CHINTAPALLE	2.4
39	JAGANATHPUR BAU KVK AWS	0.0	13	CHANDRAPUR	0.0	23	CHINTAPALLE(A)	0.0
40	JAGARNATHPUR	0.0	14	GUDARI	0.0	24	CHINTUR	0.0
41	GUDRI	0.0	15	GUNUPUR	0.0	25	KUNAVARAM	0.0
42	MANOHARPUR	0.0	16	R GUDA	0.0	26	PADERU	0.0
43	MANOHARPUR PHC	0.0	17	KOTRAGUDA	0.0			
44	SADAR CHAIBASA	8.0	18	PADMAPUR	3.2	RUSHIKULYA		
45	NOAMUNDI	0.0	19	KALINGPATNAM	0.0	1	ASKA	0.0
46	SONUA	0.0	20	PATHAPATNAM	0.0	2	JAGANNATH PRASAD ARG	9.6
						3	SORADA	0.0
LOWER BRAHMANI			SUBERNAREKHA			4	BELAGUNTHA ARG	6.0
1	ANGUL	2.0	1	BHOGRAI	0.0	5	BHANJNAGAR	14.0
2	BANARPAL ARG	4.4	2	JALESWAR	0.0	6	MADHABARIDA	13.6
3	CHENDIPADA	0.0	3	RAJGHAT	0.0	7	BERHAMPUR	0.0
4	TALCHER	0.0	4	KUSUMI	0.0	8	KUKUDAHANADI	0.0
5	KANIHA ARG	0.0	5	JAMDA	0.0	9	DHARAKOTE	0.0
6	RENGALI	0.0	6	JAMSOLAGHAT	0.0	10	DIGAPAHANDI ARG	0.0
7	REAMAL	0.0	7	SARASAKANA	0.0	11	CHHATRAPUR	1.8
8	BHUBAN ARG	3.0	8	BIJATALA	0.0	12	GANJAM	0.0
9	DHENKANAL	4.4	9	RAIRANGPUR	0.0	13	HINJILI	0.0
10	DHENKANAL PTO	6.0	10	BAHALDA	16.0	14	KODALA	5.0
11	GONDIA	70.5	11	TIRING	0.0	15	BUGUDA	73.0
12	HINDOL	0.0	12	JHALDA	0.0	16	SANKHEIMUNDI	0.0
13	ALTUMA CWC	6.6	13	JHALDA ARG	0.0	17	PURUSHOTTAMPUR	0.0
14	KAMAKHYANAGAR	5.4	14	BAHARAGORA	0.0	18	SHERAGADA	0.0
15	KANKADAHAD ARG	0.0	15	CHAKULIA	0.0	19	DARINGIBADI	0.0
16	BARI ARG	10.1	16	DHALBHUMGARH	0.0			
17	BINJHARPUR ARG	0.0	17	GHATSILA	4.8			
18	CHANDIKHOL ARG	0.0	18	ZRS DARISAI	0.5			
19	JAJPUR	10.0	19	JAMSHEDPUR	0.0			
20	DANAGADI ARG	0.0	20	JAMSHEDPUR AERO	0.0			
21	JAJPUR PTO	-	21	GURABANDHA	0.0			
22	JENAPUR	0.8	22	MUSABANI	6.2			
23	SUKINDA	0.0	23	ARKI	0.0			

BLOCKWISE RAINFALL FOR PAST 24 HRS ENDING AT 0830 HRS OF DATE

Date:04.06.26

SI No	Name of Stations	Rainfall (in mm)	SI No	Name of Stations	Rainfall (in mm)	SI No	Name of Stations	Rainfall (in mm)	SI No	Name of Stations	Rainfall (in mm)	SI No	Name of Stations	Rainfall (in mm)
1. ANGUL			8. DEOGARH			16. KANDHAMAL			21. MALKANGIRI			27. RAYAGADA		
1	Angul	2.0	1	Barkote	0.0	4	Madanpur Rampur	0.0	1	Malkangiri	0.0	1	Rayagada	0.0
2	Banarpal	4.4	2	Deogarh	0.0	5	Narla	0.0	2	Mathili	0.0	2	Kolnara	0.0
3	Chhendipada	0.0	3	Reamal	0.0	6	Lanjigarh	0.0	3	Khoirput	0.0	3	Kalyansingpur	0.0
4	Talcher	0.0	Avg 0.0			7	Thumal Rampur	4.0	4	Chitrakonda (K.Gumma)	0.0	4	Kashipur	0.0
5	Kaniha	0.0	9. DHENKANAL			8	Dharmagarh	0.0	5	Korukonda	0.0	5	Gunupur	0.0
6	Athamalik	0.0	1	Dhenkanal	4.4	9	Junagarh	0.0	6	Kalimela	0.0	6	Padmapur	3.2
7	Kishorenagar	0.0	2	Gondia	70.5	10	Kalampur	7.0	7	Podia	0.0	7	Gudari	0.0
8	Pallahara	17.4	3	Odapada	0.0	11	Jayapatna	4.0	Avg 0.0			8	Ramanaguda	0.0
Avg 3.0			4	Hindol	0.0	12	Kokasara	10.0	22. MAYURBHANJ			9	Bissam Cuttack	0.0
2. BALASORE			5	Kamakhyanagar	5.4	13	Golamunda	0.0	1	Samakhunta	0.0	10	Muniguda	0.0
1	Bhograi	0.0	6	Bhuban	3.0	Avg 1.9			2	Badasahi	0.0	11	Chandrapur	0.0
2	Basta	0.0	7	Parjang	0.0	16. KANDHAMAL			3	Betanati	0.0	Avg 0.3		
3	Jaleswar	0.0	8	Kankadahad	0.0	1	Baliguda	0.0	4	Morda	0.0	28. SAMBALPUR		
4	Baliapal	0.0	Avg 10.4			2	Chakapad	0.0	5	Rasgovindapur	0.0	1	Jujumura	0.0
5	Balasore	0.0	10. GAJAPATI			3	Daringibadi	0.0	6	Kuliana	0.0	2	Dhankauda	0.0
6	Remuna	0.0	1	Kasinagar	0.0	4	G.Udayagiri	0.0	7	Sarasakana	0.0	3	Rengali	0.0
7	Nilagiri	11.0	2	Paralakhemundi	0.0	5	Khajuripada	0.0	8	Sulipada	0.0	4	Maneswar	0.0
8	Soro	0.0	3	Rayagada	0.0	6	Kotagarh	0.0	9	Bangriposi	0.0	5	Kuchinda	0.0
9	Bahanaga	0.0	4	Gumma	0.0	7	Nuaagon	0.0	10	Baripada	0.0	6	Jamankira	0.0
10	Simulia	4.0	5	Nuagada	0.0	8	Phiringia	0.0	11	Khunta	0.0	7	Bamra	0.0
11	Khaira	0.0	6	R.Udaygiri	0.0	9	Phulbani	0.0	12	Gopabandhunagar	0.0	8	Rairakhol	0.0
12	Oupada	0.0	7	Mohana	0.0	10	Raikia	0.0	13	Udala	0.0	9	Naktideul	0.0
Avg 1.3			8	Gosani	0.0	11	Tikabali	0.0	14	Kaptipada	1.0	Avg 0.0		
3. BARGARH			Avg 0.0			12	Tumudibandh	0.0	15	Besoi	13.0	29. SUBARNAPUR		
1	Ambabhona	0.0	11. GANJAM			Avg 0.0			16	Bijatata	0.0	1	Sonepur	0.0
2	Attabira	0.0	1	Chhatrapur	1.8	17. KENDRAPARA			17	Rairangapur	0.0	2	Binika	0.0
3	Bargarh	0.0	2	Ganjam	0.0	1	Kendrapara	2.0	18	Kusumi	0.0	3	Tarbha	0.0
4	Barpali	0.0	3	Purusottampur	0.0	2	Derabis	4.5	19	Jamda	0.0	4	Dunguripali	0.0
5	Bhatli	0.0	4	Kabisuryanagar	0.0	3	Marshaghai	0.0	20	Bahalda	16.0	5	Birmaharajpur	0.0
6	Bheden	0.0	5	Polasara	12.0	4	Mohakalpara	0.0	21	Tiring	0.0	6	Ullunda	0.0
7	Bijepur	0.0	6	Kodala	5.0	5	Garadapur	0.0	22	Joshipur	0.0	Avg 0.0		
8	Gaisilet	0.0	7	Khalikot	0.0	6	Pattamundai	0.0	23	Karanja	0.0	30. SUNDARGARH		
9	Jharbandh	0.0	8	Hinjilicut	0.0	7	Aul	6.0	24	Thakurmunda	0.0	1	Hemgir	0.0
10	Padampur	0.0	9	Rangeilunda	0.0	8	Rajnagar	1.0	25	Sukuruli	7.6	2	Lephripura	0.0
11	Paikmal	0.0	10	Kukudakhandi	0.0	9	Rajkanika	0.0	26	Raruana	9.0	3	Tangarpali	0.0
12	Sohela	0.0	11	Chikiti	0.0	Avg 1.50			Avg 1.8			4	Sundargarh	0.0
Avg 0.0			12	Patrapur	0.0	18. KEONJHAR			23. NAWARANGHPUR			5	Subdega	0.0
4. BHADRAK			13	Sanakhemundi	0.0	1	Keonjhar	0.0	1	Nawarangpur	0.0	6	Balisankara	0.0
1	Bhadrak	10.0	14	Digapahandi	0.0	2	Banspal	0.0	2	Nandahandi	0.0	7	Bargaon	0.0
2	Bhandaripokhari	0.0	15	Bhanjanagar	14.0	3	Telkoi	6.4	3	Tentulikhunti	0.0	8	Kutra	0.0
3	Basudevppur	7.0	16	Belaguntha	6.0	4	Patna	0.0	4	Papadahandi	0.0	9	Rajgangpur	0.0
4	Bonth	0.0	17	Jagannathprasad	9.6	5	Saharpada	3.4	5	Kosagumuda	0.0	10	Kuarmunda	0.0
5	Chandbali	0.0	18	Buguda	73.0	6	Ghatgaon	0.0	6	Dabugaon	0.0	11	Nuagaon	0.0
6	Dhamnagar	0.0	19	Aska	0.0	7	Harichandanpur	0.0	7	Umerkote	17.2	12	Bisra	0.0
7	Tihidi	22.0	20	Dharakote	0.0	8	Anandapur	0.0	8	Raighar	0.0	13	Lathikata	0.0
Avg 5.6			21	Sheragada	0.0	9	Ghasipura	0.0	9	Jharigaon	1.0	14	Bonai	0.0
5. BALANGIR			22	Sorada	0.0	10	Hatadihi	1.2	10	Chandahandi	0.0	15	Lahunipara	0.0
1	Balangir	0.0	Avg 5.5			11	Champua	0.0	Avg 1.8			16	Gurundia	0.0
2	Puintala	0.0	12. JAGATSINGHPUR			12	Joda	0.0	24. NAYAGARH			17	Koira	0.0
3	Gudvella	0.0	1	Jagatsinghpur	0.0	13	Jhumpura	0.0	1	Bhapur	0.0	Avg 0.0		
4	Duduka	0.0	2	Biridi	0.0	Avg 0.8			2	Daspalla	0.0	19. KHORDHA		
5	Deogaon	0.0	3	Raghunathpur	0.0	1	Balianta	0.0	3	Gania	9.0	1	Baliapatna	0.0
6	Loisingha	0.0	4	Balikuda	0.0	2	Balipatna	0.0	4	Khandapara	0.0	2	Bhubaneswar	0.0
7	Patnagarh	0.0	5	Naugaon	0.0	3	Bhuaneswar	0.0	5	Nayagarh	0.0	3	Jatani	4.0
8	Belpada	0.0	6	Tirtol	0.0	4	Jatani	4.0	6	Nuagaon	0.0	4	Banapur	45.0
9	Khaprakhol	0.0	7	Kujanga	0.0	5	Banapur	45.0	7	Odagaon	0.0	5	Begunia	20.0
10	Titilagarh	0.0	8	Erasama	0.0	6	Bolagarh	0.0	8	Ranpur	39.2	6	Chilika	13.0
11	Tureikela	0.0	Avg 0.0			7	Chilika	13.0	Avg 6.0			7	Khordha	15.0
12	Bangomunda	0.0	13. JAJPUR			8	Khordha	15.0	25. NUAPADA			8	Tangi	14.0
13	Muribahal	0.0	1	Jajpur	10.0	9	Tangi	14.0	1	Boden	0.5	Avg 0.1		
14	Saintala	0.0	2	Binjharpur	0.0	Avg 11.1			2	Khariar	0.0	26. PURI		
Avg 0.0			3	Dasarathpur	0.0	20. KORAPUT			3	Komna	0.0	1	Astarang	0.0
6. BOUDH			4	Korei	0.0	1	Koraput	0.0	4	Nuapada	0.0	2	Brahmagiri	0.0
1	Boudh	0.0	5	Danagadi	0.0	2	Lamataput	0.0	5	Sinapali	0.0	3	Delang	0.0
2	Kantamal	0.0	6	Sukinda	0.0	3	Pottangi	0.0	Avg 0.1			4	Gop	0.0
3	Harabhanga	0.0	7	Rasulpur	0.0	4	Bandhugaon	0.0	26. PURI			5	Kakatpur	0.0
Avg 0.0			8	Dharmasala	0.0	5	Nandapur	0.0	6	Kanas	8.0	6	Brahmagiri	0.0
7. CUTTACK			9	Badachana	4.0	6	Dasmantpur	0.0	7	Krushnaprasad	0.0	7	Delang	0.0
1	Athagarh	12.0	10	Bari	10.1	7	Narayanpatna	0.0	8	Nimapara	0.0	8	Gop	0.0
2	Banki-Dampada	0.0	Avg 2.4			8	Laxmipur	0.0	9	Pipili	8.0	9	Kakatpur	0.0
3	Barang	0.0	14. JHARSUGUDA			9	Similiguda	0.0	10	Puri	0.0	10	Kanas	8.0
4	Badamba	8.0	1	Jharsuguda	0.0	10	Jeypore	0.0	11	Satyabadi	2.0	11	Krushnaprasad	0.0
5	Cuttack Sadar	0.0	2	Kolabira	0.0	11	Kotpad	0.0	Avg 1.6			12	Nimapara	0.0
6	Kantapada	0.0	3	Laikera	20.1	12	Kundra	0.0	26. PURI			13	Pipili	8.0
7	Mahanga	11.0	4	Kirmira	5.3	13	Borigumma	0.0	Avg 0.0			14	Satyabadi	2.0
8	Niali	0.0	5	Lakhanpur	0.0	14	Boipariguda	0.0	Avg 0.0			26. PURI		
9	Nischintakoili	6.0	Avg 5.1			15. KALAHANDI			Avg 0.0			Avg 0.0		
10	Narasinghpur	0.0	15. KALAHANDI			1	Bhabanipatna	0.0	Avg 0.0			Avg 0.0		
11	Salepur	0.0	1	Bhabanipatna	0.0	2	Kesinga	0.0	Avg 0.0			Avg 0.0		
12	Tangi-Choudwar	19.0	2	Kesinga	0.0	3	Karlamunda	0.0	Avg 0.0			Avg 0.0		
13	Tigiria	8.0	3	Karlamunda	0.0	Avg 0.0			Avg 0.0			Avg 0.0		
Avg 4.9			Avg 0.0			Avg 0.0			Avg 0.0			Avg 0.0		

Source:-SRC,Bhubaneswar